


# ELEMENTAL



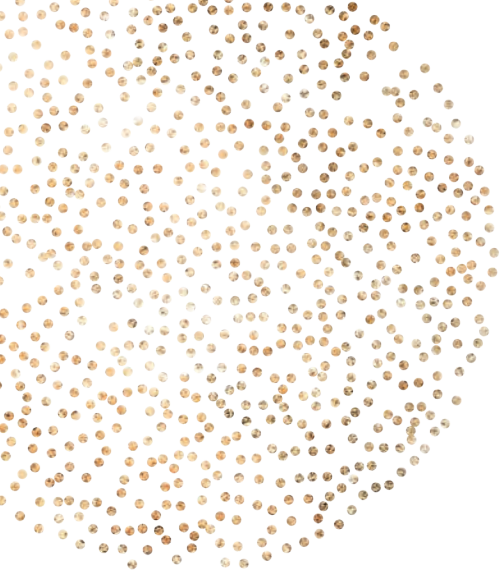
THINK  
BRICK  
AWARDS  
2021





The theme for this year's Think Brick Awards 'Elemental' is informed by a visual exploration of the four elements Earth, Air, Fire & Water and how they contribute to, relate and interact with the built form. A natural progression from the theme of 2020 'Down to Earth' where the soft material of earth is fired to become solid & strong building materials.





**“Architecture starts when you carefully put two bricks together.  
There it begins”.**

LUDWIG MIES VAN DER ROHE



in association with



**THINK  
BRICK  
AWARDS  
2021**



# THINK BRICK AWARDS 2021

CEO WELCOME	3
2021 JURY	4
HORBURY HUNT COMMERCIAL AWARD	6
HORBURY HUNT RESIDENTIAL AWARD	22
BRUCE MACKENZIE LANDSCAPE AWARD	38
KEVIN BORLAND MASONRY AWARD	48
ROBIN DODS ROOF TILE EXCELLENCE AWARD	60
NEW ENTRANT AWARD	72
MEMBERS	74





*"I really want to acknowledge the effort that goes into these projects. It's impressive and impactful, and without your support our awards wouldn't be possible."*

## ELIZABETH MCINTYRE

GROUP CEO, THINK BRICK AUSTRALIA,  
CONCRETE MASONRY ASSOCIATION OF AUSTRALIA  
& AUSTRALIAN ROOFING TILE ASSOCIATION

The theme for this year's Think Brick Awards '*Elemental*' was informed by a visual exploration of the four elements Earth, Air, Fire & Water and how they contribute to, relate and interact with the built form.

In our 17<sup>th</sup> Annual Think Brick Awards we continue to recognise and champion the ever-important contribution that architects, manufacturers, builders and bricklayers make in bringing outstanding built projects to life.

As I write this, over half of Australia is in lockdown and for all of us we are still feeling the impacts of COVID-19 in different forms. Despite this, the architectural community endures, embodying this year's '*Elemental*' theme.

Over 200 amazing projects are showcased as 2021 Award entries. This represents hours of creativity, project management, and craftsmanship, and of course, millions of bricks, blocks, pavers, and roof tiles.

I really want to acknowledge the effort that goes into these projects. It's impressive and impactful, and without your support our awards wouldn't be possible.

The awards continued to respond to the current environment and this year we announced a shortlist of the Top 40 Think Brick Awards projects on our Instagram channel over 4 weeks, building excitement and anticipation before the reveal of this year's Winners and High Commendations.

2021 has shown us, things continue to change, but some things never do. I think we can all agree that bricks, blocks, pavers and roof tiles stand the test of time.

Stay Safe. +





## ELIZABETH MCINTYRE

**THINK BRICK AUSTRALIA, CONCRETE MASONRY  
ASSOCIATION OF AUSTRALIA & AUSTRALIAN  
ROOFING TILE ASSOCIATION**

Elizabeth McIntyre has more than twenty years of experience in governance, brand development, marketing and organisational change.

Prior to joining Think Brick, Elizabeth held marketing director positions with Walt Disney Television, the Australian Jockey Club and Sports and Entertainment Limited. Elizabeth played a key role in evolving Ford's V8 Supercar program to convert sponsorship to sales of Ford performance vehicles. She has worked with Australian and international sport and theatre talent and was responsible for launching the High School Musical franchise and its then-unknown stars in Australia.

Elizabeth is a graduate member of the Australian Institute of Company Directors and a Board Member of the Building Products Innovation Council, Cyclone Testing Station, Australia. She holds a Bachelor of Business from the University of Technology Sydney, a Masters in International Business from Macquarie University and has most recently completed senior leadership courses at Harvard Business School. +



## KOICHI TAKADA KOICHI TAKADA ARCHITECTS

Koichi Takada is the founder of Koichi Takada Architects, based in Sydney, Australia. Born in Hong Kong to Japanese parents, Takada lived in Singapore before moving to Tokyo, where he lived and studied for over a decade. After experiencing Eastern culture from within, his interest in the built environment led him to the West. He studied at City University of New York, before obtaining his degree in architecture from the Architectural Association in London.

Upon graduation Takada moved to Tokyo where he worked for Atsushi Kitagawara Architects, then New York for one year at Sweeny Walter Associates. In 2008 Takada moved to Sydney, where he honed his emphasis on a connection to nature and humanising the urban environment during three years as associate director of PTW Architects. After living in several cities of high urbanisation, Takada pledged to create a greener future through design and founded his own practice in 2008. Since then he has transformed the skylines of Australia, Japan, China, Qatar, Mexico, and the USA with an approach that emphasises sustainability and a connection to nature in our cities.

As an awarded architect with a global reputation for innovative work that speaks to local landscapes and cultures, Takada is a leader in the future of design as a positive force for people and the planet. +



## AMY MUIR MUIR ARCHITECTURE

Amy Muir is the director of MUIR Architecture. The practice engages with a range of projects including those for public and institutional briefs bringing a sympathetic and strategic attitude to the varying contexts that they work within. The practice is underpinned by a firm belief in unsolicited and project-based research and investigations into the role of the civic. By investing public work with the language of memory and place, MUIR hope to speculate on a new civic architecture.

Having completed degrees in both Architecture and Interior Design from RMIT University, Amy has ensured that the practice places equal value on the holistic crafting of interior and external form as one. She is committed to supporting the education of young architects and has guest lectured at various universities and is a current Lecturer at RMIT University.

In her current role as Victorian President of the Australian Institute of Architects, Amy regularly liaises with state and local government agencies advocating, reviewing and establishing design leadership and policy development through collaboration. +





## MICHAEL WHITE FREADMAN WHITE

Michael is a founding director of Freadman White, a multi-award-winning studio, based in Melbourne. The firm is no stranger to the Think Brick Awards, winning the Kevin Borland Masonry Awards twice in 2016 and 2020.

Freadman White seeks to embed a curiosity-driven and experientially charged tension into their architectural work, reveal beauty in simple and overlooked settings, and strive to create visually intriguing and emotionally resonant spaces.

Believing architecture's mandate to be making positive contributions to individual lives and the wider urban plan, Freadman White designs contextually informed structures with disciplined whimsy. Rather than responding literally to physical surrounds, Freadman White pursue sensorial and textural moments that are informed by memories of place and the achievements of modern architecture. +



## GEOFF WARN WITH \_ ARCHITECTURE STUDIO

Geoff is a highly respected practitioner and founder of With\_ Architecture Studio, an multi award-winning design practice.

He was appointed WA Government Architect in 2013 and concluded his extended term in 2020. In this role he provided leadership and independent strategic advice to government to improve the design of public buildings and spaces, and enhance the quality of the built environment, which included several high-profile projects that includes Perth Stadium, the WA Museum, Elizabeth Quay, MetroNet, and the release of the Apartment Design Policy as part of Design WA, a major planning reform initiative.

Geoff was Professor of Architecture at Curtin University, a position he held for 5 years. He has served on many advisory and review panels and has been a guest presenter, tutor or juror at architecture schools in Melbourne, Sydney, Brisbane, San Francisco, Buenos Aires, Madrid and Berlin. On two occasions the practice's work has been included in the Venice Biennale of Architecture. He was an Honorary Research Fellow at the University of Western Australia and Adjunct Professor to the School of Fine Arts at Curtin University. Geoff is a architecture graduate of Curtin University (formerly WAIT), has a Masters of Architecture from RMIT, plus a degree in Comparative Literature from Murdoch University. +



## JANE IRWIN JANE IRWIN LANDSCAPE ARCHITECTURE (JILA)

Jane Irwin is recognized as a leader in the field of Landscape Architecture in NSW. Jane takes a vital interest in the public domain, and participates in competitions and urban design programs that foster innovative thinking about its structure and future.

Her design practice - Jane Irwin Landscape Architecture (JILA) has a distinguished portfolio of projects that have been recognized through state and national awards. With work ranging from garden courtyards to city making, the practice has great enthusiasm for the possibilities of urban design. The small, multidisciplinary team at JILA has cultivated an informed and specific design language that speaks to the authenticity of place and its rich cultural associations.

Jane is a Fellow of the Australian Institute of Landscape Architects, past President of the state chapter, and former member of the Heritage Council of NSW. She sits on Design Advisory and review panels for National Capital Design Review Panel and The Hills Shire Council. +



THIS AWARD WAS INITIATED  
BY THE HORBURY HUNT CLUB  
AND BY REQUEST FROM  
ARCHITECTS AND DESIGNERS

The award's purpose is to honour innovation and craftsmanship in brickwork and to recognise the contribution of architects, builders, bricklayers and manufacturers in that process.

The Horbury Hunt Commercial Award category includes built projects that exemplify outstanding craftsmanship and innovation through the use of clay face brick and pavers. The award is named after John Horbury Hunt (1838–1904), a renowned architect who came to Australia from America in 1863. Hunt was known for introducing his distinctive and radical architecture to Sydney and rural New South Wales, including St Peter's Anglican Cathedral in Armidale, and Convent of the Sacred Heart and Tivoli in Rose Bay. +



THINK BRICK AUSTRALIA represents Australia's clay brick and paver manufacturers.

Think Brick's purpose is to ensure clay brick is recognised as a pre-eminent building material by leading architects, developers, builders and property owners. We are committed to promoting exemplary building and landscape design using clay bricks and pavers.

We create national campaigns to inspire designers, builders and consumers to use clay brick as a contemporary, versatile and inspiring building material.



Geelong College Junior School  
John Wardle Architects  
Photographer: Katya Menshikova





## SMART DESIGN STUDIO

### SMART DESIGN STUDIO

This new architectural studio is innovative, sustainable and sculptural. Its new and renovated facades sit harmoniously with the brick warehouses of the inner-city conservation.

The design embraces the essence of the industrial precinct, seen in the composition of the facade and the choice of materials. Structural brick vaults and spindly steel structures exemplify the innovation and economy of industrial buildings. Naturally lit and ventilated, the studio collects its own water and generates its own power, making the building carbon neutral.

The new studio retains most of the existing warehouse. Creativity and structural innovation are celebrated in the new components, built with materials that are similar to those of the original structure yet expressed and detailed in a contemporary way. The brick facade, with horizontal expression, peels back to create unexpectedly sculptural openings.

Above the new workspace is a caretaker's apartment, which runs the length of the building. It is made from four self-supporting brick catenary vaults, offset from each other to allow light into the apartment. There's no structure, apart from galvanised roof sheeting that runs over the unmortared bricks and a thin layer of concrete.

Built with durable materials, the new studio is planned to be home for the practice until at least 2050. +



TOP  
40





"This project is a masterclass in the use of brick. We fell in love with the meticulous and seamless detailing. The way the vertical curves create a very subtle canopy over the footpath allows the public to engage with the material and is a generous way of giving back to the public realm. It's bold, yet it displays subtle and structurally integral ways of using brick."

2021 JURY

Photographer: Romello Pereira



9

ELEMENTAL THINK BRICK AWARDS 2021

**MANUFACTURER**

Bowral Bricks, Austral Bricks

**BRICK COLLECTION**

Bowral Bricks: Chillingham White

Austral Bricks: La Paloma – Azul

**BUILDER /CONTRACTOR**

AJ Bristow & Sons



## FABRIC HOUSE

DURBACH BLOCK  
JAGGERS ARCHITECTS /  
SJB / TZG

This project is part of a Design Excellence collaboration for the first stage of Newcastle's East End development. Fabric House is one of three new mixed-use buildings on the site, located among retained heritage buildings and other building components.

Fabric House builds on the heritage brick facade of the former David Jones Food Hall. Designed in a 1930s modernist style but built in the mid-1960s, the existing facade is made of a blond brick with rounded corners, steel windows and streamlined relief elements in brick and render.

The new building extends directly upward off the existing facade in a way that both expresses and incorporates the heritage component of the building into the new whole. It is an additive approach rather than a clear demarcation.

The brickwork grades as it ascends, changing from the blond brick of the heritage facade to a deep blue/brown brick, referencing nearby heritage brick buildings. Windows and balconies read as a pattern of brick openings, referencing the solid-to-void ratio of the traditional brick warehouses that surround the site.

The building houses retail outlets on the ground floor, fronting both Wolfe Street and Lyrique Lane, as well as fifty-six apartments over ten levels, including four penthouses located behind the arches of the top floor. +

**HIGH  
COMMENDATION**  
**HORBURY HUNT  
COMMERCIAL  
AWARD 2021**

**TOP  
40**

Photographer: Tom Roe

### MANUFACTURER

Namoi Valley Bricks, PGH Brick & Pavers

### BRICK COLLECTION

Namoi Valley Bricks: Architectural Range

- Light Cream Face, Federation

Red & Federation Blue

PGH Brick & Pavers: Dry Pressed

Architectural Range - Tinto Cream,

Hawkesbury Bronze & Balmerino Blend

### BUILDER

Richard Crookes Construction

### CONTRACTOR

DJD Brick and Blocklaying



**HIGH  
COMMENDATION**

**HORBURY HUNT  
COMMERCIAL  
AWARD 2021**

## **BATHURST 60** **SMART DESIGN STUDIO**

Bathurst 60 accommodates 152 hotel rooms, ninety-five apartments and over a thousand square metres of function rooms and food and beverage facilities. The competition-winning scheme is Australia's tallest brick building, cleverly balancing the amenity of the accommodation offerings with the demands of the site.

The building has been elegantly moulded into four blocks, each one with different proportions. The lower portions align with the predominant street walls of Bathurst and Sussex Streets, and the upper portions step back to align with the other towers of Sydney's CBD. These boxes appear to hover above the steeply inclined streets, creating a highly activated two-storey space that accommodates two foyers, a bar, a restaurant and function rooms. The spaces between them allow light and air into the centre of the building.

The use of brick construction, rich in texture and humble in character, marries with the brick warehouses in the area, as well as the adjacent apartment buildings. Subtle details such as visible lintels, offset columns and deep-set chequerboard windows are a contemporary twist to an almost classical high-rise building. Rather than utilising brick slips or imitation brick, real bricks have been laid individually to create a Stripped Classical-style building with a sense of energy and movement on the façade. +

**TOP  
40**

**MANUFACTURER**

Bowral Bricks

**BRICK COLLECTION**

Simmental Silver

**BUILDER /CONTRACTOR**

Parkview



**HIGH  
COMMENDATION**  
**HORBURY HUNT  
COMMERCIAL  
AWARD 2021**

## GEELONG COLLEGE JUNIOR SCHOOL

JOHN WARDLE ARCHITECTS

The arrangement of the updated Geelong College Junior School resembles a miniature town plan. Squares, plazas and landscaped courtyards are sequenced in between the buildings.

The multipurpose room acts like a town hall, allowing the whole school to gather. Nearby, a stage is orientated to existing classroom pavilions, which have been transformed into music tuition and drama spaces. Together the buildings operate as a performing arts precinct.

The early learning centre is sequentially zoned, creating year-level communities. A central landscaped courtyard is shared between year levels. Four early learning spaces and twelve classrooms are grouped around shared spaces over two levels. The fanning zig-zag plan form brings southern light into the learning environments, and allows cross-ventilation and long views across the playing fields.

The exterior fabric resembles a "defensive" city wall. With shifting forms and colour in the brickwork, it provides playful protection from the traffic noise to the east and severe westerly winds. A set of deep windows punctuates the wall, its inside face made deep to contain shared equipment, art stores and resources.

The colours and textures of the bricks have been developed specifically for this project and reference the tones of the landscape. Subtle greens and greys camouflage with the native trees. The glaze colours tie in with the college colours as an emblematic motif knitted like a Fair Isle jumper. +

**MANUFACTURER**  
Krause Bricks  
**BRICK COLLECTION**  
Bespoke - Made to Order  
**BUILDER**  
Fairbrother  
**CONTRACTOR**  
Lawler Bricklaying

**TOP  
40**



**HIGH  
COMMENDATION**

**HORBURY HUNT  
COMMERCIAL  
AWARD 2021**

## FISH LANE TOWN SQUARE RICHARDS AND SPENCE

A once-derelict carpark on an inner-city service lane has been transformed into a new town square. Located underneath existing railway bridges in South Brisbane, the new and existing buildings are reconciled with brickwork. A closely matched selection of bricks, pavers and mortar unifies the public realm, with the materials continuing inside and out, extending from walls onto pavements. Shadows from the Queensland sun animate the carefully articulated brick facades throughout the day, activating the shady retreat under the bridges. With a long-term ambition, the design team's selection of brick anticipates the patina of time and the prospect for an enduring piece of urban infrastructure. +

**TOP  
40**

### MANUFACTURER

Bowral Bricks, Nubrik

### BRICK COLLECTION

Bowral Bricks: Capitol Red

Nubrik: Pavers - Custom Colour

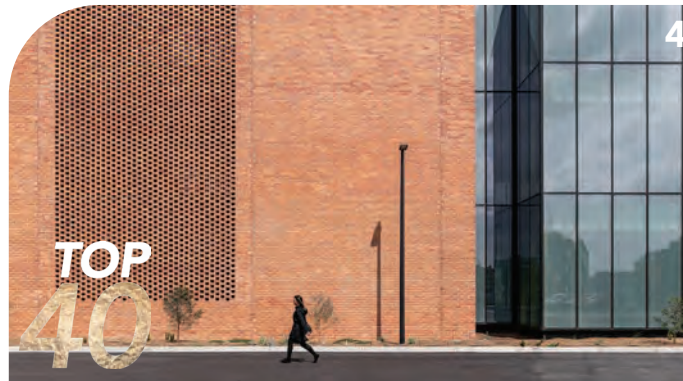
### BUILDER

Shape

### CONTRACTOR

SRC Bricklaying (Masonry)





### 1. TRINITY COLLEGE – INNOVATION AND CREATIVITY SCHOOL DETAIL STUDIO

B: Mossop Construction  
C: Caruso Construction  
M: Bowral Bricks  
P: Bowral Blue

### 2. JEWISH CARE, SENIOR LIVING PRECINCT CARNEGIE SMITH + TRACEY ARCHITECTS

B: ARC 3  
C: AJP Bricklaying  
M: Bowral Bricks  
P: Brahman Granite

### 3. WASHINGTON H. SOUL PATTINSON ENDRIM

B: FDC  
C: Nash Group  
M: Austral Bricks  
P: San Selmo Smoked - Grey Cashmere

### 4. BROADMEADOWS TOWN HALL KERSTIN THOMPSON ARCHITECTS

B: Building Engineering  
C: Lawler Bricklaying  
M: Krause Bricks  
P: Extruded Range - Heritage Red

### 5. MANLY EARLY LEARNING CENTRE MILTON ARCHITECTS

B: Lloyd Group  
C: Walsos  
M: Bowral Bricks  
P: Bowral Blue

### 6. BAPTIST CARE KITTY DOYLE APARTMENTS JACKSON TEECE

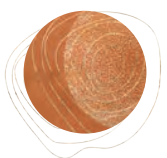
B: Lendlease  
C: Fugen Masonry Constructions  
M: PGH Bricks & Pavers  
P: Dry Pressed Architectural - Tinto Cream

### 7. THE WOOLSTORE AT KINGSBOROUGH DNA ARCHITECTS

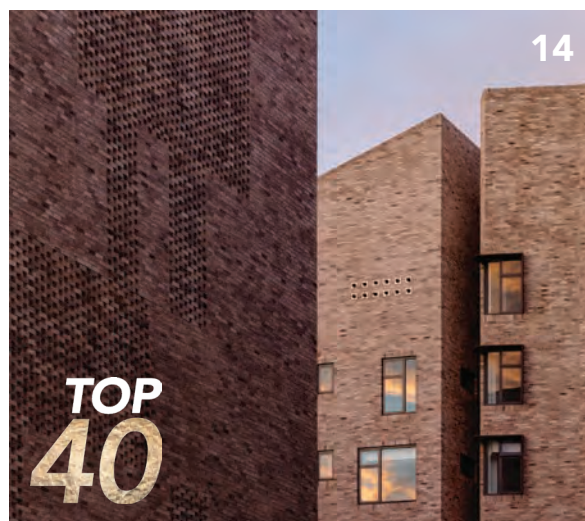
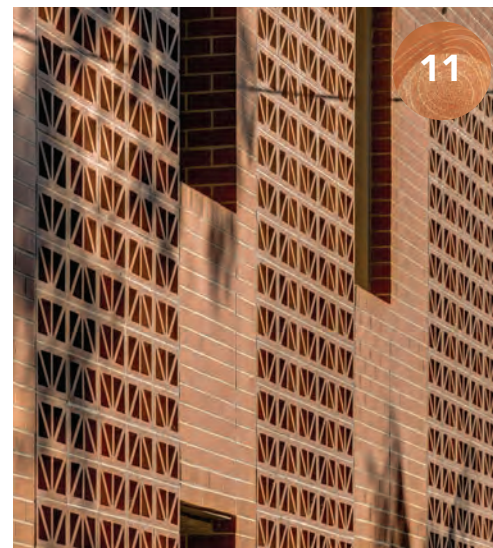
B: Construction Control  
C: CTR Pacific  
M: Recycled

### 8. TATE CERA STRIBLEY

B: COBEN  
C: Brick and Block Solutions & Day Bricklaying  
M: Lohas Australia  
P: Piera Eco Ceramica Roman Handmade Bricks - Crema - 280x136x50mm







**9. ESSENCE APARTMENTS**  
**HAMES SHARLEY**  
 B: BGC Construction  
 M: Brikmakers  
 P: Revival Brick Collection - Claremont Blend  
 (Treasury Red Tumbled, Bishops House Tumbled & Red Smooth Tumbled)

**10. MLC NICHOLAS LEARNING CENTRE**  
**MCILDOWIE PARTNERS ARCHITECTS**  
 B: McCorkell  
 C: Lawler Bricklaying

**11. TERACOTA**  
**A: BENNETT MURADA ARCHITECTS**  
 B: Cemento  
 C: AFM Masonry  
 M: Austral Bricks  
 P: Governors - Wakehurst

**12. MURRAY BRIDGE SOLDIERS' MEMORIAL HOSPITAL REDEVELOPMENT**  
**WILTSHIRE SWAIN ARCHITECTS**  
 B: Shape Australia  
 C: Trewstone  
 M: Bowral Bricks  
 P: Bowral Blue

**13. THE DUKE HOTEL**  
**ARCHEBIOSIS ARCHITECTS**  
 B: Sydney City Homes  
 M: PGH Bricks & Pavers  
 P: Morada Linear - Nero; Crafted Sandstocks - Recycled Mix

**14. ROSEBERY OVERLAND GARDENS**  
**BVN**  
 B: Toplace  
 C: BW Brick & Block  
 M: Austral Bricks  
 P: San Selmo Smoked - Cloudy Silver, Grey Cashmere & Opaque Slate

**15. STEP UP STEP DOWN BUNBURY**  
**SPH ARCHITECTURE + INTERIORS**  
 B & C: BGC Construction  
 M: Brikmakers  
 P: Revival Brick Collection - Bishops House Tumbled; Traditional Collection - Nouveau Grey

**16. SALESIAN COLLEGE CHADSTONE, FR EDWARD COOPER BUILDING & FR WALLACE CORNELL BUILDING**  
**WILLIAMS ROSS ARCHITECTS**  
 B: Harris HMC  
 C: McGaw Constructions  
 M: Bowral Bricks, Austral Bricks  
 P: Bowral Bricks: Chillingham White & Simmental Silver  
 Austral Bricks: Industrial - Char





17



18



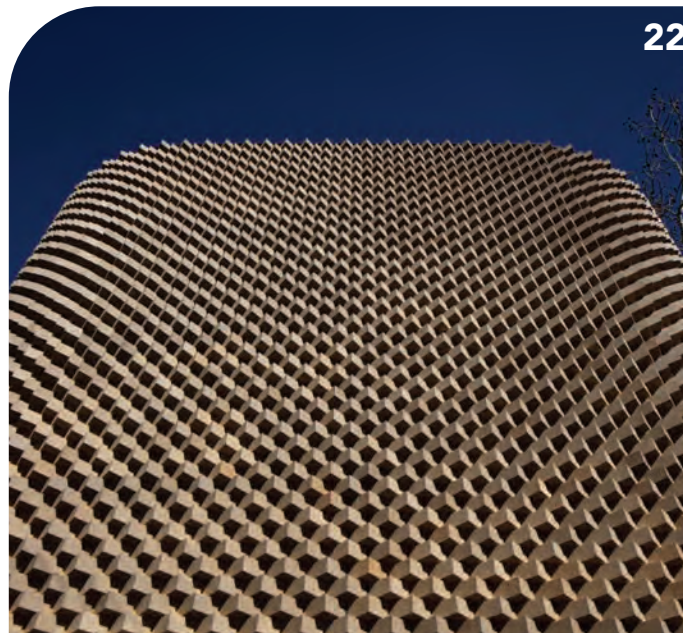
19



20

TOP  
40

21



22



23



24

### 17. KURRAJONG CENTRE FOR SENIOR LEARNING - THE SPRINGFIELD ANGLICAN COLLEGE

FULTON TROTTER ARCHITECTS

B: Condev Construction  
C: ABC Bricklaying  
M: Bowral Bricks  
P: Simmental Silver

### 18. STONEY RISE CELLAR DOOR CUMULUS STUDIO

B: Eustace Builders  
C: Vanderlaude Bricklayers  
M: Daniel Robertson, Bowral Bricks  
P: Daniel Robertson: Hawthorn - London  
Bowral Bricks - Bowral Blue

### 19. CURL CURL NORTH PUBLIC SCHOOL TKD ARCHITECTS

B: ADCO  
C: Plumb and Level Masonry  
M: PGH Bricks & Pavers  
P: Composite - Aluminium; Coastal Hamptons - Crevole; Alfresco - Truffle & Espresso

### 20. JUDITH NEILSON INSTITUTE FOR JOURNALISM AND IDEAS TZANNES

B: Infinity Constructions  
C: Eastside Bricklaying  
M: Austral Bricks  
P: San Selmo Corso - Livenza (Raw); Custom Sized Burlesque - Indulgent White

### 21. FOAMCREST APARTMENTS RICHARD COLE ARCHITECTURE

B: PVD No2  
C: Betacon Bricklaying

### 22. RIDGE STREET TZANNES

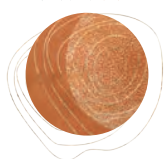
B: Grater Constructions  
C: NDG Bricklaying  
M: PGH Bricks & Pavers  
P: Dry Pressed Architectural - Silver Shadow

### 23. SCHOFIELDS PUBLIC SCHOOL TKD ARCHITECTS

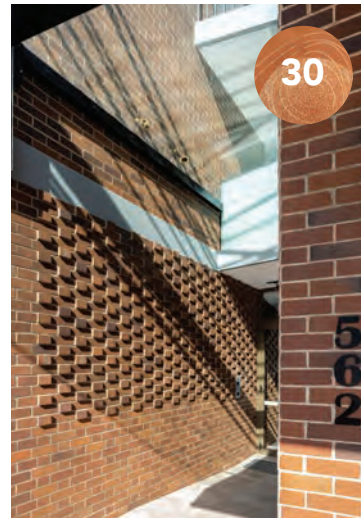
B: ADCO  
C: Conrina Masonry  
M: PGH Bricks & Pavers  
P: Coastal Hamptons - Crevole; Seascape - Sea Salt; Vibrant - Tango & Watermelon.

### 24. ST JOSEPH'S PRIMARY SCHOOL, COBRAM B3ARCHITECTS

B: Dezin  
C: Sam Macdonald Bricklaying  
M: Nubrik  
P: Traditional - Chapel Red







**25. GOODNA STATE SPECIAL SCHOOL**  
**KO&COARCHITECTURE**

B: Wiley  
C: Brizmasonry  
M: PGH Bricks & Pavers, Austral Bricks  
P: PGH Bricks & Pavers: Dry Pressed Architectural - Macarthur Mix; Vibrant - Tango, Wasabi & Paris  
Austral Bricks: Camilla - Azure

**26. GAYNES PARK SUITES BY LIFE CARE**  
**MARCHESE PARTNERS INTERNATIONAL, ADELAIDE**

B: Mossop Construction + Interiors  
C: Caruso Bricklaying  
M: Bowral Bricks  
P: Simmental Silver

**27. KINGS LANGLEY CRICKET CLUB AND AMENITIES**  
**EOGHAN LEWIS ARCHITECTS**

B: Dezin  
C: Paragon Group  
M: Bowral Bricks  
P: Simmental Silver

**28. GOULBURN STREET HOUSING**  
**CUMULUS STUDIO**

B: Fairbrother Construction  
C: All Brick Tasmania  
M: Daniel Robertson, Austral Bricks  
P: Daniel Robertson: Hawthorn - Red  
Austral Bricks: San Selmo Smoked - Cloudy Silver

**29. HOTEL VERGE**  
**CUMULUS STUDIO**

B: Fairbrother Construction  
C: All Brick Tasmania  
M: Daniel Robertson  
P: Hawthorn - Mixed

**30. THE BOWERY WILLOUGHBY**  
**AJH+**

B & C: JD Projects Group  
M: Bowral Bricks  
P: Bowral Blue, Gertrudis Brown & Showthorn Mix

**31. ECHUCA TWIN RIVERS SCHOOL**  
**KNEELER DESIGN ARCHITECTS**

B: Fairbrother  
C: AJP Group  
M: Bowral Bricks, Austral Bricks  
P: Bowral Bricks: Bowral Blue  
Austral Bricks: La Paloma - Miro

**32. THE ABBEY CRONULLA**  
**AJH+**

B & C: Traders In Purple  
M: Bowral Bricks  
P: Renovation Gertrudis Brown

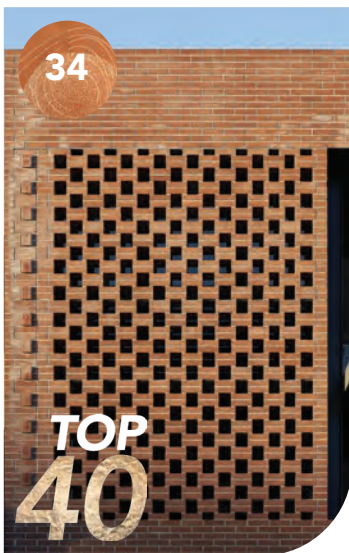




33



38

TOP  
40

34

TOP  
40

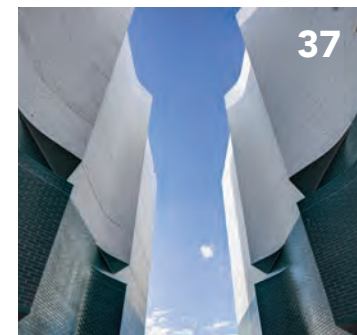
35



39



36



37



40

TOP  
40

### 33. MEALS ON WHEELS SA HEAD OFFICE

#### JPE DESIGN STUDIO

B & C: Kennett Builders  
M: PGH Bricks & Pavers  
P: Smooth - Copper Glow & Black and Tan

### 34. GEORGE STREET MJA STUDIO

B: BAUEN Projects  
C: Tyrone Group  
M: Bowral Bricks  
P: Capitol Red

### 35. MAITLAND REGIONAL ATHLETICS COMPLEX STUDIO DOT / MAITLAND CITY COUNCIL

B: Graph Building  
C: Russell Bricklaying  
M: PGH Bricks & Pavers  
P: Dry Pressed Architectural - Hawkesbury Bronze & Black Beauty

### 36. NEWCASTLE VISITOR INFORMATION CENTRE EJE ARCHITECTURE

B: North Construction & Building, Kingston  
C: DigX / Period Home Brick Restoration & Construction  
M: Recycled

### 37. LUME SJB

B: The Doma Group  
C: BLOC  
M: Austral Bricks  
P: Burlesque - Custom (Newcastle Green); Symmetry - Terracotta; Commons

### 38. THE LOTHIAN KENNEDY NOLAN

B: Bear Projects  
C: Masters of Masonry  
M: Krause Bricks  
P: Pressed Brick Range - Old Red

### 39. SPRINGVALE COMMUNITY HUB LYONS / RUSH WRIGHT ASSOCIATES

B: Ireland Brown Constructions  
C: Brickit / Melbourne Paving  
M: Bowral Bricks  
P: Capitol Red

### 40. FINTONA GIRLS' SCHOOL - ANNIE HUGHSTON CENTRE LYONS

B: McCorkell Constructions  
C: Lawler Bricklaying  
M: Krause Bricks  
P: Pressed Brick - Grampian Blue







**41. IRVING ST**  
**B.E ARCHITECTURE**  
 B: Flux by Figurehead  
 C: McPherson Bricklaying  
 M: Brikmakers  
 P: Lloyd Wright Brick Collection - Mississippi Cream

**42. ASHBURTON SENIORS COMMUNITY FACILITY**  
**DS ARCHITECTS**  
 B: Harris HMC  
 C: Masters of Masonry  
 M: Austral Bricks  
 P: Melbourne - Black Rock



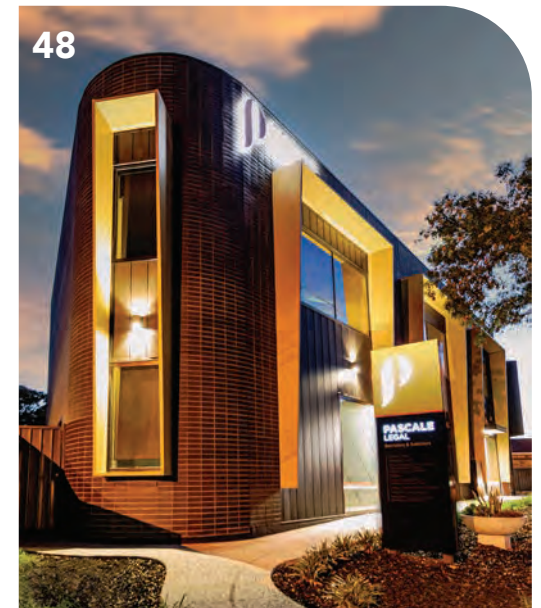
**43. PAGJON**  
**RODRIGUES BODYCOAT ARCHITECTS**  
 B: Pirone Builders  
 C: Premici Bricklaying / Pirone Builders  
 M: Geraldton Brick  
 P: Face Brick Range - Governor Sterling

**44. PRINCES HIGHWAY**  
**ANTONIADES ARCHITECTS**  
 B: Infinity Construction  
 C: S&P Bricklaying  
 M: PGH Bricks & Pavers  
 P: Dry Pressed Architectural - Macarthur Mix



**45. LIVINGSTON ESTATE SPORTS PAVILION**  
**CITY OF CASEY / PROGRAMMED FACILITIES MANAGEMENT**  
 B: 2Construct  
 C: Masters of Masonry  
 M: PGH Bricks & Pavers  
 P: Pure Linens - Cinders & Soot; Pure Velvets - Crushed Grey

**46. SOMERVILLE PARK SPORTS PAVILION**  
**SAM CRAWFORD ARCHITECTS**  
 B: 2020 Projects  
 C: Milidone Masonry  
 M: Bowral Bricks  
 P: Chillingham White



**47. BOTANY ROAD, ZETLAND**  
**CANDELEPAS AND ASSOCIATES**  
 B: Waterside Construction  
 C: Able Bricklaying  
 M: Bowral Bricks  
 P: St Pauls Cream

**48. PASCALE LEGAL**  
**CUBE ARCHITECTS**  
 B: Horizon Construction Services  
 C: Total Brickwork Solutions  
 M: PGH Bricks & Pavers  
 P: Morada - Nero





#### 49. DARLINGHURST ROAD SJB

B: Trescon  
C: No Worries Bricklaying, J & O Bricklaying  
M: Bowral Bricks, Austral Bricks  
P: Bowral Bricks: Murray Grey  
Austral Bricks: London - Regency Grey

#### 50. HMLET HARRIS PARK CD ARCHITECTS

B: Hiban Group  
C: Total Bricklaying Constructions  
M: Austral Bricks  
P: Ultra Smooth - Jazz & Tempo

#### 51. KILORA RESERVE SPORTS PAVILION CITY OF CASEY / PROGRAMMED FACILITIES MANAGEMENT

B: 2Construct  
C: Masters of Masonry  
M: PGH Bricks & Pavers  
P: Velour - Flame Red; Pure Linens  
- Whispering White

#### 52. THE ALBANY, CROWS NEST NETTLETONTRIBE

B: Paynter Dixon  
C: JB Masonry  
M: Austral Bricks  
P: La Paloma - Miro

#### 53. OCEANS, FRESHWATER NETTLETONTRIBE

B: Gledhill Constructions  
C: Betacon Bricklaying  
M: Bowral Bricks, PGH Bricks & Pavers  
P: Bowral Bricks: Chillingham White  
PGH Bricks & Pavers: Morada - Blanco

#### 54. BOWRAL AND DISTRICT HOSPITAL CONRAD GARGETT

B: ADCO Constructions  
C: Macarthur Bricklaying Services  
M: Bowral Bricks  
P: Bowral Brown

#### 55. CRANBOURNE WEST COMMUNITY HUB CITY OF CASEY / PROGRAMMED FACILITIES MANAGEMENT

B: Lloyd Group  
C: Spidden Bricklaying  
M: Recycled

#### 56. BLUE GUM PRESCHOOL EXTENSION PAUL BARNETT DESIGN GROUP

B: Monarch Building Solutions  
C: Keith Woodward Bricklaying  
M: Bowral Bricks  
P: Bowral Blue







57



58



59



60



61



62



63



64



65

**57. BLACKFRIARS PRIORY SCHOOL  
AQUINAS CENTRE  
SWANBURY PENGLASE ARCHITECTS**

B: Partek Construction & Interiors  
C: Ranieri Bricklaying  
M: Bowral Bricks  
P: Getrudis Brown & Bowral Blue

**58. WESTMINSTER SCHOOL INQUIRY  
AND INNOVATION HUB  
BROWN FALCONER / HAYBALL  
ARCHITECTS**

B: SARAH Constructions  
C: Ranieri Bricklaying  
M: PGH Bricks & Pavers  
P: Smooth - Copper Glow & Black and Tan

**59. ST MARY'S COLLEGE AUDITORIUM  
ASPECT ARCHITECTURE & PROJECT  
MANAGERS**

B: FKQ  
C: Southern Cross Bricklaying  
M: Austral Bricks  
P: Everyday Life - Stimulate;  
Hamptons - Whitehaven; Burlesque -  
Indulgent White, Smashing Blue & Siena

**60. KALYRA WOODCROFT  
WALTER BROOKE AND ASSOCIATES**

B: Kennett  
C: LJP Masonry  
M: Austral Bricks  
P: La Paloma - Dali

**61. FRASER RISE CHILDREN'S &  
COMMUNITY HUB  
BRAND ARCHITECTS**

B: Melcon  
C: Diamond Valley Bricklaying

**62. LUMINA  
DKO ARCHITECTURE**

B: Urban Property Group  
C: Plumb and Level Masonry  
M: Austral Bricks  
P: San Selmo Reclaimed -  
Reclaimed Original

**63. THE HENRY  
DKO ARCHITECTURE**

B: Urban Property Group  
C: Plumb and Level Masonry  
M: Austral Bricks  
P: San Selmo Smoked - Grey Cashmere

**64. KORAYN BIRRALEE FAMILY CENTRE  
BRAND ARCHITECTS**

B: Nicholson Construction  
C: Reid Bricklaying  
M: PGH Bricks & Pavers, Adbri Masonry  
P: PGH Bricks & Pavers: Dry Pressed  
Architectural - Mowbray Blue  
Adbri Masonry: Architectural Masonry -  
Architectural Brick

**65. FIR STREET  
THINK ARCHITECTS**

B: Grange Homes  
C: A-One Bricklaying  
M: PGH Bricks & Pavers  
P: Manhattan - Tribeca



THIS AWARD WAS INITIATED BY  
THE HORBURY HUNT CLUB AND  
BY REQUEST FROM ARCHITECTS  
AND DESIGNERS

The award's purpose is to honour innovation and craftsmanship in brickwork and to recognise the contribution of architects, builders, bricklayers and manufacturers in that process.

The Horbury Hunt Residential Award category includes built residential projects that exemplify outstanding craftsmanship and innovation through the use of clay face brick and pavers. The award is named after John Horbury Hunt (1838–1904), a renowned architect who came to Australia from America in 1863. Hunt was known for introducing his distinctive and radical architecture to Sydney and rural New South Wales, including St Peter's Anglican Cathedral in Armidale, and Convent of the Sacred Heart and Tivoli in Rose Bay. +



THINK BRICK AUSTRALIA represents Australia's clay brick and paver manufacturers.

Think Brick's purpose is to ensure clay brick is recognised as a pre-eminent building material by leading architects, developers, builders and property owners. We are committed to promoting exemplary building and landscape design using clay bricks and pavers.

We create national campaigns to inspire designers, builders and consumers to use clay brick as a contemporary, versatile and inspiring building material.



Nightsky  
Peter Stutchbury Architecture  
Photographer: Michael Nicholson

2 3

EMENTAL THINK BRICK AWARDS 2021



## DIVIDED HOUSE

JACKSON CLEMENTS BURROWS

Divided House captures an opportunity to embrace cultural, social and environmental sustainability commitments, and endeavours to enrich the heritage place through personal interpretation. The making of the home has contributed to the community through artistic engagement and reinforces the importance of neighbourly interaction through the strategic location of the living spaces and communal seating at the streetscape interface.

The house is divided into two brick building forms located at the front and rear of the site, linked by a single-storey "lean-to" referencing the outhouse laundry and lean-to that existed on the site prior to their demolition.

The Krause Bricks Emperor brick is celebrated across the building through considered detailing and craftsmanship. The unique Emperor brick module is utilised both externally and internally, in the form of textured brick walls, fences, floor thresholds, pathways and an external fireplace/chimney. A unique staggered brick bond conceived for the project is utilised to mediate angled and squared walls, articulating and complementing the architectural form. The unique and varied brick colour defines the neutral palette and architectural presence of the building, and references the polychrome brickwork of the neighbouring heritage buildings. +

### MANUFACTURER

Krause Bricks

### BRICK COLLECTION

Emperor 380mm – Grey

### BUILDER

BD Projects

### CONTRACTOR

Greg Saunders

WINNER

HORBURY HUNT  
RESIDENTIAL  
AWARD 2021

TOP  
40





**“Divided House really takes the brick and challenges it – it doesn’t accept it for what it is. This project displays lovely innovation in the way that the facade is defined and articulated. There’s also a sense of joy in the way that the skinniness of the chimney is articulated within the garden and the manner in which all those elements start to play into a bigger language and a larger way of understanding how the house operates.”**

**2021 JURY**



Photographer: John Gollings



## BEAONSFIELD HOUSE

SIMON PENDAL ARCHITECT

At Beaconsfield House, an existing 1947 worker's cottage has been given new life and extended. The original cottage was stripped-back to its timber frame, jarrah floor and front verandah. Only subtle changes in plan were made to the cottage so that its integrity was maintained. It has been treated on its merits as thin, modest and direct – there is beauty in the cottage's basic quality.

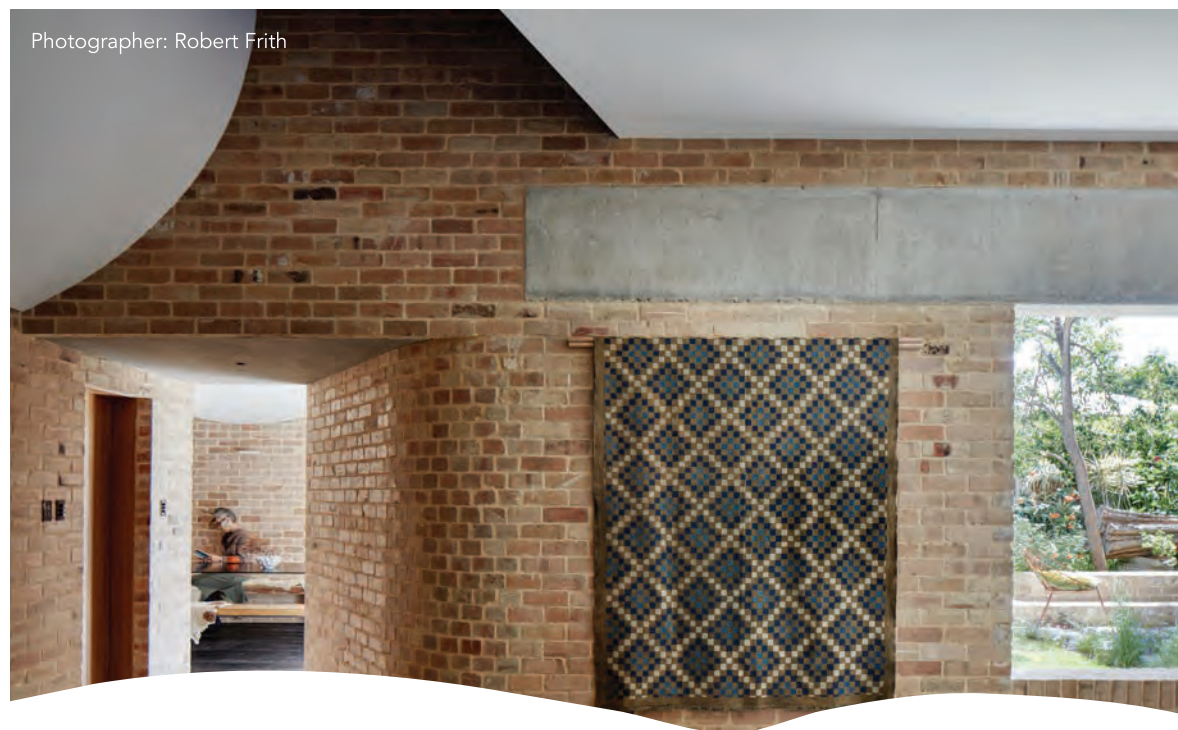
The new extension houses a breakfast room, second living room, main bedroom, toilet and outdoor bathroom. The extension, best described as a series of cave-like chambers made from recycled brickwork, feels weighty and its surfaces are rustic. Openings have no frame and as such appear primitive and hollowed out of the building's mass (there are no lintels – concealed reinforcing has been used).

Light from above enters in a carefully orchestrated sequence, giving the interior a soft glow and a sense of slow discovery. The main bedroom is more compressed than the others and is coloured in shades of light blue, indigo and deep bottle-green, using lime-based paints and natural pigments. Being in this house feels like you're in a secret world in the suburbs. +

**HIGH  
COMMENDATION**  
**HORBURY HUNT  
RESIDENTIAL  
AWARD 2021**



Photographer: Robert Frith



**TOP  
40**

### MANUFACTURER

Recycled Brick

### BUILDER

Kelly Building

### CONTRACTOR

Cunningham Building



Photographer: Sharyn Cairns



**HIGH  
COMMENDATION**  
**HORBURY HUNT  
RESIDENTIAL  
AWARD 2021**

## CAMBERWELL HOUSE

CLARE COUSINS  
ARCHITECTS

### MANUFACTURER

Brikmakers

### BRICK COLLECTION

Lloyd Wright Brick Collection -  
New Orleans Vintage Tumbled

### BUILDER

ProvanBuilt

### CONTRACTOR

Hawthorn Brick and Block

**TOP  
40**

Camberwell House is a contextually responsive intergenerational home. Surrounded by significant heritage brick and tiled dwellings, the project operates at the intersection of traditional form and contemporary spatial arrangement. The design seeks a contemporary reinterpretation of traditional forms and layout, offering the occupants a sense of seclusion while maintaining the connected living spaces expected of a new home.

The dwelling establishes a sense of privacy through a front threshold of courtyards. These spaces, defined by masonry walls and a continuous concrete lintel, help mediate the liminal space between the front yard and the home's interior. The solid red brick walls create cohesion and solidity, and allow controlled views to private courtyards.

A dark charcoal roof tile, from Monier Roofing's Nullarbor range, was chosen for the pitched roof form and picks

up on the dark flashes in the brickwork. Complementing its context, the singular terracotta roof sweeps from front to back, the minimal detailing and refined aesthetic distinguishing the dwelling from its heritage neighbours. A concealed balcony cut into the tiled roof form allows for a private connection to the outdoors from upstairs, while an internal window between the first floor and living room below provides a sense of connection between levels and occupants. +



**HIGH  
COMMENDATION**

**HORBURY HUNT  
RESIDENTIAL  
AWARD 2021**

Photographer: Tess Kelly

## WATERFALL HOUSE CLARE COUSINS ARCHITECTS

Glen Iris's Summerhill Estate is known for its consistent character of brick interwar dwellings. Set within this context, Waterfall House embraces and expands on the period features of the existing Art Deco home while increasing space and liveability for its occupants.

The home features Art Deco touches and warm, calm spaces, with the curved original facade echoed by the cream brick addition. The sculptural and monolithic nature of the proposed building forms made brick an obvious material choice for the project. A handmade Krause Bricks product was selected, as it resonates with the character of the existing dwelling and provides an added textural quality. Sinuous glass rolls underneath the brick facade, embracing the sculptural nature of the additions and allowing the living spaces to flow from one room to the next.

Internally, a series of level changes addresses the fall of the site and defines spaces, while maintaining connections between. Spotted gum is used throughout the interior in joinery, furniture and wall panelling, complementing the warm, earthy tones of the exterior.

Freeform sandstone paving and verdant green garden beds surround the dwelling. At the rear, a narrow outcrop of the lush garden creeps toward the centre of the house, giving occupants in the new sunken living room the feeling of being ensconced by greenery. +

### MANUFACTURER

Krause Bricks

### BRICK COLLECTION

Standard Brick Range - Cream

### BUILDER

Original Projects

### CONTRACTOR

Brick And Mortar Masonry

**TOP  
40**



**HIGH  
COMMENDATION**  
**HORBURY HUNT  
RESIDENTIAL  
AWARD 2021**

## **NIGHTSKY** **PETER STUTCHBURY** **ARCHITECTURE**

Nightsky was born from a client who had a passion for astronomy and wanted to view the galaxy from the comfort of his home, located in the upper Blue Mountains, west of Sydney. This design has produced an innovative home built around the concept of allowing the night sky to come into the house through an unglazed automatic skylight, built into the brick parabolic roof.

The full brick construction was crafted from recycled bricks. The dwelling faces north and includes features such as hydronic floor heating, polished concrete and double-glazed windows. Evacuated tubes along with a 20 kW solar system with 34 kW of battery storage and a 60,000-litre water tank assist with achieving sustainability year-round.

The client uses a wheelchair, so Nightsky was designed to be accessible. The Australian blue gum hardwood doors are universally accessible, and the main entry door is automated. The main living area takes you back to bygone days: a mystical experience is created by the recycled brick flooring and the view of the brick parabolic roof, looking through the skylight to the mesmerising night sky. +

**TOP  
40**

**MANUFACTURER**  
Recycled  
**BUILDER / CONTRACTOR**  
Dimark Constructions





1



2

TOP 40



3



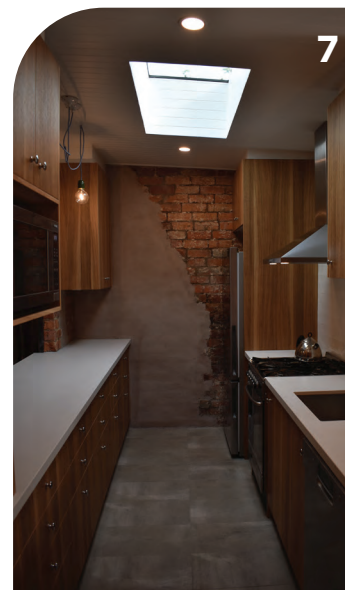
4



5



6



7



8

VIEW ALL THE  
ENTRIES ONLINE

### 1. K HOUSE RENATO D'ETTORRE ARCHITECTS

B: Lime Building Group  
C: DB Bricklaying  
M: Bowral Bricks  
P: Bowral Dry Pressed - Commons

### 2. THIS HOUSE NEVER ENDS STEFFEN WELSCH ARCHITECTS

B: Renovation One  
C: A.P.S Bricklaying  
M: Recycled

### 3. THE WAREHOUSE STUDIO P ARCHITECTURE & INTERIORS

B: Hilton Residential  
C: Ainz Bricklaying  
M: Recycled

### 4. THE BELMONT HOUSE BETTER BUILT HOMES

B: Better Built Homes  
C: Euro Bricklaying  
M: Austral Bricks  
P: La Paloma - Castellana

### 5. ORIENT STREET HOUSE PHILIP STEJSKAL ARCHITECTURE

B: Vital Building Company  
C: John Higgins Bricklayer

### 6. EMMANUEL COMMUNITY HOUSE LANIGAN ARCHITECTS

B: Bianchini Builders  
C: Bruno Russo Bricklaying & Stephen McCabe Bricklaying  
M: Midland Brick  
P: Estilo - Blanco; Kalbarri - Red

### 7. BEST HOUSE ONE20 ARCHITECTS

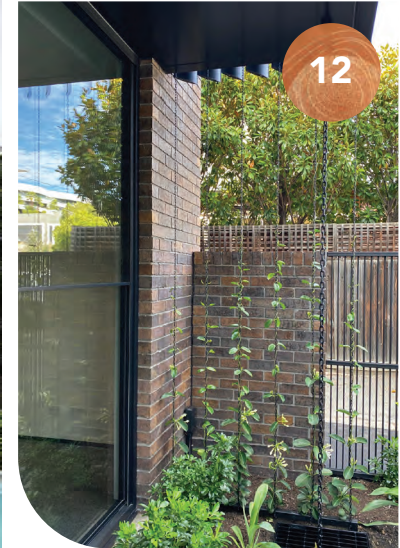
B & C: Greenvue  
M: Recycled

### 8. WARNERS BAY DEVELOPMENT NEWCASTLE BUILDING & CONSTRUCTION

B: Newcastle Building & Construction  
C: Newcastle Brick & Block Laying  
M: PGH Bricks & Pavers  
P: Metallic - Nickel Flash







**9. DEEPWATER HOUSE  
DIEPPE DESIGN**

B & C: HP Constructions  
M: PGH Bricks & Pavers  
P: Crafted Sandstocks - Cadman

**10. BELLE VUE 38 DISPLAY HOME  
LITTLE CONSTRUCTIONS**

B: Little Constructions  
M: PGH Bricks & Pavers  
P: Manhattan - Chelsea

**11. WALKER HOUSE  
KP ARCHITECTS**

B & C: Crowndale Properties  
M: PGH Bricks & Pavers  
P: Pure Linens - Flannel Grey

**12. DOW STREET HOUSE  
PETER WIGHT & ASSOCIATES**

B: Secon Constructions  
C: Shoreline Masonry  
M: Krause Bricks  
P: Pressed Brick Range - Grampians Blue

**13. FITZROY HOUSE  
WINDIATE ARCHITECTS**

B: Dimpat  
C: ABS bricklaying  
M: Austral Bricks  
P: Metallix - Blackstone

**14. BONA VISTA  
STUDIO PRINEAS**

B & C: Carrington Building  
M: Bowral Bricks  
P: Capital Red

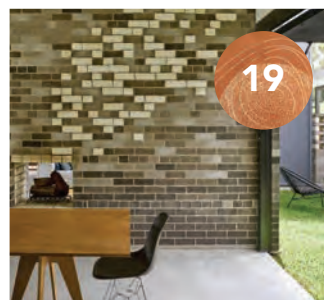
**15. YARRAVILLE CASA FAMILIAR  
KATE VERNON ARCHITECTS**

B: Portside Building  
C: C&L Laidlaw Bricklaying  
M: Recycled

**16. THE LAMONT  
TERRACE HOMES / BGC DEVELOPMENT**

B: TERRACE Homes  
C: BGC Housing Group  
M: Brikmakers  
P: Revival Brick Collection - Treasury Red Tumbled





**17. THE FITZROY  
TERRACE HOMES / BGC DEVELOPMENT**

B: TERRACE Homes  
C: BGC Housing Group  
M: Brikmakers  
P: Revival Brick Collection - Treasury Red Tumbled

**18. ...NUMBER 78  
BLACK RABBIT ARCHITECTURE +  
INTERIORS**

B: Dimco Building  
C: John Koren  
M: Austral Bricks  
P: La Paloma - Miro

**19. C HOUSE  
TONIC ARCHITECTURE + DESIGN**

B: Lions Pride Building  
C: Mark Edmund  
M: Austral Bricks, Bowral Bricks  
P: Austral Bricks: Urban One - Grecian Gold, Chiffon, Pepper & Silver  
Bowral Bricks: Chillingham White

**20. CARPENTER'S SQUARE HOUSE  
ARCHITECTS EAT**

B: McKerlie Builders  
C: House of Bricks  
M: Bowral Bricks  
P: Murray Grey; Bowral Hamlet Pavers - Ash

**21. RAVEN HOUSE  
BIJL ARCHITECTURE**

B: Wilkinstruct  
C: Nomad Bricklaying  
M: PGH Bricks & Pavers  
P: Morada - Ceniza

**22. HOUSE AT PRETTY BEACH  
LAHZNIMMO ARCHITECTS**

B: BlairBuild  
C: Highview Bricklaying

**23. PENRYN AVENUE  
KLOPPER & DAVIS ARCHITECTS**

B: Wandoo Building Company  
M: Austral Bricks  
P: La Paloma - Dali & Miro







24



25



26



27



28



29



30



31

**24. DEPUCH CLOSE  
KLOPPER & DAVIS ARCHITECTS**

B: Phil Kelleher Homes  
M: Recycled

**25. NORTH STREET  
KLOPPER & DAVIS ARCHITECTS**

B & C: Adrian Zorzi  
M: Geraldton Brick, Austral Bricks,  
Midland Bricks  
P: Geraldton Brick - Face Brick - Millennium  
White & Mad Dog Parchment Customl  
Austral Bricks - Hamlet - Blue  
Midland Bricks - Maxi

**26. CARR STREET  
KLOPPER & DAVIS ARCHITECTS**

B & C: Black Swan Developments  
M: Midland Brick  
P: Midland Reds - Kalbari; Commons

**27. KATHLEEN AVE  
X-SPACE ARCHITECTS**

B: Orlando David Catenacci  
C: Ciccarone Bricklaying Contractors  
M: Midland Brick  
P: Pearl - Black Pearl

**28. DECO HOUSE  
MIHALY SLOCOMBE**

B: Basis Builders  
C: Stonehenge Bricklaying  
M: Nubrik  
P: Traditional - Chapel Red

**29. TURN HOUSE  
REBECCA NAUGHTIN ARCHITECT**

B: Clancy Constructions  
C: Polar Brickwork  
M: Austral Bricks  
P: La Paloma - Gaudi & Miro

**30. PROJECT 26  
JOHN CONTOLEON ARCHITECTURE**

B: Kasso Constructions  
C: David Hill Bricklaying  
M: Austral Bricks  
P: La Paloma - Miro

**31. PUTNEY RESIDENCE  
AJH+**

B: Trident Project  
C: All About Masonry  
M: Bowral Bricks  
P: Bowral Blue; Recycled Brick





**32. TENNYSON STREET  
LIEFTING MERLO HOMES & C  
KAIROUZ ARCHITECTS**

B: Liefting Merlo Homes  
C: ILB Bricklaying  
M: Austral Bricks  
P: Metallix - Graphite

**33. HOUSE HURLSTONE PARK  
CARLA MIDDLETON ARCHITECTURE**

B: Sean Murphy Building  
C: Brick 2 Block  
M: Recycled

**34. CYPRESS CRESCENT  
MICHAEL WITTY ARCHITECTS**

B: Curley Builders  
C: Sorbello Bricklaying  
M: Daniel Robertson, GB Masonry  
P: Daniel Robertson: Hawthorn 470 - Red  
GB Masonry: Wedge Breezeblock -  
Porcelain

**35. THE GAIA  
GO HOMES**

B: GO Homes  
C: Magnum Bricklaying  
M: Brikmakers  
P: Traditional Brick Collection - Classic  
Cream; Caledonian Brick Collection -  
Aberdeen

**36. E-STREET  
RESIDENTIAL ATTITUDES BUILDING  
DESIGNER**

B & C: Residential Attitudes  
M: Brikmakers  
P: Traditional Brick Collection -  
Vintage Red Tumbled

**37. SOUTH MELBOURNE TERRACE  
ELIZA BLAIR ARCHITECTURE /  
STUDIO TOM**

B & C: Kleev Homes

**38. CITY BEACH  
RESIDENTIAL ATTITUDES BUILDING  
DESIGNER**

B & C: Residential Attitudes  
M: Midland Brick  
P: Pearl - Grey Pearl

**39. PIGDON STREET  
ANGELUCCI ARCHITECTS**

B: The Building Chapter  
C: MPF Brickwork

**40. BARDOLPH GARDENS  
BREATHE**

B & C: Greg Scott Construction  
M: Recycled

**41. RICHMOND HOUSE  
THEREFORE**

B: LocBuild  
C: We Brick Vic  
M: Krause Bricks  
P: Emperor 380mm - Ghost







**42. CAMS WHARF PAVILION HOUSE**  
**GEORGINA WILSON ARCHITECT**  
 B & C: AKD Building  
 M: Krause Bricks  
 P: Emperor 380mm - Ghost

**43. BECK STREET**  
**LINEBURG WANG**  
 B: Struss Constructions  
 C: Masonry Concepts



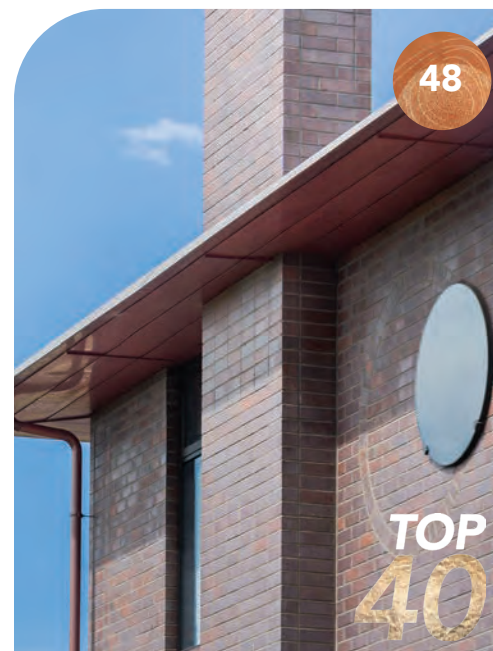
**44. VALENCIA ST**  
**CURIOUS PRACTICE**  
 B: Built by Eli  
 C: Brick Slayer  
 M: Recycled



**45. RIVER HOUSE**  
**FURMINGER**  
 B: Furminger  
 C: Dean O'Neil Bricklaying  
 M: Austral Bricks, Bowral Bricks, Nubrik  
 P: Austral Bricks: La Paloma - Miro;  
 Hamptons - Whitehaven; Ultra Smooth - Tempo  
 Bowral Bricks: Chillingham White  
 Nubrik: Artisan - Avalanche



**46. EAST FREMANTLE HOUSE**  
**NIC BRUNSDON**  
 B: TALO Construction  
 C: R & M Ransome Bricklayers  
 M: Bowral Bricks  
 P: Simmental Silver



**47. CASTLECRAG HOUSE**  
**POLLY HARBISON DESIGN**  
 B & C: Hawkett Constructions



**48. LEAKE STREET, PEPPERMINT GROVE**  
**RODRIGUES BODYCOAT ARCHITECTS**  
 B: Lime Street Projects  
 C: Stecko Bricklaying  
 M: Geraldton Brick  
 P: Face Brick Range - Governor Sterling



**49. OWSTON HILL**  
**MEAGHAN WHITE**  
 B & C: Adrian Zorzi  
 M: Bowral Bricks  
 P: Chillingham White





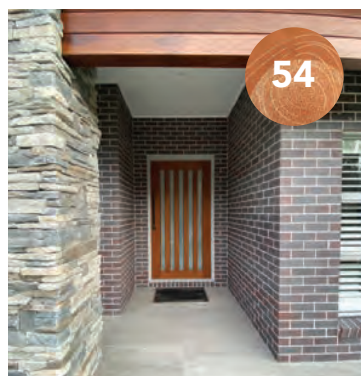
50



53



51



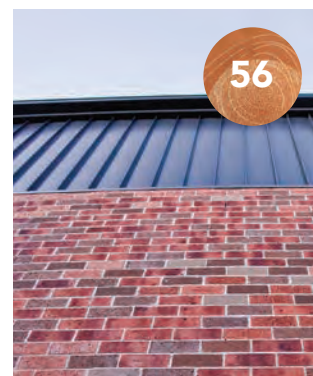
54



55



52



56



57

#### 50. ELSTERNWICK HOUSE STAR ARCHITECTURE

B: S.T.A.R Kolektiv  
C: Citywide Brick and Blocklaying  
M: Recycled

#### 51. CLIFTON ST B.E ARCHITECTURE

B: Dome Building Projects  
C: Hawthorn Brick Laying  
M: Lohas Australia  
P: Piera Eco Ceramica Roman Handmade Brick - Claro 280x135x50mm

#### 52. LINDFIELD HOUSE POLLY HARBISON DESIGN

B: Zandt Building  
C: Narrabeen Brickwork  
M: Bowral Bricks  
P: Bowral Blue - Bullnose; Recycled Brick

#### 53. FISHER TOPHAT & MAYFAIR / ACHIEVE DESIGN GROUP

B: Mancini Made  
M: PGH Bricks & Pavers  
P: Smooth - Flame Red

#### 54. SEABREEZE POINTE 35 DISPLAY HOME COAST BUILDING COMPANY / PETER NIKSIC

B: Coast Building Company  
C: Robert Lonsdale Bricklaying  
M: PGH Bricks & Pavers  
P: Metallic - Blue Steel Flash

#### 55. BRISTOL 30 GUEST SUITE DISPLAY HOME EDEN BRAE HOMES

B: Eden Brae Homes  
M: PGH Bricks & Pavers  
P: Composite - Charcoal; Morada - Blanco

#### 56. ST ANNE'S SQUARE NJA

B & C: Innovative Design and Construction  
M: Recycled

#### 57. FORSYTH 33 EDEN BRAE HOMES

B: Eden Brae Homes  
M: PGH Bricks & Pavers  
P: Alfresco - Truffle







**58. MIDLAND  
EDEN BRAE HOMES**  
B: Eden Brae Homes  
M: PGH Bricks & Pavers  
P: Velour - Volcanic



**59. TOORAK  
EDEN BRAE HOMES**  
B: Eden Brae Homes  
M: PGH Bricks & Pavers  
P: Composite - Aluminium



**62. XANDER HOMES  
XANDER HOMES**  
B: Xander Homes  
M: PGH Bricks & Pavers  
P: Morada Splits - Blanco



**61. MAYFAIR MANOR  
MAYFAIR HOMES**  
B: Mayfair Homes  
M: PGH Bricks & Pavers  
P: Crafted Sandstocks Splits - Chisholm



**63. AGGARWAL HOUSE  
PLUS ARCHITECTURE**  
B & C: IQR Projects  
M: PGH Bricks & Pavers  
P: Morada Linear - Blanco



**64. HILLCREST STREET  
RYDER BUILDING GROUP ILLAWARRA /  
SUSTAINABLE BY DESIGN / HOUSE OF  
PLANNING**  
B: Ryder Building Group Illawarra  
M: PGH Bricks & Pavers  
P: Manhattan - East Hampton

**65. SAN TROPEZ DISPLAY HOME  
MONTGOMERY HOMES**  
B: Montgomery Homes  
M: PGH Bricks & Pavers  
P: Metallic - Pewter

**66. CAYMAN DISPLAY HOME  
MONTGOMERY HOMES**  
B & C: Montgomery Homes  
M: PGH Bricks & Pavers  
P: Manhattan - Tribeca



**THIS AWARD WAS PREVIOUSLY PART OF THE HORBURY HUNT AWARD AND IN 2013, EVOLVED TO INCLUDE CONCRETE MASONRY. IN 2014 THIS AWARD WAS NAMED AFTER RENOWNED AUSTRALIAN LANDSCAPE ARCHITECT BRUCE MACKENZIE AM.**

Bruce Mackenzie is responsible for some of Australia's greatest landscape projects, spanning over five decades. He has designed numerous Australian landmarks and has won many design awards, highlighting his great contribution to the landscape design community. In 2011 he wrote and published *Design With Landscape*, his fifty-year journey through landscape architecture. Mackenzie was a founding member of the Australian Institute of Landscape Architects (AILA) and has been a state and national president. He was presented with the AILA Award in Landscape Architecture in 1986, and in June 1999 on the occasion of the Queens Birthday honours list, he was made a member of the Order of Australia (AM). +




THINK BRICK AUSTRALIA represents Australia's clay brick and paver manufacturers.

Think Brick's purpose is to ensure clay brick is recognised as a pre-eminent building material by leading architects, developers, builders and property owners. We are committed to promoting exemplary building and landscape design using clay bricks and pavers.

We create national campaigns to inspire designers, builders and consumers to use clay brick as a contemporary, versatile and inspiring building material.





Fish Lane Town Square  
Richards and Spence  
Photographer: David Chatfield



The Concrete Masonry Association of Australia (CMAA) is the peak body that represents the concrete masonry manufacturers of Australia. This includes bricks, blocks, pavers and retaining walls.

The CMAA supports the concrete masonry industry by providing technical information and advice to architects, engineers, specifiers and educators.

The CMAA publishes technical manuals, data sheets and software packages relating to concrete block walling, concrete paving, permeable paving and concrete masonry retaining walls, which are free to download from the CMAA's website.

The Association also conducts workshop courses and provides a technical advisory service for masonry design queries.

ELEMENTAL THINK BRICK AWARDS 2021



## SUTTON FORREST GROWERS GARDEN NETTLETON TRIBE

The Sutton Forest Growers Garden represents growth, possibility and sustainability. The clients had a vision to create beauty in imperfection, to build a garden that would look at home in the rustic highlands – almost as if it had been there for a hundred years.

The garden, created in collaboration with the clients, was designed at a size and scale that allows it to be fully sustainable for the family and community. The 26,000-brick project features PGH Bricks and Pavers Character bricks in Brown Terrain. The use of rejected or seconds dry pressed bricks serves to create an accelerated and weathered look. Brickwork features include hit-and-miss panels that allow natural light to filter onto the garden, dog toothing trim with bricks on edge to create shadow lines in all light, and 470 x 470 mm piers with mitred crowns. The garden has been ergonomically designed, with the raised garden beds allowing for ease of access.

The project is a celebration of clients and contractors working in partnership to achieve a shared vision. +

### MANUFACTURER

PGH Bricks & Pavers

### BRICK COLLECTION

Character - Brown Terrain

### BUILDER / CONTRACTOR

Glenn Gazzard Bricklaying

TOP  
40

WINNER

BRUCE MACKENZIE  
LANDSCAPE  
AWARD 2021







Photographer: Jon Harris Photography

**“The bricklaying pattern at Sutton Forest Growers Garden elevates the use of masonry in a creative way. It displays both solidity and porosity and it’s compelling in the way that it allows a partial view through the wall to the framed garden within, and from within looking out. The sense of delicate filigree will have a far-reaching influence on landscape designs.”**

**2021 JURY**





## FISH LANE TOWN SQUARE

RICHARDS AND  
SPENCE

**TOP  
40**

### MANUFACTURER

Nubrik, Bowral Bricks

### BRICK / PAVER COLLECTION

Nubrik: Pavers - Custom Colour

Bowral Bricks: Capitol Red

### BUILDER

Shape

### CONTRACTOR

Bland 2 Brilliant

A once-derelict carpark on an inner-city service lane has been transformed into a new town square.

Located underneath existing railway bridges in South Brisbane, the new and existing buildings are reconciled

with brickwork. A closely matched selection of bricks, pavers and mortar unifies the public realm, with the materials continuing inside and out, extending from walls onto pavements. Shadows from the Queensland sun animate the carefully articulated brick facades throughout

the day, activating the shady retreat under the bridges. With a long-term ambition, the design team's selection of brick anticipates the patina of time and the prospect for an enduring piece of urban infrastructure. +



# SPRINGVALE COMMUNITY HUB

RUSH WRIGHT  
ASSOCIATES /  
LYON ARCHITECTS

Springvale Community Hub showcases the use of brick throughout the landscape. The Bowral Bricks London range of pavers was used to create a large, embracing “necklace” that weaves around existing trees, leading people to the main entrances. An existing stand of river red gums forms the centrepiece of the composition, with brick colours and patterns harmonised to the variegated colours of the tree trunks. The colours of Chestnut, Maple, Regency Grey, Brahman Granite and Silver Sands are blended in a swirling pattern that echoes the colours and forms found in nature. Bricks are laid on a suspended slab around the trees, which is in turn laid on an irrigation and aeration array.

The long pathway changes in width and orientation, enlarging to form gathering spaces, areas for play and places for safe community connection. Edges are rarely cut, saving waste; instead, the bricks are left whole, creating a sense of a frayed edge. This adds to the sensation that the bricks are part of a natural surface.

This project explores remarkable contrasts in the use of colour, demonstrating the versatility of brick in the creation of an exceptional public realm. +

ELEMENTAL THINK BRICK AWARDS 2021

HIGH  
COMMENDATION  
BRUCE MACKENZIE  
LANDSCAPE  
AWARD 2021

Photographer: John Gollings

TOP  
40

**MANUFACTURER**  
Bowral Bricks  
**PAVER COLLECTION**  
London Pavers - Chestnut,  
Maple, Regency Grey,  
Brahman Granite & Silver Sand  
**BUILDER**  
Ireland Brown Constructions  
**CONTRACTOR**  
Melbourne Paving / Brickit



## BECK STREET LINEBURG WANG

The conversion of an existing chamferboard home atop a red brick undercroft, Beck Street negotiates its compromised ground plane burdened by flood, overland flow and infrastructure to bring garden and outdoor amenity to its new public rooms.

This is a house of contrast by necessity – of mass and utility in the floodplain, of lightness and gathering in the canopy of the captured significant gum tree.

The existing masonry undercroft is retained, its red brick language borrowed and amplified. In the floodplain, no solid wall construction can obstruct water flow – a new brick wall inserted falls away to become piers, pervious. The entry spine marches deep into the site, straddled by gardens, to the elevated places of gathering. The undercroft is robust, a muddled palette of reds and terracotta to minimum habitable floor level, as if the waters had already coursed through. Careful brick set-out organises a language of horizontal striations, recalling datums of sediment.

Brick remnants around the site are retained – functionally to facilitate the flood report, poetically to be celebrated and stitched into. New red brick grows from the site, as if carved from the terrain at moments of outdoor gathering. +

**HIGH  
COMMENDATION**  
**BRUCE MACKENZIE  
LANDSCAPE  
AWARD 2021**

Photographer: Christopher Frederick Jones



**NEW  
ENTRANT  
2021**

**TOP  
40**

**BUILDER**  
Struss Constructions  
**CONTRACTOR**  
Masonry Concepts



**HIGH  
COMMENDATION  
BRUCE MACKENZIE  
LANDSCAPE  
AWARD 2021**



**TOP  
40**

**MANUFACTURER**

Adbri Masonry

**PAVER COLLECTION**

Paving – Brickpave

**BUILDER**

Lahey Constructions

**CONTRACTOR**

BNJ Landscaping

## CHARLES STURT UNIVERSITY PORT MACQUARIE CAMPUS

**B V N**

This project is a masterplan for Charles Sturt University's new campus at Lake Innes, Port Macquarie. The masterplan proposes a campus composed of staged courtyard buildings. The final campus will form three large courtyards of differing proportions and character, creating vital landscape areas and outdoor rooms that support the university community, promote the visibility of academic functions and concentrate on campus life.

The completed Stage 2 forms two sides of the campus's second courtyard, connected with Brickpave pathways in Honed Steel from Adbri Masonry. The architectural form of the two new buildings (known as 2A and 2B) has been considered to match their differing orientation.

Building 2A is conceived as a linear bar opening to the north to a remaining line of mature forest reserve. The building connects to the campus with a high multipurpose foyer to its east, the length of the building straddling a second entry from the street at the west and a pedestrian gateway connection at its middle.

Building 2B lines the street edge at its upper level, modulating light and noise with its stepping facade, while in section the building opens to the new courtyard below.

Both structures continue a consistent exploration of building with brick, strongly grounded in the rich red clay of the local area. Sheltered circulation and shallow footprints maximise the benign climate, and the gradual realisation of the grand courtyard spaces continue to anchor the campus in the land. +

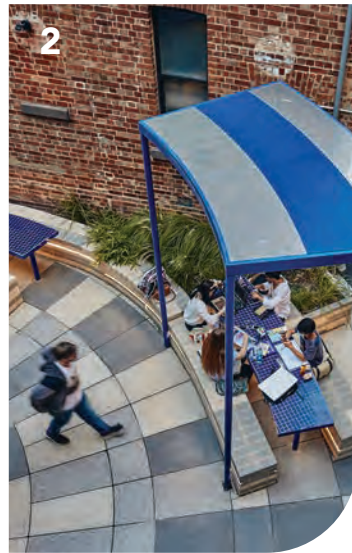




1



6



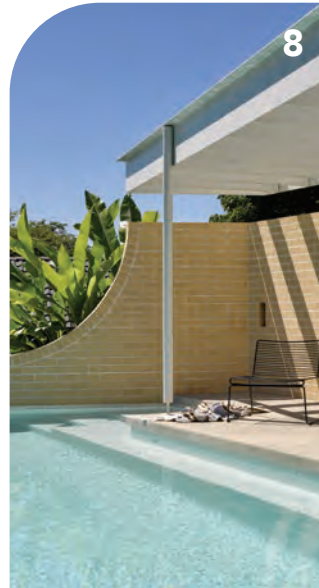
2



7



3



8



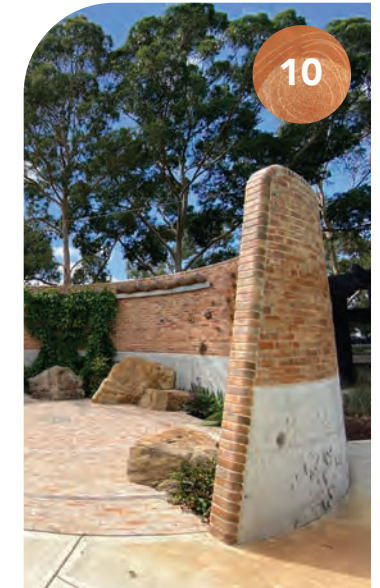
4



9



5



10

### 1. SERVITE COLLEGE, TUART HILL SWANBURY PENGLASE ARCHITECTS

B: McCorkell Constructions  
C: Lightning Brick Pavers  
M: Urbanstone  
P: Engineered Stone - Golden Gunmetal,  
Silver Grey - Honed

### 2. RMIT RODDA LANE PRECINCT SIBLING ARCHITECTURE

B: Evergreen Civil  
C: McLaren Bricklaying  
M: Adbri Masonry  
P: Architectural Masonry - Architectural  
Brick

### 3. MERRI GREEN HANSEN PARTNERSHIP

B: Codstream  
C: Marcus Group  
M: Adbri Masonry  
P: Paving - Trihex - Charcoal,  
Natural (Grey) & Terracotta

### 4. OATLANDS PROJECT LANDSCAPING TASMANIA

B & C: Landscaping Tasmania  
M: Adbri Masonry  
P: Paving - Havenbrick & Quadro

### 5. MACQUARIE UNIVERSITY FACULTY OF ARTS & MEDICINE PUBLIC DOMAINS GROUP GSA

B: Lipman  
C: Glascott Landscape & Civil  
M: Urbanstone  
P: Engineered Stone - Albany Beige  
Shotblast, Galaxy Shotblast, Macquarie  
Shotblast & MUAP Shotblast

### 6. NIGHTSKY PETER STUTCHBURY ARCHITECTURE

B & C: Dimark Constructions  
M: Recycled

### 7. GROSVENOR LANE SHARED ZONE NORTH SYDNEY COUNCIL

B: North Sydney Council  
C: Ezy pave  
M: Adbri Masonry  
P: Paving - Unipave & Trupave

### 8. CITYVIEW RESIDENCE KIERON GAIT ARCHITECTS

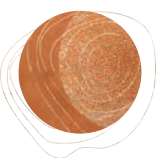
B: Nick Pearson  
C: Elvis and Rose  
M: Nubrik  
P: Artisan - Aurora

### 9. VALENCIA ST CURIOUS PRACTICE

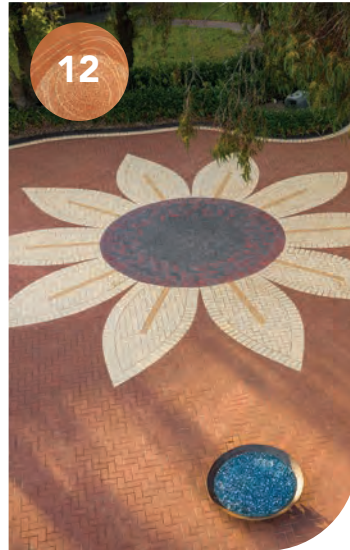
B: Built By Eli  
C: Brick Slayer  
M: Recycled

### 10. AUBURN BOTANIC GARDENS ENTRY STURT NOBLE ASSOCIATES

B: Greater West Landscapes  
C: Next Level Bricklaying  
M: PGH Bricks & Pavers  
P: Dry Pressed Architectural -  
Flicker & Black Beauty







**11. MURRAY BRIDGE SOLDIERS' MEMORIAL HOSPITAL REDEVELOPMENT**  
**WILTSHIRE SWAIN ARCHITECTS**

B: Shape Australia  
C: D&V Services

**12. SUNFLOWER PAVING**  
**B&C PAVING AND LANDSCAPING**

B & C: B&C Paving and Landscaping  
M: Adbri Masonry  
P: Paving - Havenbrick - Oatmeal, Sunstone, Biscuit Blend, Charcoal & Port Blend

**13. INVERELL SHIRE COUNCIL OTHO STREETScape**  
**KING AND CAMPBELL**

B & C: Inverell Shire Council  
M: Adbri Masonry  
P: Paving - Ecotrihex

**14. CARNIVAL LANE**  
**STRUXI DESIGN / CKD ARCHITECTS**

B & C: Taddio Building Group  
M: Adbri Masonry  
P: Paving - Euro Stone

**15. MIDNIGHT HOTEL & APARTMENTS OCULUS**

B: Geocon  
C: The Glascott Group  
M: Adbri Masonry  
P: Paving - Euro Stone

**16. ROYAL PERTH YACHT CLUB - THE CATALINA BAR**  
**LT ARCHITECT**

B & C: W Fairweather & Son  
M: Austral Masonry, UrbanStone  
P: Austral Masonry: Engineered Stone Smooth - Alabaster; Vertico - Alabaster; Split Face - Alabaster  
UrbanStone: Engineered Stone - Gunmetal (Honed)

**17. CADDENS CORNER**  
**NETTLETONTRIBE**

B: Mainbrace  
C: The Sydney Brick Paving Company  
M: Adbri Masonry  
P: Euro Stone - Riverina and Prague; Quadro - Fossil; Trupave - Charcoal

**18. BELLOWS HOUSE**  
**ARCHITECTS EAT**

B: Cannon Built  
C: Hawthorn Bricklaying  
M: Bowral Bricks, GB Masonry  
P: Bowral Bricks: Hamlet Pavers - Sepia  
GB Masonry: Honed - Porcelain

**19. LINDFIELD HOUSE**  
**POLLY HARBISON DESIGN**

B: Zandt Building  
C: Narrabeen Brickwork  
M: Bowral Bricks  
P: Bowral Blue - Bullnose

**20. CARPENTER'S SQUARE HOUSE**  
**ARCHITECTS EAT**

B: McKerlie Builders  
C: House of Bricks  
M: Bowral Bricks  
P: Hamlet Pavers - Ash & Murray Grey



**THE KEVIN BORLAND  
MASONRY AWARD  
RECOGNISES PROJECTS  
THAT HIGHLIGHT THE DESIGN  
POTENTIAL OF CONCRETE  
MASONRY IN COMMERCIAL  
OR RESIDENTIAL BUILT  
ARCHITECTURE.**

Kevin Borland (1926–2000) was an innovative architect, a generous patron of younger architects, and an inspiring and much-loved design studio teacher.

After beginning his architectural studies at the University of Melbourne in 1944, Borland deferred to serve in the West Pacific in World War II. On returning, he completed his studies and graduated with a Bachelor of Architecture in 1950.

After working at Mockridge Stahle & Mitchell's office, Borland, together with friends Peter McIntyre and John and Phyllis Murphy, won the national competition to design the Melbourne

swimming and diving stadium for the 1956 Summer Olympics.

Together with his former student and friend Daryl Jackson, Borland completed the design and construction of the distinguished brutalist Harold Holt Memorial Swimming Centre (1968–1969) in Melbourne's Glen Iris.

During a time when peer awards were far less common than they are today, Borland's designs received numerous awards from state chapters of the Royal Australian Institute of Architects. His work made a significant contribution to the trajectory of Melbourne architecture. +



The Concrete Masonry Association of Australia (CMAA) is the peak body that represents the concrete masonry manufacturers of Australia. This includes bricks, blocks, pavers and retaining walls.

The CMAA supports the concrete masonry industry by providing technical information and advice to architects, engineers, specifiers and educators. The CMAA publishes technical manuals, data sheets and software packages relating to concrete block walling, concrete paving, permeable paving and concrete masonry retaining walls, which are free to download from the CMAA's website.

The Association also conducts workshop courses and provides a technical advisory service for masonry design queries.



South Yarra House  
Pop Architecture /  
Beatrix Rowe Interior Design  
Photographer: Willem-Dirk du Toit



# LA SCALA

RICHARDS AND SPENCE

The need for densification to accommodate population growth has long been at odds with the perception of Brisbane as a subtropical place dominated by single, detached, lightweight character housing (notably, the Queenslander). Central to this conundrum is the design of buildings that address issues of permanence and adaptability. Set in an urban context, the brief for La Scala was to make a building that could evolve over time – a non-prescriptive building that could be a home, an office, a gallery or a restaurant. A place for significant events.

Conceived as a ruin, the building's exterior features white concrete blocks with a horizontal coursing pattern that appropriates a stone wall. Deep reveals and colonnades impart a sense of mass. Contrasts of low and high, light and dark, rough and smooth are magnified by a limited material palette.

The building is formally and materially reductive, without being stylistically minimal. It abandons nostalgic local vernacular references, balancing modern form with the scale of the context. +

**“La Scala really stood out to us as a clear winner in this category, for the way it elevates the use of masonry through a sense of plasticity. The block has a very subtle finish, which is complemented by the concrete finishes. The project's muted, organic quality responds to sunlight in a lovely way through soft and hard shadows. It has the poetic qualities of a simple design response – almost a phenomenological one. La Scala has a true topographic sensibility with great depth, both in a vertical and horizontal fashion. There's a desire from other designers and clients, nationally, for a similar sophisticated approach to the use of masonry in architectural design.”**

2021 JURY







Photographers: David Chatfield (main image),  
Yaseera Moosa (above).

**TOP**  
**40**

**MANUFACTURER**  
GB Masonry  
**MASONRY COLLECTION**  
Honed – Porcelain  
**BUILDER**  
Solido



## DIVIDED HOUSE

JACKSON CLEMENTS BURROWS

Divided House captures an opportunity to embrace cultural, social and environmental sustainability commitments and endeavours to enrich the heritage place through personal interpretation. The home reinforces the importance of neighbourly interaction through the strategic location of the living spaces and communal seating at the streetscape interface.

The house is divided into two brick building forms located at the front and rear of the site, linked by a single-storey "lean-to" referencing the outhouse laundry and lean-to that existed on the site prior to their demolition.

GB Masonry's Honed capping blocks are utilised as pavers and play a role in defining the primary external ground-floor surface and the floor space between the two buildings. The pavers lead from the entry through to the kitchen/informal living spaces and out to the sunken courtyard and garden. The pavers are skilfully butt-joined in a continuous staggered pattern and define the lean-to structure as a sheltered verandah – conceptually blurring the boundary between inside and outside. In the retreat living space, the Honed capping blocks reappear as a hearth for the fireplace and a step divider between the split levels. +

### MANUFACTURER

GB Masonry

### MASONRY COLLECTION

Honed - Nickel

### BUILDER

BD Projects

### CONTRACTOR

Paul Pritchard Landscapes

**HIGH  
COMMENDATION**

**KEVIN BORLAND  
MASONRY  
AWARD 2021**

**TOP  
40**



Photographer: John Gollings





## THE ROCHESTER

OLA STUDIO /  
BREATHE

TOP  
40

**BUILDER**  
Liberty Builders and Intracon  
**CONTRACTOR**  
Bricklink and BDP Bricklaying

The Rochester is a residential development comprising twenty-four apartments and two retail tenancies, located on Johnston Street in Melbourne's Fitzroy. The precinct is defined by its working-class roots, bohemian lifestyle, gentrification and cultural diversity, being home to the city's diminutive Spanish and Portuguese quarter.

The architects studied ways in which the design could celebrate the precinct's Latin heritage. Finding inspiration

in the tiled facades of Fitzroy's pubs and shops, and the azulejo-clad facade architecture of the Iberian Peninsula, the humble glazed ceramic tile is genesis to the gridded form and patterns repeated over the design at varying scales. This provides a lovely correlation between the two worlds that make this part of Johnston street so unique.

Modern construction materials are used to provide a contemporary interpretation of the humble tile. At a micro

level, detailed masonry breezeblocks offer unique screens and balustrades with a level of detail reminiscent of the traditional tile. At a macro level the grid tile pattern is replicated, highlighting areas of solid wall that are offset with adjacent areas of open space. +



## PEARL BEACH HOUSE

### POLLY HARBISON DESIGN

Pearl Beach House is a bespoke concrete sculpture in the bush, created on a budget that demanded creative solutions. The site is nestled amongst Burrawang scrubby woodland, rainforest species and ancient grass trees, on the edge of Pearl Beach village on the New South Wales Central Coast. Inspired by the patch of blue sky amongst the dense tree canopy, the heavy masonry form wraps around this clearing, elevating living areas to capture the sun.

Off-form concrete is used judiciously, mixed with the concrete block masonry walls to create a restrained palette. The predominance of grey textures enhances the homogenous sculptural quality of the building and grounds the structure in its bush surrounds, with considered bursts of colour in the ceramics and heavily grained timber.

This project explores ways to maintain a connection with the landscape in a building that protects from fire. It is an example of a new type of bush building that responds to its context – a grounded masonry form that steps up the site without exposing the subfloor to fire risk. +

#### MANUFACTURER

National Masonry

#### MASONRY COLLECTION

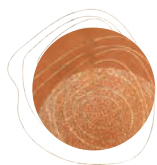
Concrete Grey Block - Half Height

#### BUILDER

Paterson Builders

#### CONTRACTOR

Rick Byrne Bricklaying



NEW  
ENTRANT  
2021



TOP  
40



Photographer: Brett Boardman



## MANUFACTURER

Adbri Masonry

## MASONRY COLLECTION

Architectural Masonry -  
Sandhurst Stone

## BUILDER

Cloverleigh Home  
Improvements

## CONTRACTOR

Michael Lorimer Bricklaying



NEW  
ENTRANT  
2021

HIGH  
COMMENDATION

KEVIN BORLAND  
MASONRY  
AWARD 2021

## SOUTH YARRA HOUSE

POP ARCHITECTURE  
/ BEATRIX ROWE  
INTERIOR DESIGN

A sculptural, corbelled brick form anchors the addition to this red brick Edwardian home in Melbourne's South Yarra. The brick element's ivory colour, curved parapet and textured vertical corbel come together to create a simple yet striking focal point.

Functionally, this form acts as a services core. Internally, it captures the kitchen and rangehood exhaust, airconditioning plenum, sliding door and laundry storage. Externally, it accommodates a pizza oven and flue, wood stack, garden storage and services supply, while also acting as a balustrade and overlooking screen at the roof terrace level.

Input from the builder and bricklayer greatly enriched the design outcome, particularly for the feature brick form. The bricklayer recalled learning the "corduroy" method on one of his first jobs and was excited to revisit the technique here in a contemporary way. The homeowner has remarked that they enjoy living with such an interactive brick element – they particularly love the way the colour and contrast in the brick change as the day unfolds. +

TOP  
40

FINANCIAL THINK BRICK AWARDS 2021

Photographer: Willem-Dirk du Toit





1



6



2



7



3



4



5



8



9

### 1. COOMERA CUBS BASEBALL CLUBHOUSE JEMADE DESIGN AND CONSTRUCTION

B: Jemade Design and Construction  
C: Calmat Brick and Blocklaying  
M: National Masonry  
P: Designer Block Range - Honed Face Charcoal

### 2. RAVEN HOUSE BIJL ARCHITECTURE

B: Wilkinstruct  
C: Nomad Bricklaying  
M: Austral Masonry  
P: Architec Honed - Pearl Grey

### 3. BANSKIA HOUSE APHORA ARCHITECTURE

B: JMG Build  
C: Bob Jarrett Bricklaying  
M: National Masonry  
P: Designer Block Range - Smooth Face Glacier, Honed Pearl Grey & Sea Breeze Block Platinum

### 4. BAY HOUSE STUDIO PRINEAS

B & C: Avad Construction Group  
M: GB Masonry  
P: Aspect Honed - Porcelain

### 5. YMCA VOCATIONAL SCHOOL - VICTORIA POINT MODE

B: Bedford Built  
C: J & L Bricklaying  
M: National Masonry  
P: Designer Block Range - Smooth Face Macadamia

### 6. CARLTON TERRACE CLARE COUSINS ARCHITECTS

B: Marino Construction  
M: National Masonry  
P: Designer Block Range - Calibrated Face Alabaster

### 7. MT ELIZA HOUSE MRTN ARCHITECTS

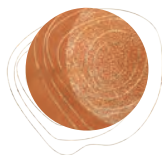
B: Saltwater Builders  
C: Stone and Brick  
M: GB Masonry  
P: Honed - Nickel

### 8. COVENTRY STREET APARTMENTS ARCHITECTS EAT

B: Hardwick Build Co  
C: Newmac Bricklaying  
M: Adbri Masonry  
P: Architectural Masonry - Architectural Brick

### 9. TERACOTA BENNETT MURADA ARCHITECTS

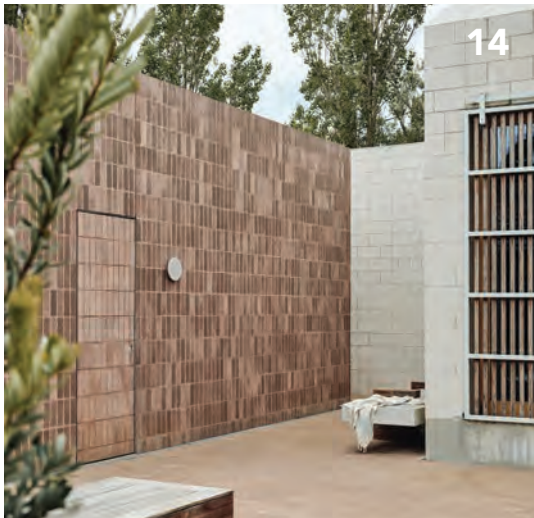
B: Cemento  
C: AFM Masonry  
M: Austral Masonry, GB Masonry  
P: Austral Masonry: Breeze Blocks - Wedge  
GB Masonry: Smooth - Porcelain







**10. ELJONA  
BENSON MCCORMACK**  
B & C: GCON1  
M: Austral Masonry  
P: Architec Honed - Honed Pearl Grey



**11. MOAMA SPORTS PAVILLION  
BRANDWICK**  
B: Joss Builders  
C: AJP Bricklaying  
M: National Masonry  
P: Designer Block Range - Smooth Face Charcoal



**12. NEW RESIDENCE - EVELINE STREET, MARGATE  
VISION 1 ARCHITECTS**  
B: AMA Building Contractors  
C: J & L Bricklaying  
M: National Masonry  
P: Designer Block Range - Polished Face Glacier



**13. PINE SPRINGS, BALLIFORNIA  
HARLEY GRAHAM ARCHITECTS**  
B: Belcon Constructions  
C: Jeremy Mitchell Block & Bricklaying  
M: GB Masonry  
P: Smooth - Porcelain; Breeze Blocks - Porcelain



**14. BELLOW HOUSE  
ARCHITECTS EAT**  
B: Cannon Built  
C: Hawthorn Bricklaying  
M: GB Masonry, Bowral Bricks  
P: GB Masonry: Honed - Porcelain  
Bowral Bricks: Hamlet Pavers - Sepia



**15. RUXTON RISE RESIDENCE  
STUDIOFOUR**  
B: UWood Projects  
C: Haydens Bricklaying  
M: Boral Masonry  
P: Designer Block - Smooth Face Ash Grey



**16. MONTROSE PRIMARY SCHOOL GYMNASIUM  
H2O ARCHITECTS**  
B: Switchco  
C: FVP Bricklaying  
M: National Masonry  
P: Designer Block Range - Polished Face Alabaster, Pearl, Grey & Charcoal



**17. HECTORVILLE SPORTS AND COMMUNITY CLUB  
DESIGNINC**  
B: Sarah Constructions  
C: Total Brickwork Solutions  
M: Boral Masonry  
P: 100mm Series Blocks - Designer





VIEW ALL THE  
ENTRIES ONLINE  
[THINKBRICK.COM.AU](http://thinkbrick.com.au)



**18. SMORGON ACTIVE LIVING CENTRE**  
**DESIGNINC**

B: FourSQ  
C: Formbrick / A&R Durran bricklaying  
M: Adbri Masonry  
P: Architectural Masonry - Architectural Brick

**19. HOUSE IN NEWTOWN**  
**ARCHITECT GEORGE**

B & C: Pacific Projects  
M: GB Masonry  
P: Honed - Nickel

**20. SELANDRA RESERVE SPORTS PAVILION**  
**CITY OF CASEY / PROGRAMMED FACILITIES**  
**MANAGEMENT**

B: Lloyd Group  
C: McPherson Bricklaying  
M: Island Block & Paving  
P: Premium Range - Mist Eco Smooth  
& Ebony Eco Smooth

**21. PROJECT VIII - DONCASTER EAST**  
**DEKOMA**

B: Dekoma  
C: Prime Brick  
M: Adbri Masonry  
P: Architectural Masonry - Sandhurst Stone

**22. RAMLEIGH RESERVE SPORTS PAVILION**  
**CITY OF CASEY / PROGRAMMED FACILITIES**  
**MANAGEMENT**

B: Lloyd Group  
C: McPherson Bricklaying  
M: Island Block & Paving  
P: Premium Range - Mist Eco Smooth  
& Ebony Eco Smooth

**23. BRUNSWICK LEAN-TO**  
**BLAIR SMITH ARCHITECTURE**

B & C: Cale Peters Constructions  
M: Adbri Masonry  
P: Architectural Masonry - Blended Brick Series

**24. NORTH BEACH HOUSE**  
**DANIEL CASSETTAI DESIGN**

B: Grange Residential + Construction  
C: Boel Bricklaying  
M: Austral Masonry  
P: Vertico Smooth - Harvest







**25. NEW SCHOOLS 2021**  
**BRAND ARCHITECTS / DESIGNINC**  
 B: Kane  
 C: Build It Brick  
 M: Adbri Masonry  
 P: Architectural Masonry - Architectural Brick

**26. LAOS EMBASSY**  
**DC8 STUDIO**  
 B: Savills Australia  
 C: Manteena  
 M: Adbri Masonry  
 P: Architectural Masonry - Smooth Stone



**27. MACPHERSON RECREATION RESERVE**  
**BRAND ARCHITECTS**  
 B: Lloyd Group  
 C: Lawler Bricklaying  
 M: Adbri Masonry, PGH Bricks & Pavers  
 P: Adbri Masonry: Architectural Masonry - Architectural Brick  
 PGH Bricks and Pavers: Aspire - Mist

**28. MELTON CENTRAL COMMUNITY CENTRE**  
**BRAND ARCHITECTS**  
 B: Alchemy  
 C: Victoria Masonry  
 M: Adbri Masonry  
 P: Architectural Masonry - Architectural Brick



**29. TREVALLYN HOUSE**  
**GILLIAN VAN DER SCHANS BUILDING DESIGNERS**  
 B: Tim Hawkins Constructions  
 C: Burrige Bricklaying  
 M: Adbri Masonry  
 P: Architectural Masonry - Smooth Stone





## ROBIN DODS ROOF TILE EXCELLENCE AWARD

**SINCE THE INTRODUCTION OF THE ROOF TILE EXCELLENCE CATEGORY INTO THE AWARDS IN 2014, THE RESPONSE HAS BEEN EXCEPTIONALLY POSITIVE.**

Many worthy past winners have pushed the envelope in innovative roof design using terracotta and concrete roof tiles in their residential or commercial building projects.

To further showcase the sustainability benefits, versatility and design possibilities of terracotta roof tiles, a new award category was introduced in 2016, named after renowned architect Robin S. Dods (1868-1920). Robin Dods believed in sustainable design to suit the climate, especially in roofing. His distinctive style of gabled roofs for domestic dwellings, which combined passive solar design while allowing for ventilation and insulation, became prevalent throughout Queensland in the early 1900s. +

Roof tiles redefine value and challenge the laws of design to transform a home into a timeless masterpiece. The Australian Roofing Tile Association strives to promote stylistic, sustainable roofing solutions that Australians nationwide can be proud of.



Our mission is to deliver the next generation in innovation and sponsor new artforms.

We seek to inspire through the power of natural, Australian products to generate homes that are infinitely more desirable, valuable and liveable.

We stand behind roof tiles not just for their design potential but for their commitment to impeccable quality, safety and protection. From their long-lifespans to eco-friendly manufacture, roof tiles offer numerous features and benefits that are invaluable to any enterprising homeowner.

Our growing commitment to promote the roofing tile industry, sees us provide apprenticeship opportunities for prospective tilers and convey issues on health and safety to both consumers and our members.

ARTA represents over 90% of the Australian Roofing Tile Industry.



Terracotta House  
Austin Maynard Architects

ELEMENTAL THINK BRICK AWARDS 2021

61





## CAMBERWELL HOUSE

CLARE COUSINS ARCHITECTS

Camberwell House is a contextually responsive intergenerational home. Surrounded by significant heritage brick and tiled dwellings, the project operates at the intersection of traditional form and contemporary spatial arrangement. The design seeks a contemporary reinterpretation of traditional forms and layout, offering the occupants a sense of seclusion while maintaining the connected living spaces expected of a new home.

The dwelling establishes a sense of privacy through a front threshold of courtyards. These spaces, defined by masonry walls and a continuous concrete lintel, help mediate the liminal space between the front yard and the home's interior. The solid red brick walls create cohesion and solidity, and allow controlled views to private courtyards.

A dark charcoal roof tile, from Monier Roofing's Nullarbor range, was chosen for the pitched roof form and picks up on the dark flashes in the brickwork. Complementing its context, the singular terracotta roof sweeps from front to back, the minimal detailing and refined aesthetic distinguishing the dwelling from its heritage neighbours. A concealed balcony cut into the tiled roof form allows for a private connection to the outdoors from upstairs, while an internal window between the first floor and living room below provides a sense of connection between levels and occupants. +

### MANUFACTURER

Monier Roofing

### ROOF TILE COLLECTION

Nullarbor - Slate Grey

### BUILDER

ProvanBuilt

### CONTRACTOR

Camberwell Potteries Roofing

WINNER

ROBIN DODS ROOF  
TILE EXCELLENCE  
AWARD 2021

TOP  
40





“Camberwell House stood out to us as a clear winner in this category, for the sophisticated and delicate way that roof tiles are utilised. The use of the material is not overpowering – it is not the main feature of the house, but it shows how the noble and traditional roof tile can be used through modern interpretation quite successfully.”

2021 JURY

ELEMENTAL THICK BRICK AWARDS 2021

Photographer: Sharyn Cairns





## HIGH COMMENDATION

ROBIN DODS  
ROOF TILE  
EXCELLENCE  
AWARD 2021



## TERRACOTTA HOUSE

AUSTIN MAYNARD ARCHITECTS

Terracotta House is a communal-living family “compound.” Akin to a village square, the project allows the owner and her son’s family to live in independent homes on one block, with a common garden and pavilion. With a subtle mix of shared and private spaces, this is a multi-generational home like no other.

Previously the client had only a small courtyard filled with terracotta pots. She asked for a large garden and a new house that “had to be beautiful”. The beauty of Terracotta House is derived from the

materials used to create it. Earthy red tiles, which respond in tone to the light throughout the day, spill down the walls to meet reclaimed brick. The application of Monier Roofing Nullarbor tiles as a wall cladding came from exploring the possibilities of using materials in unexpected ways. The roof form pop-ups respond directly to siting and sunlight.

Terracotta House is architectural, highly detailed and beautiful, with a scale that is deliberately small and rational to maximise outdoor space. +

### MANUFACTURER

Monier Roofing

### ROOF TILE COLLECTION

Nullarbor – Earth

### BUILDER / CONTRACTOR

Spence Construction

TOP  
40



## COMO HOTEL PRO ROOF GROUP

The Como Hotel in Como, Western Australia, was built in 1939, designed by architects Oldham Boas Ednie-Brown and constructed by E. Allwood and Sons. It has undergone several refurbishments since then, lastly done in 2020. A retro favourite just south of Perth's CBD, the hotel has been revamped and brought to life with a multi-million-dollar refurbishment taking the classic heritage pub into a new era. The Art Deco heritage is enhanced with contemporary style to create a beautiful fusion of old and new. The project team complemented the beautiful heritage-listed hotel with Monier Roofing's Marseille roof tiles in Tanbark. +

### MANUFACTURER

Monier Roofing

### ROOF TILE COLLECTION

Marseille - Tanbark

### BUILDER

Riverslea Construction

### CONTRACTOR

Pro Roof Group

ELEMENTAL THINK BRICK AWARDS 2021

### HIGH COMMENDATION

ROBIN DODS  
ROOF TILE  
EXCELLENCE  
AWARD 2021

TOP  
40

65





## TJURINGA HOUSE

JESSE BENNETT STUDIO

Tjuringa re-imagines and retells the story of the site as a new, adaptable family home, conjuring the character of the previous home on the site and applying it to a program that resonates with a new family and the extended future family structures that may evolve. The use of reclaimed terracotta roof tiles as external walls adds character and warmth to the project. The Marseille roof tiles in Earth from Monier Roofing blend effortlessly with the remaining facade, creating a feeling of cohesiveness and confidence. +

### HIGH COMMENDATION

ROBIN DODS  
ROOF TILE  
EXCELLENCE  
AWARD 2021

TOP  
40

#### MANUFACTURER

Monier Roofing

#### ROOF TILE COLLECTION

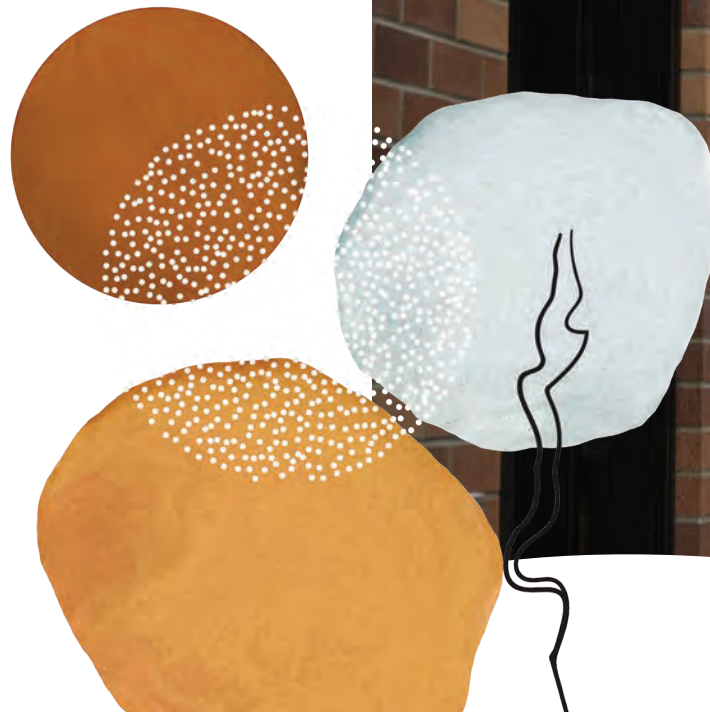
Marseille – Earth

#### BUILDER

Mark Ross Timber Homes

#### CONTRACTOR

Bradford Monier







## LEE COUNTRY HOME

CLEO DI PAOLO AND ASSOCIATES

### MANUFACTURER

Bristle Roofing

### ROOF TILE COLLECTION

Terracotta Roof Tiles (La Escandella) - Curvado Roja

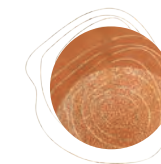
### BUILDER

Andree Lee

### CONTRACTOR

Bristle Roofing

**TOP**  
**40**



**NEW**  
**ENTRANT**  
**2021**

The vision for Lee Country Home was straight from the vineyards of Tuscany: a country oasis where the family could lose themselves in old-world Europe. The use of La Escandella Terracotta Curvado tiles from Bristle Roofing allows the home to blend seamlessly into its natural surroundings. The roof not only makes a statement when viewed from above, but even more so from its most enjoyable viewing platform with a glass of wine in hand, sitting in the alfresco area overlooking the magnificent landscape. Detailed thought and planning have allowed the rustic beauty of the terracotta tiles to remain visible and become a significant feature when seen from below, while still achieving all the requirements that the remote location dictates. +





1



2



3



4



5



6



7



8

### 1. DOUGLAS ST, ST IVES LIGHTING CONSTRUCTION

B: Lighting Construction  
C: Bush to Beach Roof Tilers  
M: Monier Roofing  
P: Marseille - Peak

### 2. VALLETTA HENLEY ARC

B: Henley Arc  
C: Pristine Roofing  
M: Bristile Roofing  
P: Prestige - Deep Shadow

### 3. GOLDFIELD MIMOSA HOMES

B: Mimosa Homes  
C: SRJB Roofing  
M: Bristile Roofing  
P: Concrete Roof Tiles - Cool Smoke

### 4. LANGMORE MIMOSA HOMES

B: Mimosa Homes  
C: Western Roof Tiling  
M: Bristile Roofing  
P: Concrete Roof Tiles - Deep Shadow

### 5. MOONEE PONDS PROJECT PROFESSIONAL PLANNING

B: Apex Homes Australia  
C: Alice Roof Tiles  
M: Alice Roof Tiles  
P: Stuart - Coal Dust

### 6. GLENVILL CREATE GLENVILL HOMES

B: Glenvill Homes  
C: Boral Roofing  
M: Boral Roofing  
P: Vogue - Charcoal Grey

### 7. OAKLAND II RIVERLEIGH HOMES

B: Riverleigh Homes  
C: Macarthur Roof Tiling  
M: Bristile Roofing  
P: Terracotta Roof Tiles (La Escandella) - Planum Slate

### 8. STRATHFIELD POC+P

B: Addison Projects  
C: Dreamroof  
M: Bristile Roofing  
P: Terracotta Roof Tiles (La Escandella) - Planum Blackstone







**9. RIVERSDALE MEWS  
IKONOMIDIS REID**

B: Apex Constructions  
C: Alice Roof Tiles  
M: Alice Roof Tiles  
P: Stuart - Coal Dust

**10. FISHER  
ACHIEVE DESIGN GROUP / TOPHAT & MAYFAIR**

B: Mancini Made  
C: Bradford Monier  
M: Monier Roofing  
P: Horizon - Sambuca



**11. KNOCKDOWN & REBUILD OF OUR DREAM  
HOME  
RENEE DUNN ARCHITECT**

B: MCD Constructions  
C: Bradford Monier  
M: Monier Roofing  
P: Cambridge - Soho Night

**12. CUSTOM DESIGNER STYLE HOME  
ALLURA HOMES**

B: Allura Homes  
C: Bradford Monier  
M: Monier Roofing  
P: Horizon - Barramundi



**13. THE BEAUTY OF A CUSTOM BUILT HOME  
ALLURA HOMES**

B: Allura Homes  
C: Bradford Monier  
M: Monier Roofing  
P: Cambridge - Soho Night

**14. NORTH SHORE HAMPTONS HOME  
ALLURA HOMES**

B: Allura Homes  
C: Bradford Monier  
M: Monier Roofing  
P: Horizon - Barramundi



**15. APARTMENTS BY THE OCEAN  
CITY2SURF ROOFING**

B: City2Surf Roofing  
C: Bradford Monier  
M: Monier Roofing  
P: Nouveau - Peak

**16. INVESTING IN QUALITY  
CITY2SURF ROOFING**

B: City2Surf Roofing  
C: Bradford Monier  
M: Monier Roofing  
P: Cambridge - Soho Night





17



18



19



20



21



22



23



24



25



26

#### 17. TIMELESS TRADITIONAL HOME CITY2SURF ROOFING

B: City2Surf Roofing  
C: Bradford Monier  
M: Monier Roofing  
P: Marseille – Earth

#### 18. SIMPLY LUXURY, SIMPLY HAMPTONS MASTERTON HOMES

B: Masterton Homes  
C: Bradford Monier  
M: Monier Roofing  
P: Madison - Soho Night

#### 19. HAMPTONS IN THE BURBS TRAFELINE AUSTRALIA

B: C Built Properties  
C: Bristle Roofing  
M: Bristle Roofing  
P: Premiere - Matte Grey

#### 20. ST ANNE'S CATHOLIC SCHOOL TENORS BUSH TO BEACH ROOF TILERS

B & C: Bush to Beach Roof Tilers  
M: Monier Roofing  
P: Marseille - Cottage Red

#### 21. FAIR LIGHT AVE, KILLARA BUSH TO BEACH ROOF TILERS

B & C: Bush to Beach Roof Tilers  
M: Monier Roofing  
P: Marseille - Earth, Sunset, Cottage Red,  
Pottery Brown & Peak

#### 22. IVANHOE PEAKS GARY MCFARLANE AND ASSOCIATES

B: Woodridge  
C: Gembrook Roofing  
M: Bristle Roofing  
P: Terracotta Roof Tiles (La Escandella) -  
Planum Slate

#### 23. BALWYN NORTH FRENCH PROVINCIAL PLANNING & DESIGN

B: La Vintage Homes  
C: Gembrook Roofing  
M: Bristle Roofing  
P: Terracotta Roof Tiles (La Escandella) -  
Planum Slate

#### 24. HAMPTONS RETREAT CARLISLE HOMES

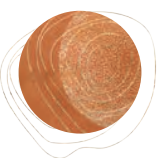
B: Carlisle Homes  
C: Bradford Monier  
M: Monier Roofing  
P: Horizon - Barramundi

#### 25. DESIGNER FAMILY HOME CARLISLE HOMES

B: Carlisle Homes  
C: Bradford Monier  
M: Monier Roofing  
P: Atura - Sambuca

#### 26. SIMPLY YET LUXURIOUS CARLISLE HOMES

B: Carlisle Homes  
C: Bradford Monier  
M: Monier Roofing  
P: Horizon - Barramundi



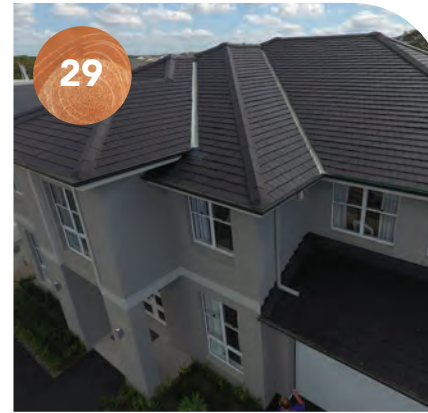




27



28



29



30



31



32



33



34



35

**27. WARM AND WELCOMING DESIGNER HOME**  
**CARLISLE HOMES**  
B: Carlisle Homes  
C: Bradford Monier  
M: Monier Roofing  
P: Atura - Barramundi

**29. PROVINCIAL BOX HILL PROVINCIAL HOMES**  
B: Provincial Homes  
C: Perfection Roofing  
M: Bristle Roofing  
P: Terracotta Roof Tiles (La Escandella) - Visum Slate

**28. FOWLER BOX HILL FOWLER HOMES**  
B: Fowler Homes  
C: A&A Stanco  
M: Bristle Roofing  
P: Terracotta Roof Tiles (La Escandella) - Planum Slate

**30. HERITAGE ELEGANCE BRGUD ROOF TILING**  
B & C: Brgud Roof Tiling  
M: Boral Roofing  
P: Shingle - Asphalt

**31. HAMPTONS HOME WITH A TWIST EDEN BRAE HOMES**  
B: Eden Brae Homes  
C: EME Roofing  
M: Monier Roofing  
P: Horizon - Camelot

**32. CONTEMPORARY HOME WITH A WOW FACTOR EDEN BRAE HOMES**  
B: Eden Brae Homes  
C: EME Roofing  
M: Monier Roofing  
P: Horizon - Barramundi

**33. HEATHMONT HAMPTONS MARIE FRANCIS ARCHITECT**  
B: Ashcor Constructions  
C: Bristle Roofing  
M: Bristle Roofing  
P: Terracotta Roof Tiles (La Escandella) - Planum Caviar

**34. THE ESCAPE ROSS NORTH HOMES**  
B: Ross North Homes  
C: A1 Expert Roofing  
M: Harmony Roof Tiles  
P: Contemporary Shingles - Tarragon

**35. BALWYN TERRACOTTA PLANNING & DESIGN**  
B: La Vintage Homes  
C: Gembrook Roofing  
M: Bristle Roofing  
P: Terracotta Roof Tiles (La Escandella) - Planum Slate



## NEW ENTRANT AWARD

In 2018, the Think Brick Awards expanded with the addition of a 'New Entrant Award' category that encouraged architectural firms to enter and be judged in a separate category if they had not entered before. This category is a great endorsement of the growing momentum of the Think Brick Awards. +

**"This sensitive and mature design response to an existing home creates a spatial energy with both whimsy and delight. Beaconsfield House demonstrates that brick can be used to mesh with the existing fabric of a dwelling so that old and new elements can work together in harmony."**

**2021 JURY**

### BUILDER

Kelly Building

### CONTRACTOR

Cunningham Building

**WINNER**

**NEW ENTRANT  
AWARD  
2021**

**TOP  
40**

## BEACONSFIELD HOUSE

**SIMON PENDAL  
ARCHITECT**

At Beaconsfield House, an existing 1947 worker's cottage has been given new life and extended. The original cottage was stripped-back to its timber frame, jarrah floor and front verandah. Only subtle changes in plan were made to the cottage so that its integrity was maintained. It has been treated on its merits as thin, modest and direct – there is beauty in the cottage's basic quality.

The new extension houses a breakfast room, second living room, main bedroom, toilet and outdoor bathroom. The extension, best described as a series of cave-like chambers made from recycled brickwork, feels weighty and its surfaces are rustic. Openings have no frame and as such appear primitive and hollowed out of the building's mass (there are no lintels – concealed reinforcing has been used).

Light from above enters in a carefully orchestrated sequence, giving the interior a soft glow and a sense of slow discovery. The main bedroom is more compressed than the others and is coloured in shades of light blue, indigo and deep bottle-green, using lime-based paints and natural pigments. Being in this house feels like you're in a secret world in the suburbs. +

Photographer: Robert Frith



## BECK STREET

### LINEBURG WANG

#### BUILDER

Struss Constructions

#### CONTRACTOR

Masonry Concepts

Photographer: Christopher Frederick Jones

# TOP 40

## HIGH COMMENDATIONS

NEW ENTRANT  
AWARD  
2021

Photographer: Brett Boardman

## PEARL BEACH HOUSE

POLLY HARBISON  
DESIGN

#### MANUFACTURER

National Masonry

#### MASONRY COLLECTION

Concrete Grey Block - Half Height

#### BUILDER

Paterson Builders

#### CONTRACTOR

Rick Byrne Bricklaying

## TATE

### CERA STRIBLEY

Photographer: Emily Bartlett Photography

#### MANUFACTURER

Lohas Australia

#### BRICK COLLECTION

Piera Eco Ceramica  
Roman Handmade  
Bricks - Crema -  
280x136x50mm

#### BUILDER

COBEN

#### CONTRACTOR

Brick and Block Solutions  
& Day Bricklaying

Photographer: Brett Boardman

## TERACOTA

### BENNETT MURADA ARCHITECTS

#### MANUFACTURER

Austral Bricks

#### BRICK COLLECTION

Governors - Wakehurst

#### BUILDER

Cemento

#### CONTRACTOR

AFM Masonry





## NATIONAL MEMBERS



[australbricks.com.au](http://australbricks.com.au)



[pghbricks.com.au](http://pghbricks.com.au)

## STATE MEMBERS



[brikmakers.com](http://brikmakers.com)



[midlandbrick.com.au](http://midlandbrick.com.au)

## REGIONAL MEMBERS



[bowralbricks.com.au](http://bowralbricks.com.au)



[danielrobertson.com.au](http://danielrobertson.com.au)



[www.geraldtonbrick.com.au](http://www.geraldtonbrick.com.au)



[krausebricks.com](http://krausebricks.com)



[nvbricks.com.au](http://nvbricks.com.au)



[littlehamptonbrick.com.au](http://littlehamptonbrick.com.au)

## ASSOCIATE MEMBERS



[ancon.com.au](http://ancon.com.au)



[brickbuildsystem.com.au](http://brickbuildsystem.com.au)



[guarditsolutions.com.au](http://guarditsolutions.com.au)



[lohasau.com](http://lohasau.com)

## INTERNATIONAL AFFILIATE



[masonryinstitute.org](http://masonryinstitute.org)





## SPONSORING MEMBERS



an **ADBRI** company  
adbrimasonry.com.au



australmasonry.com.au

## STATE MEMBERS



brikmakers.com



boral.com.au



nationalmasonry.com.au

## GENERAL MEMBERS



bainesmasonry.com.au



bcpbuildingproducts.com.au



cowraconcreteproducts.com.au



islandblock.com.au



urbanstonecentral.com.au



naturalbrick.com.au

## ASSOCIATE MEMBERS



blockaid.com.au



brickbuildsystem.com.au



cathayindustries.com.au



columbiemachine.com



guarditsolutions.com.au



lanxess.com.au

## INTERNATIONAL AFFILIATE



besser.com





## NATIONAL MEMBERS



[boral.com.au](http://boral.com.au)



[bristlerooftiles.com.au](http://bristlerooftiles.com.au)



[monier.com.au](http://monier.com.au)

## STATE MEMBERS



[alicerooftiles.com.au](http://alicerooftiles.com.au)



[harmonyrooftiles.com.au](http://harmonyrooftiles.com.au)



[primeroofsolutions.com.au](http://primeroofsolutions.com.au)

## ASSOCIATE MEMBERS



[lohasau.com](http://lohasau.com)



VIEW ALL THE ENTRIES ONLINE  
THINKBRICK.COM.AU



LISTEN TO THE  
THINK BRICK  
PODCAST



-  thinkbrickaustralia
-  thinkbrickaustralia
-  Think Brick Australia
-  Think Brick Australia



-  CMAAaus
-  cmaaaus
-  Concrete Masonry Association of Australia
-  Concrete Masonry Association of Australia



-  ausrooftiles
-  ausrooftiles
-  Australian Roofing Tile Association