

R E I M A G I N E D

EVEN A BRICK WANTS TO BE SOMETHING.

LOUIS KAHN

HOUSE AT OTAGO BAY
TOPOLOGY STUDIO

WELCOME	3
2019 JURY	4
HORBURY HUNT COMMERCIAL AWARD	7
HORBURY HUNT RESIDENTIAL AWARD	21
HORBURY HUNT COMMERCIAL AWARD ENTRANTS INDEX	32
HORBURY HUNT RESIDENTIAL AWARD ENTRANTS INDEX	33
BRUCE MACKENZIE LANDSCAPE AWARD ENTRANTS INDEX	33
BRUCE MACKENZIE LANDSCAPE AWARD	35
KEVIN BORLAND MASONRY AWARD	45
ROBIN DODS ROOF TILE EXCELLENCE AWARD	55
NEW ENTRANT AWARD	66
BRUCE MACKENZIE LANDSCAPE AWARD ENTRANTS INDEX (CONT'D)	68
KEVIN BORLAND MASONRY AWARD ENTRANTS INDEX	68
ROBIN DODS ROOF TILE EXCELLENCE AWARD ENTRANTS INDEX	69

WELCOME

ELIZABETH MCINTYRE

GROUP CEO, THINK BRICK AUSTRALIA,
CONCRETE MASONRY ASSOCIATION OF
AUSTRALIA & AUSTRALIAN ROOFING TILE
ASSOCIATION

The Think Brick Awards continue to celebrate exemplary architecture and the use of clay brick, concrete masonry and roof tiles in contemporary Australian design. Each year the quality of entries set the standard for Australian architecture through the new and innovating ways in which the materials are applied.

Projects that have been awarded a High Commendation highlight the collaboration between architect – manufacturer and brick craftsmanship to produce buildings that push the limits of masonry and roof tiles. This is what these Awards are all about.

This year's winners are to be congratulated for their imagination, skill and craftsmanship. I hope these projects ignite your creativity and inspire the creation of your future designs championing the use of brick, block, pavers and roof tiles. +



I HOPE THESE PROJECTS IGNITE
YOUR CREATIVITY AND INSPIRE THE
CREATION OF YOUR FUTURE DESIGNS
CHAMPIONING THE USE OF BRICK,
BLOCK, PAVERS AND ROOF TILES.



ELIZABETH MCINTYRE

THINK BRICK AUSTRALIA, CONCRETE MASONRY ASSOCIATION OF AUSTRALIA & AUSTRALIAN ROOFING TILE ASSOCIATION

Elizabeth McIntyre has more than twenty years of experience in governance, brand development, marketing and organisational change.

Prior to joining Think Brick, Elizabeth held marketing director positions with Walt Disney Television, the Australian Jockey Club and Sports and Entertainment Limited. Elizabeth played a key role in evolving Ford's V8 Supercar program to convert sponsorship to sales of Ford performance vehicles. She has worked with Australian and international sport and theatre talent and was responsible for launching the High School Musical franchise and its then-unknown stars in Australia.

Elizabeth is a graduate member of the Australian Institute of Company Directors and a Board Member of the Building Products Innovation Council, Cyclone Testing Station, Australia. She holds a Bachelor of Business from the University of Technology Sydney, a Masters in International Business from Macquarie University and has most recently completed senior leadership courses at Harvard Business School. +



RACHEL NOLAN KENNEDY NOLAN

Rachel Nolan is a founding partner of architecture practice, Kennedy Nolan. She is crucially involved in the design direction of the practice with expertise in creating built environments that are inspiring and memorable.

Fascinated by the material and the immaterial, Rachel is both conceptually driven and pragmatic, focused on creating enduring settings for life. With twenty-five years in practice, she contributes more broadly to the architecture profession through lectures, teaching, mentoring and collaborations.

Rachel has served the Australian Institute of Architects as a lecturer and juror and is a member of the Honours Committee. She is currently Chair of the University of Melbourne Architecture Advisory Board and a founding member of The Boyd Circle. +



PATRICK KENNEDY KENNEDY NOLAN

Patrick Kennedy co-founded Kennedy Nolan with Rachel Nolan. With Rachel he established and continues to lead the practice's distinctive design direction. He pursues design at Kennedy Nolan through investigations into detail, materiality and the evocative nature of form.

Patrick's involvement in projects continues throughout their various phases, ensuring qualities that are conceived at the beginning are executed in the built work. He has been closely involved with maintaining the steady growth of Kennedy Nolan, helping to shape it into a stable, established, award-winning practice.

He has lectured on design around Australia and taught in the master's program at the University of Melbourne. He has been a juror for the Australian Institute of Architects and other design competitions and was recently appointed a founding member of The Boyd Circle. +



MELISSA BRIGHT
MAKE ARCHITECTURE

Melissa Bright is the owner and founding director of MAKE Architecture, a Melbourne-based practice that has gathered a collection of diverse and highly acclaimed built work. MAKE is best known for its houses, but the practice is currently working on a number of city-making projects across a variety of scales and types including civic, educational and multi-residential projects.

Melissa has led the MAKE team since starting the practice in 2006. Her prior experience includes team leadership at LAB and work in London, Kuala Lumpur and Beijing. A broadly based lineage of work experience has influenced the ethos that underpins the practice today. The practice values innovative design thinking, thoughtful material explorations, respect for heritage, deference to civic context and rigorous acknowledgement of environmental influences. A deep-seated passion for design excellence has fueled these values, allowing Melissa and the practice to create widely awarded built outcomes. +



BILLY KAVELLARIS
KUD

Billy Kavellaris is the managing director of Kavellaris Urban Design (KUD), which he established in 2002. He leads a team of architects to complete projects that include single residential dwellings, high-density residential, public and commercial buildings and major high-rise developments. Billy has also taught at the University of Melbourne and has been a guest critic at various universities.

KUD is interested in architecture as an intellectual and philosophical construct, founded on ideas that are materialised and translated into an architectural language. The core of the practice's philosophy seeks to engage in conscientious environmental design interventions, as a foundation for delivering unique and intelligent architecture that meets the client's requirements and budgets.

KUD has been widely recognised locally and internationally through leading architectural publications, journals and on television, and has received national and international awards for residential and commercial projects. +



ANDREW HAGEMANN
FRINGE ARCHITECTS

Andrew Hagemann is principal and founder of Fringe Architects, which delivers ethically, socially and environmentally responsible residential architecture. The practice focuses on themes integral to creating new typologies in housing design such as sustainability, housing affordability, ageing in place, community and intergenerational design.

Andrew has been a juror for Australian Institute of Architects state awards programs as well as a design tutor at the University of Western Australia's summer architecture program and Curtin University's architectural design program. Fringe Architects also runs a practice-based internship program aligned with the University of Western Australia's Masters of Architecture practice stream.

In 2018 Andrew established a building company, Transition, which invests in demonstration projects as well as constructing Fringe Architecture projects. Transition also collaborates with Fringe Architecture to investigate innovations in product and material use, assembly processes and new construction methods. +

THINK BRICK
AWARDS
2019



THINK BRICK AUSTRALIA represents Australia's clay brick and paver manufacturers.

Think Brick's purpose is to ensure clay brick is recognised as a pre-eminent building material by leading architects, developers, builders and property owners. We are committed

to promoting exemplary building and landscape design using clay bricks and pavers.

We create national campaigns to inspire designers, builders and consumers to use clay brick as a contemporary, versatile and inspiring building material.

HONBURY HUNT COMMERCIAL AWARD

THE CALILE HOTEL
RICHARDS & SPENCE

PHOTOGRAPHER Sean Fennessy

ARC
KOICHI TAKADA
ARCHITECTS

THINK BRICK
AWARDS
2019

HORBURY HUNT

COMMERCIAL AWARD

THIS AWARD WAS INITIATED BY
THE HORBURY HUNT CLUB AND
BY REQUEST FROM ARCHITECTS
AND DESIGNERS

The award's purpose is to honour innovation and craftsmanship in brickwork and to recognise the contribution of architects, builders, bricklayers and manufacturers in that process.

The Horbury Hunt Commercial Award category includes built projects that exemplify outstanding craftsmanship and innovation through the use of clay face brick and pavers. The award is named after John Horbury Hunt (1838–1904), a renowned architect who came to Australia from America in 1863. Hunt was known for introducing his distinctive and radical architecture to Sydney and rural New South Wales, including St Peter's Anglican Cathedral in Armidale, and Convent of the Sacred Heart and Tivoli in Rose Bay. +

PHOTOGRAPHER Simon Wood Photography

MANUFACTURER Bowral Bricks **BRICK COLLECTION** Bowral Dry Pressed - Hereford Bronze
BUILDER Hutchinson Builders **CONTRACTOR** Favetti

PHOTOGRAPHER
Tom Ferguson Photography

"A sign of maturity of the use of brick in Australia. A very special contribution to the city of Sydney."

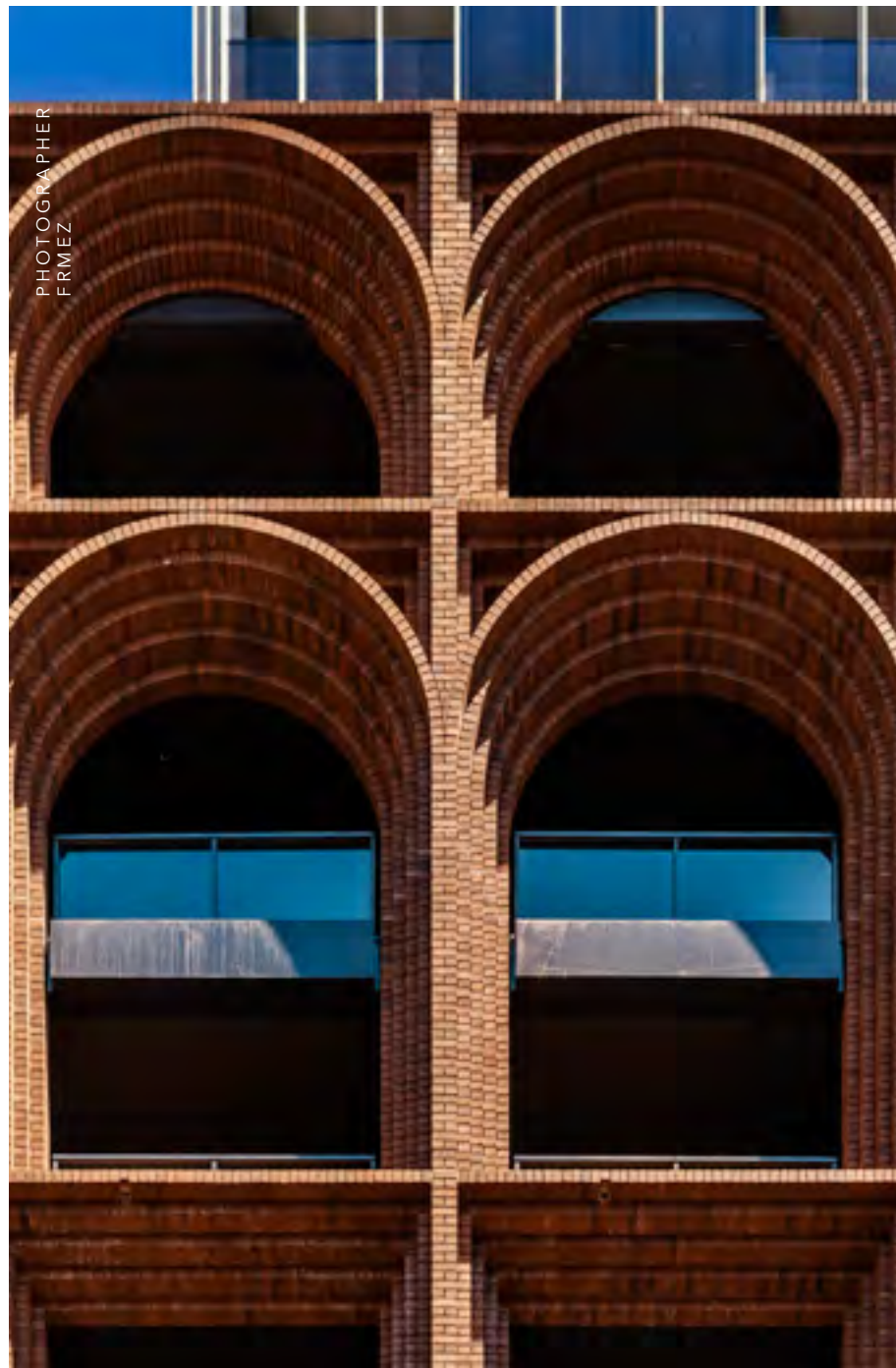
ARC

KOICHI TAKADA ARCHITECTS

Arc by Koichi Takada Architects combines craftsmanship and texture to create a contemporary building that respects the rich historical context of its surrounding urban fabric.

The pair of twenty-six-storey mixed-use towers with distinctively arched roofscapes have joined Sydney's celebrated skyline. The two slim towers rise from an eight-storey masonry podium inspired by the heritage buildings in the area. The 300,000 handcrafted bricks blend seamlessly with the delicate historic context, creating a public through-site connection between Clarence and Kent Streets. The name, Skittle Lane, refers to its past life as a bowling alley for sailors and soldiers. Above, fifty-nine fins travel up the length of the building, culminating in an organic crown feature. Instantly distinguishing Arc from the rest of skyline, the curved roof form celebrates how the tower meets the sky.

The façade is inspired by the masonry components in the significant heritage buildings next door – the Red Cross building and Andrew Bros Warehouse – drawing from their characteristic arches. A sense of duality is introduced to the façade, represented by the varied aesthetics of the podium and tower. Informed by the curvilinear nature of Sydney Harbour and the brickwork in neighbouring buildings, the materials and details have a level of intricacy and authenticity that relates strongly to Sydney's past. +

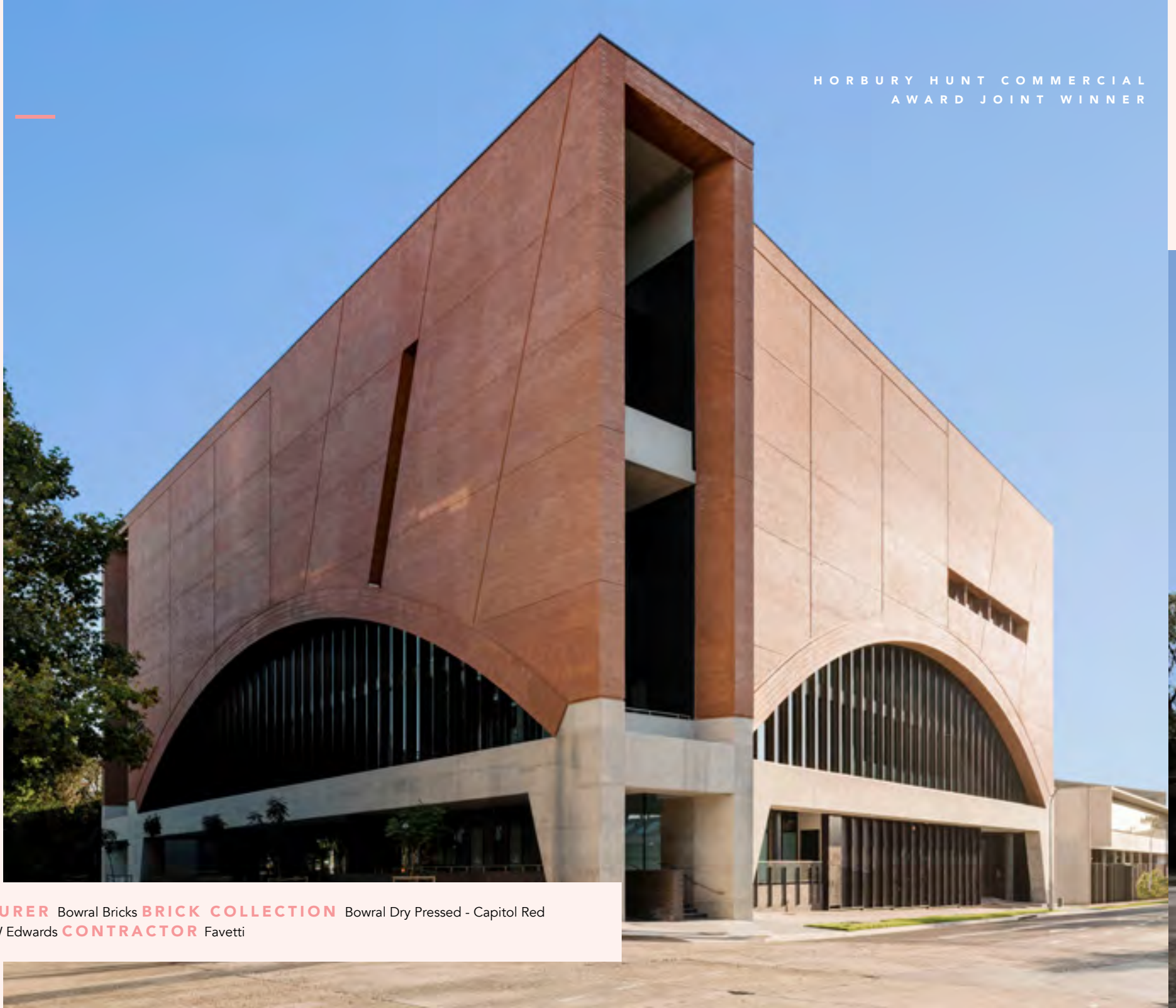


PHOTOGRAPHER
FRMEZ

JOINT WINNER
2019

1 0 —

HORBURY HUNT COMMERCIAL
AWARD JOINT WINNER



MANUFACTURER Bowral Bricks **BRICK COLLECTION** Bowral Dry Pressed - Capitol Red
BUILDER A W Edwards **CONTRACTOR** Favetti

JURY
2019

"Bold, brave and harkens back to the glory days of public infrastructure. The brickwork is incredibly sculptural, and the project has a lovely human scale."



THINK BRICK
AWARDS
2019

JOINT WINNER

2019

ROC

SMART DESIGN STUDIO

The new Rail Operations Centre for Sydney Trains was designed by Jacobs in association with Smart Design Studio. The brief called for a vast top-lit, solid-walled control room atop several floors of open commercial workspace. This presented an opportunity to create a unique building that positively contributes to the urban fabric of the Green Square town centre and expresses its function as a piece of railway infrastructure.

The entire form has been enclosed within a massive masonry wall for structural support and security. To moderate the building's mass and to create connections with the surrounding streets, large arched openings in the north and east façades span forty metres and forty-five metres respectively. These work as substantial beams that support the heavy brick walls above and allow glazed openings at the base.

An expansive control room centralises all the critical operations teams, and an extremely large screen has been incorporated to enable the controllers to monitor the network. The high ceiling is punctuated by skylights that direct natural light over the flexible working environment. The building is clad in locally made red brick that is redolent of the dominant colour of local warehouses, Sydney's historical buildings and Australia's red earth. The commonplace nature of brickwork and its familiar texture have been used as a counterpoint to the extraordinary scale that defines this building's identity. +

— 11

1 2 —

HORBURY HUNT COMMERCIAL AWARD
HIGH COMMENDATION

ARLINGTON GROVE SMART DESIGN STUDIO

Smart Design Studio's plan for Arlington Grove has delivered a new residential precinct that is beautifully landscaped. The former industrial site has been converted into 246 well-planned apartments, arranged around a series of leafy courtyards and lanes.

The four buildings that make up the project are carefully located on the site to contain the extensive landscaping and maximise the number of bright, sunny apartments with views over the district to the CBD skyline and the park. The narrow footprints promote natural cross-ventilation, and the building heights are unified, sitting at either four storeys where they address the local streets or stepping up to eight storeys toward Johnson Park.

The architecture utilises carefully composed and simple, long elevations, with design principles borrowed from classical buildings, framed by articulated corners. Contrasting the almost metronomic rhythm of the façades, these corners provide dynamism and interest, creating a strong identity for each of the four buildings. Expressed floor slabs serve a dual purpose, supporting the leaves of brickwork along the façade and visually breaking the building into segments by introducing a further note of play within the highly regular grid that orders the site.

Brick was chosen as the predominant material as it adds warmth, is low-maintenance and complements the neighbouring dwellings and larger buildings in the area. +

MANUFACTURER Bowral Bricks **BRICK COLLECTION** Bowral Dry Pressed - Capitol Red **BUILDER** Ceerose **CONTRACTOR** Aspect



PHOTOGRAPHER
Ross Honeysett

"The proportion and scale of this project make it elegant. It's confident, bold yet quiet, restrained and has a great sense of durability."

JURY
2019

*"Fresh, exuberant
and optimistic –
every detail of this
project is celebrated
and cared for.
A labor of love
and art."*

PHOTOGRAPHER
Sean Fennessy



THE CALILE HOTEL RICHARDS & SPENCE

Pioneering a new urban resort typology, The Calile Hotel in Brisbane by Richards and Spence is the culmination of a brick precinct that began with 19 James Street, which was recognised with a high commendation in Think Brick's 2012 Horbury Hunt Awards. With an established campus of white brick and a mature landscape, the new seven-storey hotel emerges from the existing two-storey retail streetscape. Maintaining an existing scale, double-height brick arches perform a civic duty at ground level, cloistering shoppers and framing retail identities.

The journey from the lobby to the pool cabana is a continuous outdoor experience framed in white bricks. A podium-level pool terrace takes advantage of the warm Queensland weather and assists guests to get into "holiday mode." Hidden from the street, the pool terrace offers an otherworldly experience of fluttering palm trees and striped canvas umbrellas. Conceived as elevated streets, hotel corridors continue the outdoor experience – they are naturally ventilated with customised breezeblocks and landscaping.

The hotel room balconies provide views of the pool below and enable natural ventilation. The hotel challenges a nostalgic Queensland timber-and-tin vernacular, repositioning masonry as a dignified choice for architecture in hotter climates. +

MANUFACTURER Austral Bricks
BRICK COLLECTION La Paloma - Miro
BUILDER Hutchinson Builders
CONTRACTOR La Spina, Trabucco & Co.

HIGH
COMMENDATION

— 13

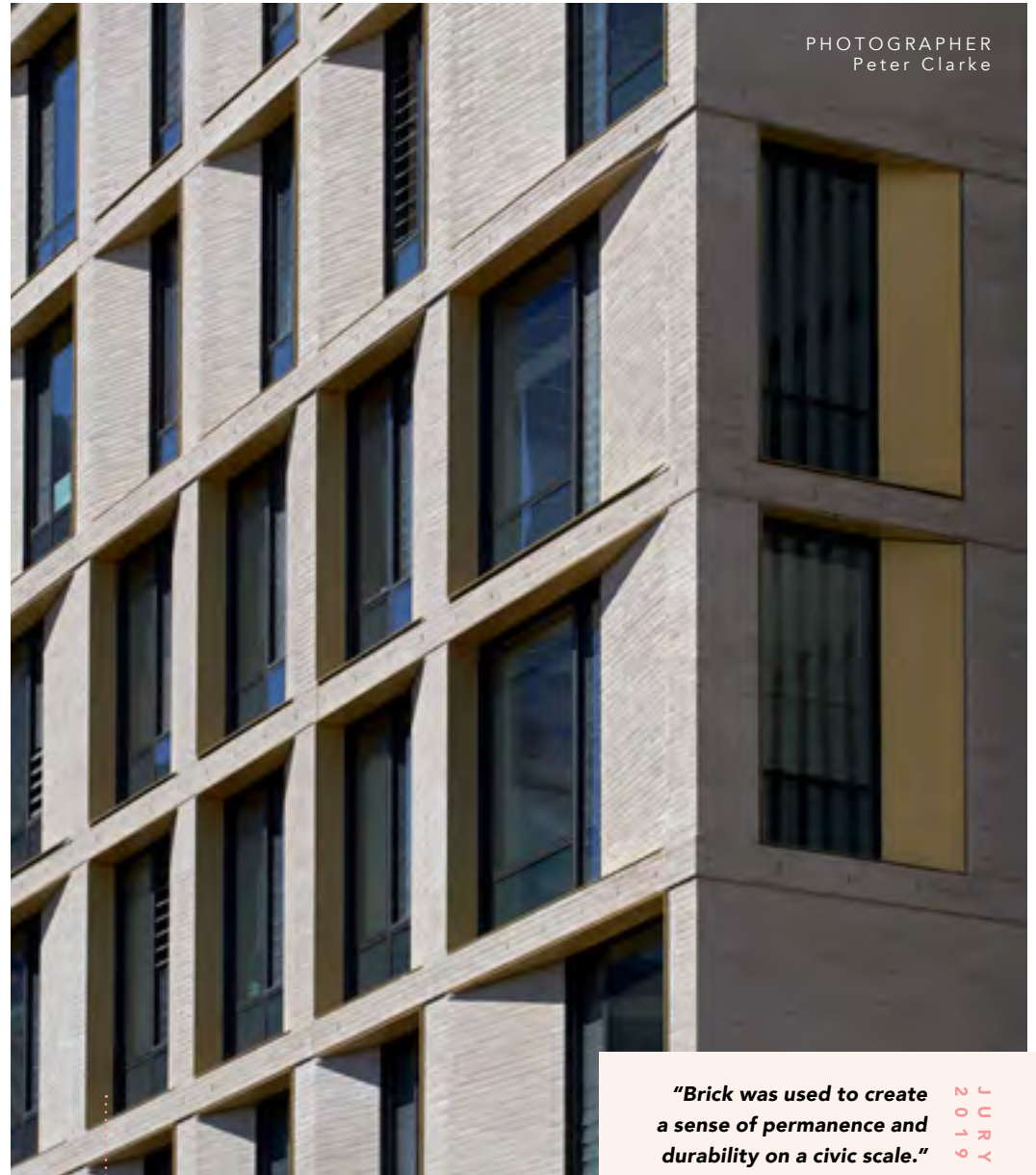
IGLU FRANKLIN STREET
BATES SMART

Occupying a prominent site in Melbourne's Queen Victoria Market precinct, Iglu Franklin Street by Bates Smart accommodates nearly 700 students in studio and cluster apartments. Generous shared spaces are designed to forge a strong sense of community and enhance the student experience. The building's two-volume massing addresses the varying scales, styles and materiality of the surrounding context. A 10-storey brick podium complements the lower-scale masonry character of Franklin Street, while the 25-storey tower – clad in an articulated glass and aluminium curtain wall – is set back from the street and aligns with the Hoddle Grid.

Slimline, light faced Simmental Silver bricks from Bowral Bricks present a masonry façade to Franklin Street. Two-storey-high splayed brickwork piers provide depth to the façade while maintaining oblique views along the street. The orientation of the brick piers is varied vertically in a playful alternating pattern that results in a strong interplay of shadow and texture across the façade. The bricks are laid horizontally in a stretcher bond pattern, with custom bricks used on the splayed corners.

The façade's depth and texture provide a strong contextual response to the historic architecture of the surrounding precinct. This architectural language extends to the interior, where face brick is used on walls and floors to provide a calm and robust backdrop to the vibrant and colourfully furnished communal spaces. +

MANUFACTURER Bowral Bricks **BRICK COLLECTION** Special Shapes -
Simmental Silver **BUILDER** Hacer **CONTRACTOR** Stuart Dent Bricklaying



PHOTOGRAPHER
Peter Clarke

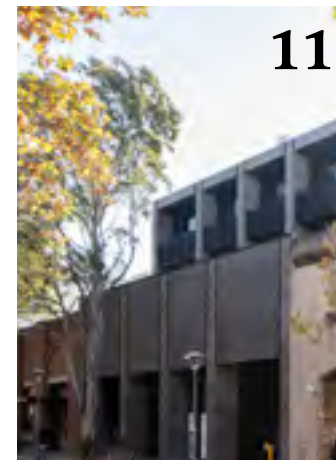
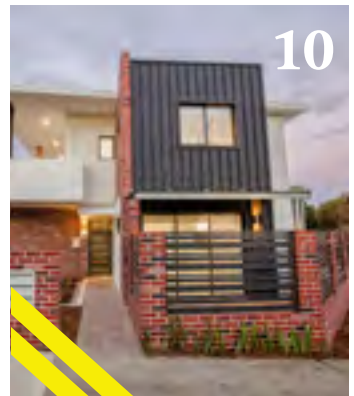
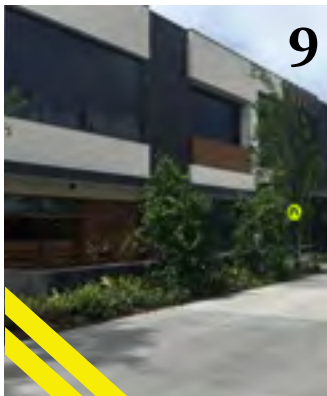
*"Brick was used to create
a sense of permanence and
durability on a civic scale."*

JURY
2019

- 1 Armstrong Creek East Community Centre
Perkins Architects
- 2 St Mary's Corner
Grieve Gillett Andersen
- 3 Barossa Valley Chocolate Company
JBG Architects
- 4 One Gordon
Candalepas Associates
- 5 Rivergum Residential Treatment Centre
Guymer Bailey Architects
- 6 Adelaide Street Townhouses
BG Architecture
- 7 Barrack Place Architectus
- 8 Powercor Network Substation W
CO-OP Studio
- 9 Westfield Coomera
Scentre Group
- 10 Murray Rd, Palmyra
M Carbone Design
- 11 Harris Street
SJB Architects

NEW ENTRANT

2019



HORNBURY
HUNT
COMMERCIAL
AWARD
ENTRANTS

— 15

1 6 —

NEW ENTRANT

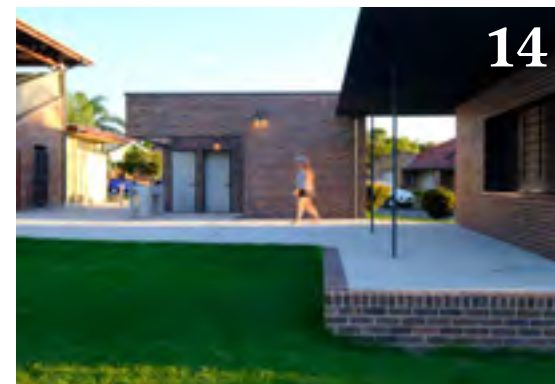
2019



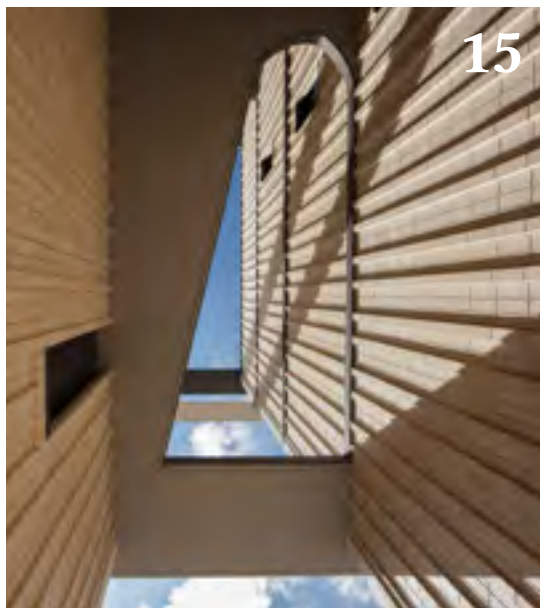
12



13



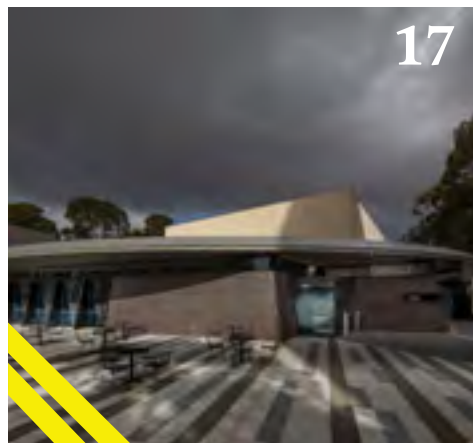
14



15



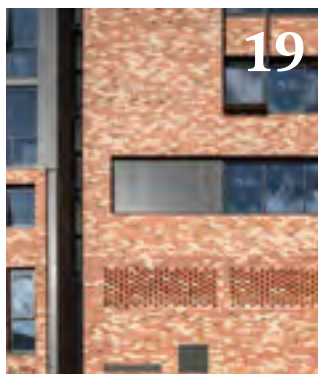
16



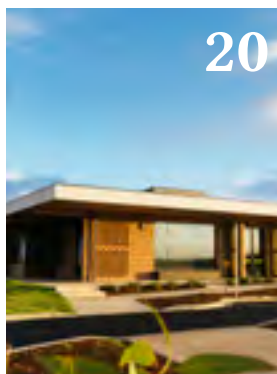
17



18



19



20



21

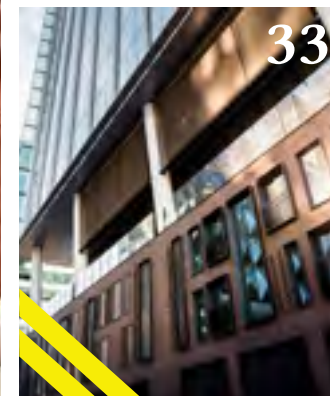
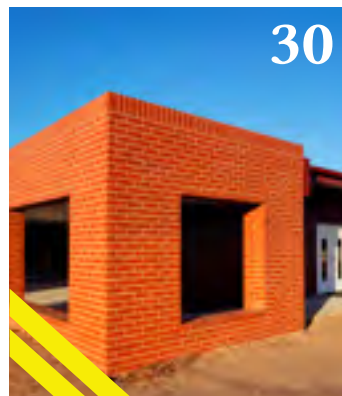
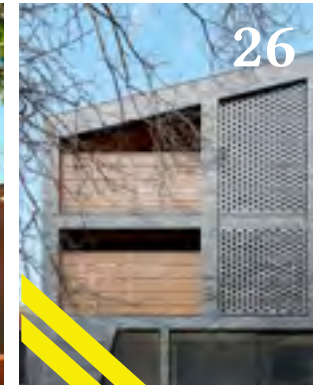
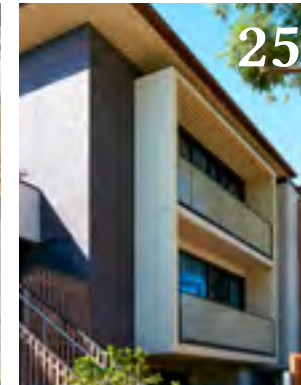


22

- 12 Anchorage Apartments
- Tectvs
- 13 Little Albion Guest House (Surry Hills Surry Hills)
- Terence Yong Architecture
- 14 Bexley Oval Amenities
- Scale Architecture
- 15 Promenade No.2 Turner
- 16 Hawthorn Bond One Design Office
- 17 The Ian Potter Centre for Performing Arts
- Peter Elliott Architecture + Urban Design
- 18 Barwon Health, DoSA & Rental Facilities. Geelong
- Billard Leece Partnership
- 19 West Franklin Apartments
- Brown Falconer
- 20 Armstrong Creek Reserve Sports Pavilion
- Perkins Architects
- 21 FRNSW Training Academy
- nettleontribe
- 22 Hills International College Classroom Block E
- Linear 56 Design

23 The Hensley
 Bayswater Apartments
 Woods Bagot
 24 Broadbeach Tavern
 Cayas Architects
 25 Bayswater Gardens
 Architectus
 26 Riversdale Rd,
 Hawthorn East
 T(A)2
 27 Duporth Building,
 Kinsford Terrace
 O'Neil Architecture
 28 Port Adelaide Office
 Building
 Walter Brooke and
 Associates
 29 Ann St, Brisbane
 John Wardle Architects
 30 Place of Possibility
 b3architects/JWP
 Architects
 31 Tigerlily Sydney
 Flagship
 Room on Fire
 32 AcquaFresca by
 PILU at Harbord
 Diggers
 Cottee Parker
 Architects
 33 One Melbourne
 Quater
 Denton Corker Marshall

NEW ENTRANT
 2019



HORBURY
 HUNT
 COMMERCIAL
 AWARD
 ENTRANTS

— 17

1 8 —

NEW ENTRANT

2019



34



35



36



37



38



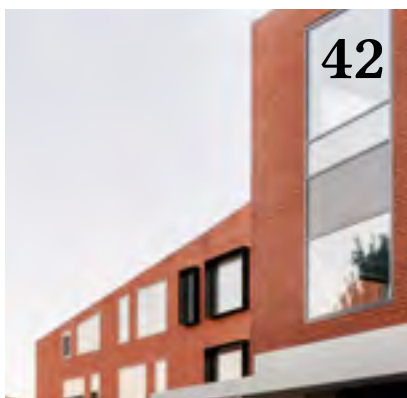
39



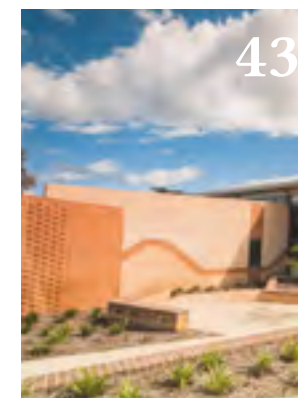
40



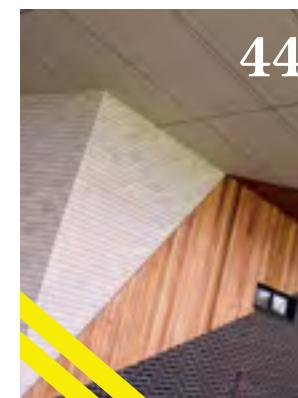
41



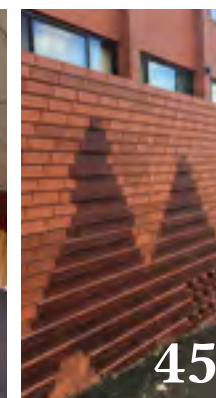
42



43



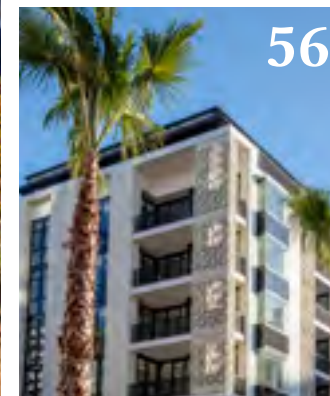
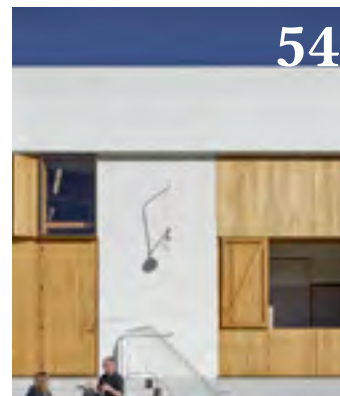
44



45

- 34 Northcote High School Performing Arts & VCE Centre
Kerstin Thompson Architects
- 35 Avenir Apartments
Jackson Clements Burrows Architects
- 36 Mercer Apartments
A Plus Group
- 37 SAINT
SJB Architects
- 38 Carlton Primary School Upgrade
Law Architects
- 39 City of Salisbury, Para Hills Community Hub
Thomson Rossi
- 40 Cranston Street Kindergarten
Cheesman Architects
- 41 Urbanest Swanston Street
Hayball
- 42 Milledge Lane
LXN Architecture
- 43 Hale Junior School
Site Architecture Studio
- 44 Jack Thomas Reserve
Programmed FM C/C
- 45 Dominic College Arts Redevelopment
Liminal Heffernan

46 Gardenvale Road
Caulfield South
Victor Anderson
Architect
47 Jellicoe Park
Amenities Building
BKA Architecture
48 Pavilion Street
SJB Architects
49 Jenny's
Kindergarten Stanmore
Nigel Merryweather
and Associates
50 LHI Community
Centre
Walter Brooke and
Associates
51 Katanning
Administration & Civic
Centre
i2C Architects
52 Corporate Fitout.
George St
Brass Tacks
53 Kings College
Lantern Architecture
54 Milani Gallery and
Studios
Vokes and Peters
55 St. Francis Xavier
Music, Dance and
Drama Facility
Bellemo & Cat
56 The Finery
Mirvac Design



HORNBURY
HUNT
COMMERCIAL
AWARD
ENTRANTS

— 19

2 0 —

HORBURY HUNT RESIDENTIAL AWARD

THINK BRICK AUSTRALIA represents Australia's clay brick and paver manufacturers.

to promoting exemplary building and landscape design using clay bricks and pavers.

Think Brick's purpose is to ensure clay brick is recognised as a pre-eminent building material by leading architects, developers, builders and property owners. We are committed

We create national campaigns to inspire designers, builders and consumers to use clay brick as a contemporary, versatile and inspiring building material.

THINK BRICK
AUSTRALIA



GB HOUSE
RENATO D'ETTORRE
ARCHITECTS

PHOTOGRAPHER Justin Alexander

HORBURY HUNT

RESIDENTIAL AWARD

THIS AWARD WAS INITIATED BY
THE HORBURY HUNT CLUB AND
BY REQUEST FROM ARCHITECTS
AND DESIGNERS

The award's purpose is to honour innovation and craftsmanship in brickwork and to recognise the contribution of architects, builders, bricklayers and manufacturers in that process.

The Horbury Hunt Residential Award category includes built residential projects that exemplify outstanding craftsmanship and innovation through the use of clay face brick and pavers. The award is named after John Horbury Hunt (1838–1904), a renowned architect who came to Australia from America in 1863. Hunt was known for introducing his distinctive and radical architecture to Sydney and rural New South Wales, including St Peter's Anglican Cathedral in Armidale, and Convent of the Sacred Heart and Tivoli in Rose Bay. +

2 2 —

HORBURY HUNT RESIDENTIAL
AWARD WINNER



MANUFACTURER PGH Bricks & Pavers/Namoi Valley Bricks **BRICK COLLECTION** Custom Made PGH Terracotta
Breeze Bricks /Architectural Range – Old Red Face **BUILDER & CONTRACTOR** Dimark Constructions

PHOTOGRAPHER
Justin Alexander

"This project does things which you don't expect with brick. It has a diaphanous, translucent quality as well as more traditional elements of mass that we expect."

GB HOUSE

RENATO D'ETTORRE
ARCHITECTS

Above the clear-blue water of Gordons Bay, this house embodies the spirit of seaside living. The design's discreet scale, quiet focus and layered materiality are sensitive to the site and neighbours and provide mystery and privacy along one of Sydney's busiest coastlines.

Once you're inside the gate, the house slowly unfolds. You see a reflection pond and hear the sound of waves as you approach the entry, where glimpses through the woven screen door reveal coastline beyond. Terracotta bricks perforated and finished in a white ceramic glaze on one side, wrap the façade like a veil, tempering views and letting the house breathe. This dynamic connection with nature continues inside, with a viewing catwalk along the double-height breezeway providing a lookout. It's a grand gesture that offers two-way privacy and a refracted play of light to the living areas below.

At the ground level, where the family gathers, the view takes in the horizon while strategically angled walls and openings for privacy and discovery lead through a series of communal, private and cosy spaces. In the main bedroom and bathroom above, this takes shape in a series of concealed peepholes for gazing out to sea. In the music room below, a subterranean rock face is bathed in natural light from above. This house was designed to enrich the daily lives of its occupants. +

2 4 —



BELLBIRD RETREAT STEENDIJK

Sitting in a pristine bushland reserve, Bellbird Retreat encourages a dialogue between man-made and natural environments. The site is susceptible to bushfires, and the designers have incorporated inspired pixilated brick blades, a glass façade and a variegated fire-resistant roof design to eliminate combustible timbers from the exterior envelope.

Sheltering the building from wind, sun and fire, the three fortress-like pivoting brick blades tie the dwelling to the earth and are crowned by a pleated steel roof, the form of which responds to topographical features. The dwelling is boldly carved into the landscape, and a boisterous play of light and shade erupts across the textural surface of the brick blades. To encourage the light play, the façade was designed with random perpend, combined with a brick protrusion and indentation of +/- 10 mm on the exterior surfaces, while internally this was reduced to +/- 5 mm, which maintains the aesthetics without the texture impacting practicalities of use.

Cleverly, only one custom brick type was required to form the angular edges of all three pivoting brick blades. The brickwork creates gravitas and an air of theatrical moodiness as it extends through the glass façades to anchor the interiors. A thermal break allows the mass of the brickwork to be utilised for thermal comfort. The project exploits brick's inherent minimal life-cycle maintenance to procure high aesthetic sensibilities and a wondrously lyrical dwelling. +

JURY
2019

"The materials in this project speak to the surrounding landscape. There is innovation in laying directions that achieve an architectural effect."

BUILDER
E.A. & P.J. Bell

HORBURY HUNT RESIDENTIAL AWARD
HIGH COMMENDATION



PHOTOGRAPHER
Christopher
Frederick Jones



PHOTOGRAPHER
Peter BennettsJURY
2019

*"An exuberant celebration of the way
masonry can interact with shadow."*

MANUFACTURER Recycled Brick
BUILDER Kleev Homes
CONTRACTOR JAM Brick

CASCADE HOUSE

ATELIER RED + BLACK

Cascade House is a contemporary extension to a solid brick inter-war home. At its core, it celebrates brick as a fundamental connection to its owners' cultural heritage. The clients are recent immigrants, and this project is strongly shaped by their experiences of growing up with brick architecture. Brick has an extensive history in the Indian sub-continent, and its chameleon-like ability to be skin, brise-soleil, thermal mass, ornament and monument is evoked across the design, with brick almost entirely cloaking the addition.

Built during the Second World War, the original home was austere with only four rooms. While sombre outside, internally it had flashes of exuberance that the clients loved, such as ceilings with radiating art-deco motifs and lace-like walls. The architect wanted to extract these elements of joy and bring them outside. A super-sized slice of the art-deco pattern has been tattooed onto the western elevation using corbelled brickwork in Flemish bond (chosen to obtain the maximum projection and shadow). This façade is intentionally quite solid to provide thermal mass, with a brise-soleil to shield the west-facing dining area – which, due to the large side setback, ends up being the public face of the extension. By choosing a raked mortar joint and a white-painted finish, the architects have been able to highlight the tumbled and chipped texture of the brick as light moves across the façade during the day. +

HIGH
COMMENDATION

— 25

BAYSIDE HOUSE

ADAM KANE ARCHITECTS

Bayside House by Adam Kane Architects, located in Melbourne's south-east, provides a timeless, holistic and effortless space for a young family to grow. As a new build in the middle of an established heritage setting, the design needed to act as a contemporary addition to the area while also remaining sympathetic to the neighbourhood. The angled brickwork of the front façade is a modern take on the traditional Edwardian gable, serving as a striking addition to the neighbourhood.

HIGH
COMMENDATION

Emperor bricks from Krause Bricks were chosen in two muted tones, their slender proportions lending sophistication and elegance to the architectural design. Used in a variety of ways, each brick is accentuated through intricate detailing to emphasise the integrity of the material. Receding at a 45-degree angle, the kink of the façade provides articulation and depth to the front face, with each brick individually shaped by hand to create a sharp corner edge. A section of hit-and-miss brick obscures the front entrance, providing privacy to the interior and allowing light and ventilation through.

The brickwork extends down the northern side of the home, and the muted palette of the Krause bricks is reflected through the interior finishes. Separated between floor-to-ceiling glazing, four brick columns wrap seamlessly between inside and out, bringing the texture and tonality of the brick inside, where it is combined with polished plaster and white-washed floorboards to create a refined and effortless aesthetic. +

MANUFACTURER Krause Bricks **BRICK COLLECTION** Emperor 380mm - Ghost **BUILDER** Hardwick Build Co **CONTRACTOR** Newmac Bricklaying



PHOTOGRAPHER
Tom Blachford

"The single use of the material is austere; the bricks are non-linear, and this is extremely difficult to achieve."

JURY
2019

JURY
2019

"Elegant, sophisticated and refined, this project achieves warmth through its cohesive palette of materials."

THINK BRICK
AWARDS
2019

BALMORAL HOUSE CHROFI



Balmoral House by CHROFI works as a series of stacked, interconnected brick volumes that carefully manoeuvre down the site, wrapping around a secluded light-filled courtyard and terrace area to create an array of connected interior and exterior spaces. The site presented numerous challenges, as it is wedge-shaped, located on the low side of the street, hemmed in by two substantial existing houses and just half the land area of its neighbours. To unlock the site, the architects subverted the obvious strategy of using elevated living space with a balcony facing the view, to instead place the living areas on the lower-ground level to open up oblique views to Balmoral Beach and Rocky Point Island beyond. The design process was focused on finding a sense of delight where, on the first inspection, there appeared to be little. The use of brick was a key strategy used to reinforce the flow between inside and outside and is a common, tactile thread running through the building. +



PHOTOGRAPHER
Katherine Lu

MANUFACTURER Austral Bricks
BRICK COLLECTION San Selmo
Corso - Brenta (Raw) **BUILDER** FS Hough
CONTRACTOR The Country Group

HIGH
COMMENDATION

— 27

2 8

- 1 Curragan Residence
Klopper & Davis
Architects
- 2 The Bridgewater
Synergy Designs
- 3 Herford Street.
Botany
Pinnacle Plus
- 4 Ashton Residence
Koppler & Davis
Architects
- 5 Catherine House
ITN Architects
- 6 Zuster House
Bijl Architecture
- 7 The Richmond
Windamere Homes
- 8 Hampton Farm
Shaun Lockyer
Architects
- 9 Daylesford
Longhouse
Partners Hill
- 10 The Manor on
Coogee
KTR Creations
- 11 The Residence for a
Master Mason
FPPV Architecture

NEW ENTRANT

2019



1



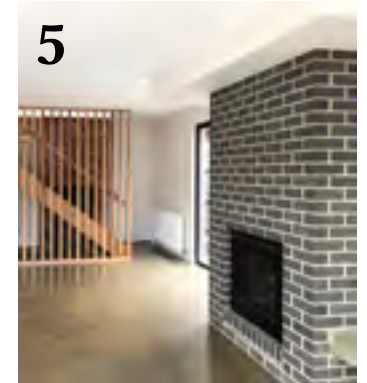
2



3



4



5



6



7



8



9



10



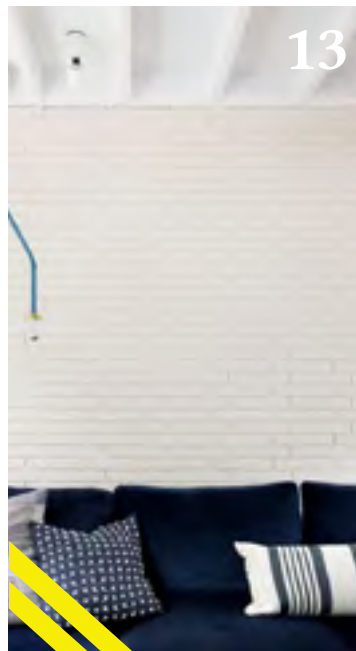
11

HORBURY
HUNT RESIDENTIAL
AWARD
ENTRANTS

HORNBURY
HUNT
RESIDENTIAL
AWARD
ENTRANTS



12



13



14



15



17



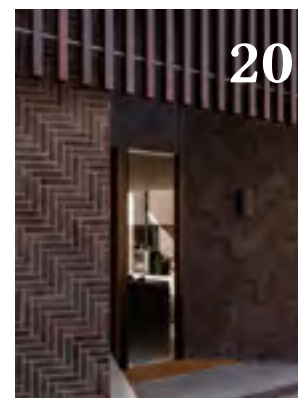
18



19



16



20



21



22

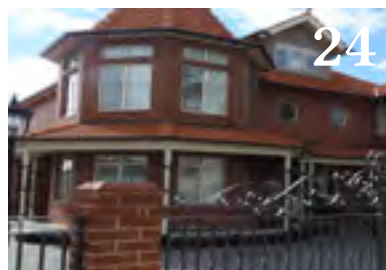
12 Fairlight Addition
Michelle Walker
Architects
13 Highcliff, Hunters
Hill
Celia Carroll Architect
14 The Nazarre
BGC Residential
15 Boundary St House,
Port Melbourne
Chan Architecture
16 Upper Cairns House
Tim Stewart Architects
17 Inverloch Residence
Michael Ellis Architects
18 Heydon
ES Design
19 Subiaco House
Vokes and Peters
20 Circe Circle
Residence
Mountford Architects
21 Brigadoon Home
SHARP + VAN RHYN
ARCHITECTS
22 Strickland Ave
House
Dock4 Architects

30

23 Brisbane Riverbank House
Owen Architecture
24 Astoria
Faraday Homes
25 Autumn Residence
BayleyWard
26 Princess Street House
Owen Architecture
27 House in Darlinghurst
Tribe Studio
28 Tudor Revival
Warc Studio
29 409
Cykel Architecture
30 Lewis Robertson Residence
Klopper & Davis Architects
31 Pateena Road
HONED ARCHITECTURE + DESIGN
32 Montgomery Residence
Klopper & Davis Architects
33 Asgard Place
HONED ARCHITECTURE + DESIGN
34 Photo Mosaic House
ONE20



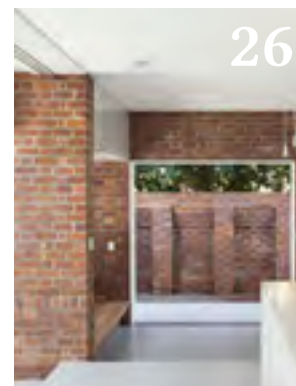
23



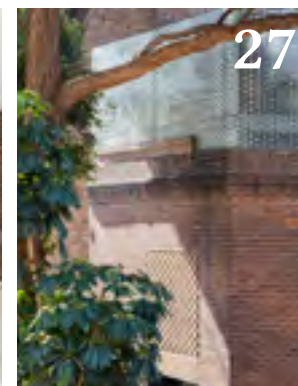
24



25



26



27



28



29



32



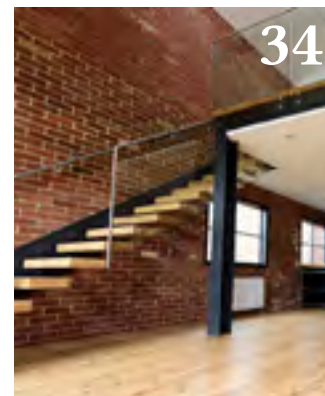
33



30



31



34

HORBURY
HUNT
RESIDENTIAL
AWARD
ENTRANTS

NEW ENTRANT

2019



35



36



37



38



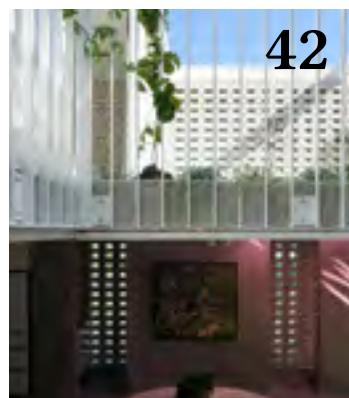
39



40



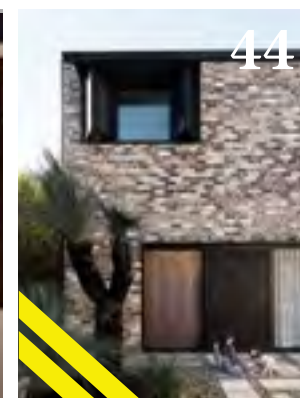
41



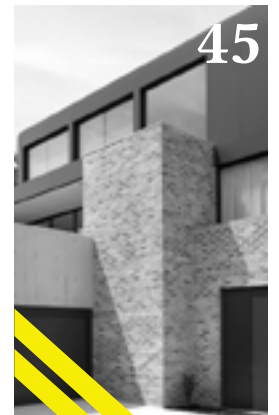
42



43



44



45

- 35 Crisp McQuoid Residence
Klopper & Davis Architects
- 36 Howard
Tim Stewart Architects
- 37 Kelsey Street
Coorparoo
Harry Peterson Architect
- 38 Penguin House
S. Group
- 39 Palmyra II
Turner
- 40 Fitzroy Terrace
Taylor Knights
- 41 London House
Castle Glenn Homes
- 42 Arthur Street House
James Russell Architect
- 43 Port Geographe House
ProLiving
- 44 Courtyard House
Youssofzay and Hart
- 45 Forrest Residence
Mathieson Architects

1 Armstrong Creek East Community Centre Perkins Architects

M: Daniel Robertson / Bowral Bricks
P: The Avenue - Stratton / Bowral Dry Pressed - Bowral Blue

C: Caruso Bricklaying
2 St Mary's Corner Grieve Gillett Andersen
M: Austral Bricks
P: Urban One Range
C: KB Bricklayers

3 Barossa Valley Chocolate Company JBG Architects
M: Bowral Bricks
P: Bowral Dry Pressed - Chillingham White, Bowral Blue, Braham Granite

C: D&Z Bricklaying
4 One Gordon Candalepas Associates
M: Bowral Bricks
P: Bowral Dry Pressed - Chillingham White
C: TP Projects

5 Rivergum Residential Treatment Centre Guymer Bailey Architects
M: Bowral Bricks / Austral Bricks / Nubrik
P: Bowral Dry Pressed Range / Burlesque Range / Pressed Bricks - Chapel Red
C: Lawler Bricklaying

6 Adelaide Street Townhouses BG Architecture
M: Daniel Robertson / Austral Bricks
P: Traditional - Red

Blend, Hawthorn - Hawthorn Black / Melbourne - Canterbury, La Paloma - Gaudi
C: Stuart Dent Bricklaying
7 Barrack Place Architectus

M: Bowral Bricks
P: Bowral Dry Pressed - Bowral Brown
C: Fugen

8 Powercor Network Services Zone Substation W CO-OP Studio
C: Hacer Group

9 Westfield Coomera Scentre Group
M: Austral Bricks
P: La Paloma - Miro & Gaudi

C: North Australian Contracting
10 Murray Rd, Palmyra M Carbone Design

M: Brikmakers
P: Traditional Brick Collection - Vintage Red Tumbled
C: InBrick

11 Harris Street SJB Architects
M: Bowral Bricks
P: Bowral Dry Pressed - Bowral Blue

C: R&K Constructions
12 Anchorage Apartments Tectvs
M: Austral Bricks
P: Melbourne - Canterbury, Melbourne 76 Series - Hawthorn

C: LJP Masonry
13 Little Albion Guest House (Surry Hills Surry Hills)

Billard Leece

Hills) Terence Yong Architecture
M: Austral Bricks
P: Burlesque - Indulgent White
C: Top Knot Carpentry And Joinery

14 Bexley Oval Amenities Scale Architecture
M: Bowral Bricks
P: Bowral Dry Pressed - Renovation Gertrudis Brown

15 Promenade No.2 Turner
M: Bowral Bricks
P: Bowral 50 - Chillingham White, Simmental Silver, Brahman Granite

C: Probuild
16 Hawthorn Bond One Design Office
M: PGH Bricks & Pavers

P: Distinctively Melbourne - Eaglemont
C: Stelcon Building

17 The Ian Potter Centre for Performing Arts Peter Elliott Architecture + Urban Design
M: Austral Bricks / Bowral Bricks / PGH Bricks & Pavers

P: La Paloma - Miro / Bowral Dry Pressed - Bowral Blue / Choc Fudge (Smooth) - Smooth
C: Mulgrave Bricklaying & Building Contractors / Byrne Construction Systems

18 Barwon Health, DoSA & Rental Facilities. Geelong Billard Leece

19 West Franklin Apartments Brown Falconer
M: PGH Bricks & Pavers
P: Manhattan - Tribeca

C: Total Brickwork Solutions
20 Armstrong Creek Reserve Sports Pavillion Perkins Architects
M: Austral Bricks / Nubrik

P: La Paloma - Gaudi / Pressed Bricks - Burwood Blue
C: GJ Reid Bricklaying

21 FRNSW Training Academy nettletontribe
M: PGH Bricks & Pavers
P: Dry Pressed Architectural - Macarthur Mix

C: Macarthur Bricklaying Services
22 Hills International College Classroom Block E Linear 56 Design
M: Daniel Robertson / Nubrik

P: Traditional - Red / Pressed Bricks - Chapel Red
C: Coastal Masonry Constructions
23 The Hensley Apartments Woods

Partnership

M: Austral Bricks / Nubrik
P: Access - Ash / Artisan Range - Avalanche, Indulgence Range - Biscotti

C: Caruso Bricklaying
19 West Franklin Apartments Brown Falconer
M: PGH Bricks & Pavers

P: Manhattan - Tribeca
C: Total Brickwork Solutions
20 Armstrong Creek Reserve Sports Pavillion Perkins Architects

M: Austral Bricks / Nubrik
P: La Paloma - Gaudi / Pressed Bricks - Burwood Blue
C: GJ Reid Bricklaying

21 FRNSW Training Academy nettletontribe
M: PGH Bricks & Pavers
P: Dry Pressed Architectural - Macarthur Mix

C: Macarthur Bricklaying Services
22 Hills International College Classroom Block E Linear 56 Design
M: Daniel Robertson / Nubrik

P: Traditional - Red / Pressed Bricks - Chapel Red
C: Coastal Masonry Constructions
23 The Hensley Apartments Woods

M: PGH Bricks & Pavers
P: Dry Pressed Architectural - Macarthur Mix
C: Macarthur Bricklaying Services

22 Hills International College Classroom Block E Linear 56 Design
M: Daniel Robertson / Nubrik
P: Traditional - Red / Pressed Bricks - Chapel Red

C: Coastal Masonry Constructions
23 The Hensley Apartments Woods

M: PGH Bricks & Pavers
P: Dry Pressed Architectural - Macarthur Mix
C: Macarthur Bricklaying Services

22 Hills International College Classroom Block E Linear 56 Design
M: Daniel Robertson / Nubrik
P: Traditional - Red / Pressed Bricks - Chapel Red

C: Coastal Masonry Constructions
23 The Hensley Apartments Woods

M: PGH Bricks & Pavers
P: Dry Pressed Architectural - Macarthur Mix
C: Macarthur Bricklaying Services

Bagot

M: PGH Bricks & Pavers
P: Dry Pressed Architectural Linear - Balmerino Blend

C: Matzo Co Construction
24 Broadbeach Tavern Cayas Architects

M: Austral Bricks
P: La Paloma - Miro
C: 1 on 2 Bricklaying

25 Bayswater Gardens Architectus
M: Bowral Bricks
P: Bowral Dry Pressed - Chillingham White, Bowral Blue

C: Favetti Bricklaying
26 Riversdale Rd, Hawthorn East T(A)2
M: Austral Bricks

P: La Paloma - Azul
C: Mordy Brick
27 Duporth Building, Kinsford Terrace O'Neil Architecture

M: Bowral Bricks
P: Bowral Dry Pressed - Chillingham White
C: Construction Worx

28 Port Adelaide Office Building Walter Brooke and Associates
M: Bowral Bricks / Austral Bricks
P: Bowral Dry Pressed - Bowral Blue & Gertrudis Brown / Governors - Wakehurst

C: Dolan Tiling
29 Ann St, Brisbane John Wardle Architects
M: Bowral Bricks

P: Bowral Dry Pressed - Bowral Blue, Gertrudis

C: Dolan Tiling
29 Ann St, Brisbane John Wardle Architects
M: Bowral Bricks

P: Bowral Dry Pressed - Bowral Blue, Gertrudis

C: Dolan Tiling
29 Ann St, Brisbane John Wardle Architects
M: Bowral Bricks

P: Bowral Dry Pressed - Bowral Blue, Gertrudis

Brown, Simmental Silver
C: SRC Bricklaying and Landscaping

30 Place of Possibility b3architects/JWP Architects
M: Nubrik
P: Pressed Bricks - Chapel Red

C: Oasis Scaffolding & Bricklaying
31 Tigerlily Sydney Flagship Room on Fire
M: Bowral Bricks

P: Bowral Dry Pressed - Chillingham White
C: Able Bricklaying
32 AcquaFresca by PILU at Harbord Diggers Cottee Parker Architects

M: Austral Bricks
P: San Selmo Corso - Potenza (Raw)
C: PKJ Services

33 One Melbourne Quater Denton Corker Marshall
M: Daniel Robertson
P: Hawthorn - Black

C: Byrne Construction Systems
34 Northcote High School Performing Arts & VCE Centre Kerstin Thompson Architects

M: Krause Bricks
P: Standard 76mm - Heritage Red
C: Four SQ

35 Avenir Apartments Jackson Clements Burrows Architects
M: Austral Bricks
P: Metallix - Bronze

36 Mercer Apartments A Plus

37 SAINT SJB Architects
M: Austral Bricks
P: Industrial - Steel, Melbourne - Canterbury, Access - Ash

C: Trio Construct
38 Carlton Primary School Upgrade Law Architects
M: Nubrik
P: Pressed Bricks - Chapel Red

C: McGaw Constructions
39 City of Salisbury, Para Hills Community Hub Thomson Rossi
M: Austral Bricks
P: Hallett Renovators - Vintage Red

C: RDR Bricklaying
40 Cranston Street Kindergarten Cheesman Architects
M: Austral Bricks
P: Burlesque - Smashing Blue
C: Nick Steel Bricklaying

41 Urbanest Swanston Street Hayball
M: Daniel Robertson
P: Hawthorn - Black
C: Deca Constructions

42 Milledge Lane LXN Architecture
M: Austral Bricks / Nubrik
P: Homestead - Red / Artisan - Avalanche, Pressed Bricks - Chapel Red

C: All Brick Tasmania
43 Hale Junior

44 Jack Thomas Reserve Programmed FM C/C City of Casey
M: Austral Bricks / PGH Bricks & Pavers
P: Burlesque - Indulgent White / Seascape - Seasalt

C: McPherson Bricklaying
45 Dominic College Arts Redevelopment Liminal Heffernan
M: Austral Bricks
P: Symmetry - Red, Bespoke Made - Liminal Lava

46 Gardenvale Road Caulfield South Victor Anderson
M: Krause Bricks / Austral Bricks
P: Standard Brick Range - Heritage Red / La Paloma - Gaudi

C: Hawthorn Bricklaying
47 Jellicoe Park Amenities Building BKA Architecture
C: Pride Bricklaying

48 Pavilion Street SJB Architects
M: Krause Bricks
P: Emperor 380mm - Ghost
C: Impero Pacific Group

49 Jenny's Kindergarten Stanmore Nigel Merryweather and Associates
M: PGH Bricks & Pavers

50 LHI Community Centre Walter Brooke and Associates
M: Bowral Bricks
P: Bowral Dry Pressed - Gertrudis Brown

C: Treestone
51 Katanning Administration & Civic Centre i2C Architects
C: Tyrone Group

52 Corporate Fitout, George St Brass Tacks
M: PGH Bricks & Pavers
P: Morada Linear - Blanco

C: Jana Bricklayers
53 Kings College Lantern Architecture
M: Midland Brick
P: Contempo Madrid - Contempo Madrid Blanco

C: Badge Construction
54 Milani Gallery and Studios Vokes and Peters
M: PGH Bricks & Pavers

P: Smooth - Smoke
C: Empire Ceramics
55 St. Francis Xavier Music, Dance and Drama Facility Bellemo & Cat
C: Macquarie Precast

56 The Finery Mirvac Design
M: Austral Bricks
P: Hamlet - Hamlet Blue, La Paloma - Miro

C: Fugen Constructions

57 Dry Pressed Architectural - Macarthur Mix, Urban Metal - Bronze Sheen Architectural

58 LHI Community Centre Walter Brooke and Associates
M: Bowral Bricks
P: Bowral Dry Pressed - Gertrudis Brown

C: Treestone
51 Katanning Administration & Civic Centre i2C Architects
C: Tyrone Group

52 Corporate Fitout, George St Brass Tacks
M: PGH Bricks & Pavers
P: Morada Linear - Blanco

C: Jana Bricklayers
53 Kings College Lantern Architecture
M: Midland Brick
P: Contempo Madrid - Contempo Madrid Blanco

C: Badge Construction
54 Milani Gallery and Studios Vokes and Peters
M: PGH Bricks & Pavers

P: Smooth - Smoke
C: Empire Ceramics
55 St. Francis Xavier Music, Dance and Drama Facility Bellemo & Cat

C: Macquarie Precast
56 The Finery Mirvac Design
M: Austral Bricks

P: Hamlet - Hamlet Blue, La Paloma - Miro

C: Fugen Constructions

57 Dry Pressed Architectural - Macarthur Mix, Urban Metal - Bronze Sheen Architectural

58 LHI Community Centre Walter Brooke and Associates

M: Bowral Bricks
P: Bowral Dry Pressed - Gertrudis Brown

C: Treestone
51 Katanning Administration & Civic Centre i2C Architects
C: Tyrone Group

52 Corporate Fitout, George St Brass Tacks
M: PGH Bricks & Pavers
P: Morada Linear - Blanco

C: Jana Bricklayers

HORBURY HUNT RESIDENTIAL AWARD ENTRANTS INDEX

— 3 3

1 Currihan Residence
Klopper & Davis
Architects
P: Recycled Brick
2 The Bridgewater
Synergy Designs
M: Austral Bricks
P: San Selmo
Smoked - Opaque
Slate, Urban One -
Chiffon
C: David Burke
Bricklaying
3 Herford Street.
Botany Pinnacle Plus
M: Austral Bricks /
Bowral Bricks
P: La Paloma - Miro
/ Bowral Dry Pressed
- Bowral Blue
C: H Built
Constructions
4 Ashton Residence
Koppler & Davis
Architects
M: Bowral Bricks
P: Bowral 50 -
Gertrudis Brown
5 Catherine House
ITN Architects
M: Austral Bricks
P: Industrial - Iron
C: MMD
Construction

6 Zuster House Bijl
Architecture
M: PGH Bricks &
Pavers
P: Dry Pressed
Architectural - Black
Beauty
C: Team Nomad
7 The Richmond
Windamere Homes
M: Austral Bricks
P: La Paloma -
Gaudi & Miro, Urban
One - Chiffon, San
Selmo Smoked -
Opaque Slate
C: Damien
Schurmann
Bricklaying
8 Hampton Farm
Shawn Lockyer
Architects
M: PGH Bricks &
Pavers
P: Smooth - Black
and Tan
9 Daylesford
Longhouse Partners
Hill
M: Austral Bricks
P: Burlesque -
Indulgent White
C: Elvis & Rose

10 The Manor on
Coogee KTR Creations
M: Midland Brick
P: Handmade -
Sandalford
C: Premium
Developments
11 The Residence
for a Master Mason
FPPV Architecture
M: Daniel Robertson
P: Traditional -
Apricot
C: Northern
Bricklaying and
Carpentry
12 Fairlight Addition
Michelle Walker
Architects
M: Namoi Valley
Bricks
P: Architectural
Range - Federation
Red
C: GT Mahoney
Bricklaying
13 Highcliff, Hunters
Hill Celia Carroll
Architect
M: PGH Bricks &
Pavers
P: Morada Linear
- Blanco, Seascape -
Sea Salt Split

C: Peter Best
Constructions
14 The Nazare BGC
Residential
M: Brikmakers
P: Revival Brick
Collection - Treasury
Red, Feature Bricks -
Byford Red
C: National Homes
15 Boundary St
House, Port Melbourne
Chan Architecture
P: Recycled Brick
C: Made
Constructions
16 Upper Cairns
House Tim Stewart
Architects
M: PGH Bricks &
Pavers
P: Pure Linens -
Pebble Creek
17 Inverloch Residence
Michael Ellis Architects
M: Austral Bricks
P: La Paloma - Miro
C: Johnston S H
& K J
18 Heydon ES Design
M: PGH Bricks &
Pavers
P: Crafted
Sandstocks - Lawson

Blend
C: BWB Contracting
19 Subiaco House
Vokes and Peters
M: Midland Brick
P: Commons -
Commons
C: P + D Bricklaying
20 Circe Circle
Residence Mountford
Architects
M: Bowral Bricks
P: Bowral Dry
Pressed - Bowral
Blue
21 Brigadoon Home
SHARP + VAN RHYN
ARCHITECTS
M: Midland Brick
P: Handmade -
Woodbridge (PSR)
C: Grandview
Constructions
22 Strickland
Ave House Dock4
Architects
M: Daniel Robertson
P: Hawthorn - Red
C: Kevin Moorcroft
Bricklayer
23 Brisbane Riverbank
House Owen
Architecture
M: PGH Bricks &

Pavers
P: Smooth - Copper
Glow
24 Astoria Faraday
Homes
M: Nubrik
P: Pressed Bricks -
Chapel Red
C: Faraday Homes
25 Autumn Residence
BayleyWard
C: Poyser
Constructions
26 Princess Street
House Owen
Architecture
M: PGH Bricks &
Pavers
P: Smooth - Black
and Tan
27 House in
Darlinghurst Tribe
Studio
M: Austral Bricks
P: Bowral Bricks -
Bowral Brown
C: Heritage Masonry
28 Tudor Revival Warc
Studio
P: Recycled Brick
29 409 Cykel
Architecture
M: Daniel Robertson
P: Hawthorn - Red

30 Lewis Robertson
Residence Klopper &
Davis Architects
M: Midland Brick
P: Georgian Range -
Granite Sett
C: Peter Konowolow
Bricklaying
31 Pateena
Road HONED
ARCHITECTURE +
DESIGN
P: Recycled Brick
C: Martin Jordan
Bricklaying
32 Montgomery
Residence Klopper &
Davis Architects
M: Geraldton Brick
P: Face Brick Range
- Governor Sterling
33 Asgard
Place HONED
ARCHITECTURE AND
DESIGN
P: Recycled Brick
C: Matty Cameron
Bricklayer
34 Photo Mosaic
House ONE20
P: Recycled Brick
35 Crisp McQuoid
Residence Klopper &
Davis Architects

P: Recycled Brick
36 Howard Tim
Stewart Architects
M: PGH Bricks &
Pavers
P: Morada - Blanco
37 Kelsey Street
Coorparoo Harry
Peterson Architect
M: PGH Bricks &
Pavers
P: Smooth - Black
and Tan & Copper
Glow, Dry Pressed
Architectural Range
- Mowbray Blue,
Macarthur Mix,
Hawkesbury Bronze
C: Trojan Bricklaying
38 Penguin House
S. Group
P: Recycled Brick
C: MODA
39 Palmyra II Turner
M: Bowral Bricks
P: Bowral
Dry Pressed -
Chillingham White
40 Fitzroy Terrace
Taylor Knights
P: Recycled Brick
C: GD Hughs
41 London House
Castle Glenn Homes

M: Austral Bricks
P: San Selmo
Reclaimed -
Reclaimed Original
42 Arthur Street House
James Russell Architect
M: Austral Bricks
P: Urban One
- Snow, Metallix -
Ghost, La Paloma
- Miro
C: Dean O'Neil
Bricklaying
43 Port Geographe
House ProLiving
M: Austral Bricks
P: San Selmo
Reclaimed -
Reclaimed Original
44 Courtyard House
Youssofzay and Hart
P: Recycled Brick
C: John Sullivan
Bricklaying
45 Forrest Residence
Mathieson Architects
M: Austral Bricks
P: San Selmo
Smoked - Opaque
Slate
C: Bloc (ACT)

BRUCE MACKENZIE LANDSCAPE AWARD ENTRANTS INDEX

1 ANU Daley
Rd Harris Hobbs
Landscapes
M: Adbri Masonry
P: Paving - Trihex
C: Glascott
Landscape & Civil
2 Mount Majura
Estate Redbox
Design Group
M: Adbri Masonry
P: Paving - Trihex
C: Chincivil
3 Tenerife House
Vokes and Peters
M: PGH Bricks &

Pavers
P: Smooth -
Terracotta
C: Phuony Tiling
4 Curtin Central
Bus Interchange
Coniglio Ainsworth
Architects
M: Urbanstone
P: Engineered
Series - RSGC
600x300 Milled
& Largo 600x300
Milled
C: JBC Barrett
Construction

5 Epicure
Residence Kincaid
Developments
M: Adbri Masonry
P: Paving -
Ecotrihex
C: Adbri Masonry
6 ANU Union
Court Aspect
Studios collab.
with Lahznimmo
Architects
M: Adbri Masonry
P: Paving - Bipave
C: Trihex
C: Able

Landscapes
7 Penguin Parade
Wood & Grieve
Engineers
M: Adbri Masonry
P: Paving -
Ecotrihex
C: Adbri Masonry
8 The Brook
Community
Pavilion, Bayford
PLAN E Landscape
Architects
P: Recycled Brick
C: Urbaneering &
Paving Solutions

9 Kent Town
Revitalisation
Oxygen Architects
M: Boral Masonry
P: Longo -
Charcoal & Oyster
C: Outside Ideas
10 Heydon ES
Design
M: PGH Bricks &
Pavers
P: Crafted
Sandstocks -
Lawson Blend
C: BWB
Contracting

11 Townsville
Casino
Woods Bagot
M: Adbri Masonry
P: Paving - Euro
Classic (Custom
Fleece Colour)
C: Sariascape
Retaining Walls &
Paving
12 City Beach
Residential College
Iredale Pedersen
Hook Architects with
CAPA
M: Austral

Masonry
P: GB Smooth -
Limestone
C: Tyrone Group
13 Seniors Living
Penrith Arterra
Design - Landscape
Architects
M: Adbri Masonry
P: Paving - Euro
Stone
C: Open Tiling
14 Australian
Technology Park
Public Domain
ASPECT Studios

M: Bowral Bricks
P: Special Shapes
- Bowral Blue,
Sepia, Ash
C: Glascott
Landscape & Civil
15 Brigadoon
Home SHARP
+ VAN RHYN
ARCHITECTS
M: Midland Brick
P: Handmade
- Woodbridge
(PSR)
C: Grandview
Constructions

16 Shepparton
Law Court
Redevelopment
Architectus
M: Bowral Bricks
P: Bowral Dry
Pressed - Capitol
Red & Braham
Granite (Bowral
Shapes)
C: Caruso
Bricklaying
17 Roy Marten Park,
Taperoo Outerspace
Landscape
Architects

M: Urbanstone
P: Engineered
Series - Rocky
Road Milled &
Honed
C: LCS
Landscapes
18 Aquire
Apartments Zegna
M: Brikmakers
P: Granite Paving
Collection -
Tundra, Sea Mist,
Storm Cloud

Continued on page 68

3 4 —

BRUCE MACKENZIE LANDSCAPE AWARD

CMAA
CONCRETE MASONRY
ASSOCIATION OF AUSTRALIA


CONCRETE
MASONRY
ASSOCIATION OF
AUSTRALIA

THINK BRICK
AUSTRALIA

THINK
BRICK
AUSTRALIA

DOUBLEGROUND
MUIR ARCHITECTURE +
OPENWORK

PHOTOGRAPHER
Peter Bennetts



SUBIACO HOUSE
VOKES AND PETERS

THINK BRICK
AWARDS
2019

BRUCE MACKENZIE

LANDSCAPE
AWARD

THIS AWARD WAS PREVIOUSLY
PART OF THE HORBURY HUNT
AWARD AND IN 2013, EVOLVED TO
INCLUDE CONCRETE MASONRY.
IN 2014 THIS AWARD WAS NAMED
AFTER RENOWNED AUSTRALIAN
LANDSCAPE ARCHITECT BRUCE
MACKENZIE AM.

Bruce Mackenzie is responsible for some of Australia's greatest landscape projects, spanning over five decades. He has designed numerous Australian landmarks and has won many design awards, highlighting his great contribution to the landscape design community. In 2011 he wrote and published *Design With Landscape*, his fifty-year journey through landscape architecture. Mackenzie was a founding member of the Australian Institute of Landscape Architects (AILA) and has been a state and national president. He was presented with the AILA Award in Landscape Architecture in 1986, and in June 1999 on the occasion of the Queens Birthday honours list, he was made a member of the Order of Australia (AM). +

PHOTOGRAPHER
Christopher Frederick Jones

MANUFACTURER Bowral Bricks
BRICK COLLECTION Bowral Dry Pressed -
Capitol Red **CONTRACTOR** **Consultant/Engineer:**
Irwinconsult **Subcontractors:** DGB Projects, Programmed,
Show Works, Charles Sandford and Higgins

"Brick is used as a tapestry to weave within the confines and context of the art gallery space. It's surprising in its context and is a generous public gesture."

DOUBLEGROUND

MUIR ARCHITECTURE +
OPENWORK

Doubleground is the 2018 National Gallery of Victoria (NGV) Architecture Commission, designed by Muir Architecture and landscape architecture studio Openwork. The intervention challenges the role of the Grollo Equiset Garden in which it is located by using collage as a tool for stitching together a formal memory of the original NGV building designed by Roy Grounds.

Embedding itself within the existing condition, Doubleground celebrates the garden for what it is and for what it can be. A familiar language defines a new spatial memory imbued with that of the architecture of Roy Grounds. The new spatial condition provides spaces for the body: the room, the corridor and the field. Each wall is accompanied by a fold in the topography of the garden that creates a double ground.

Red bricks define the central space of the commission, creating an unexpected material, texture and colour in the garden that invites the visitor to slow down and notice the congregation of existing trees. Providing room to rest, the bricks are also used as seats, completing the folds of the walls and supporting the new topography of the collaged double ground. +

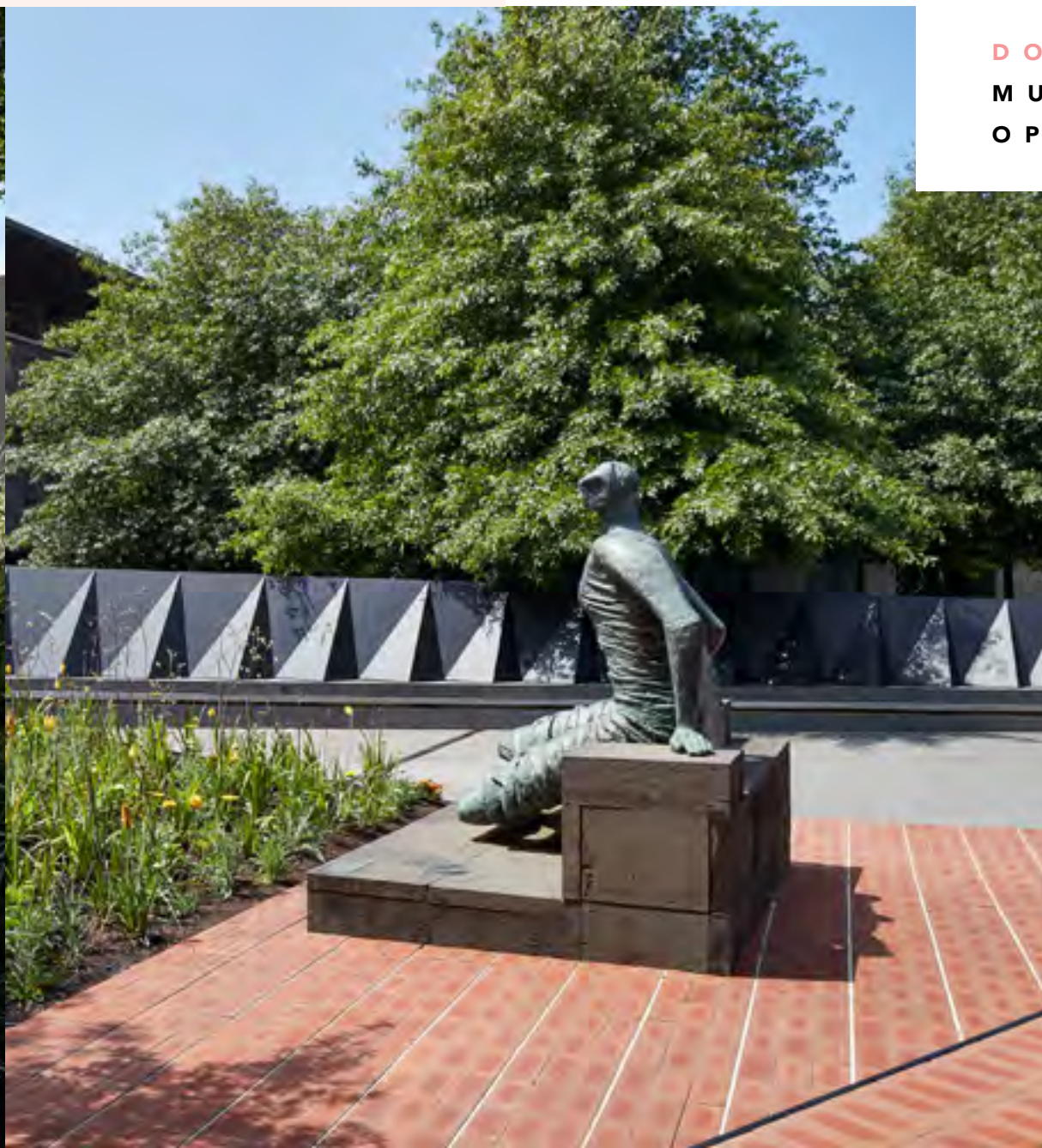
NEW ENTRANT

2019



WINNER 2019

— 37



SUBIACO HOUSE VOKES AND PETERS

Subiaco House is a new family home in the leafy suburb of Subiaco, Western Australia. The house occupies a prominent corner lot that had long been left a vacant lawn. The clients were keen to build a generous house that would allow them to engage with the community, and that was sensitive to the established character of the streetscape.

HIGH COMMENDATION

The design by Vokes and Peters fulfils this ambition by planning the new home around a courtyard garden that is positioned between the building and the street. The courtyard garden offers the amenity of private open space to the occupants, as well as maintaining a privacy buffer that allows the family to remain engaged with the street while also being able to withdraw to more private parts of the house. The courtyard enables the building to contribute open space, vegetation and human occupation to the street, along with a degree of visual permeability through the corner site.

Brick masonry walls have been used to form the garden walls and outdoor fireplace. These elements are painted white to offer a neutral backdrop to the surrounding vegetation and terracotta tile roofing. Inlaid brick flooring softens outdoor entertaining spaces and paths by introducing a hand-laid, tactile surface to the material palette. This flooring material is used both internally and externally, emphasising the continuity between enclosed and semi-enclosed living spaces. +

MANUFACTURER Brikmakers **BRICK COLLECTION**
Lloyd Wright Brick Collection - Michigan Red **BUILDER** Mulberry Homes
CONTRACTOR Elan Tiling & Renovations

BRUCE MACKENZIE LANDSCAPE AWARD
HIGH COMMENDATION

PHOTOGRAPHER
Christopher Frederick Jones

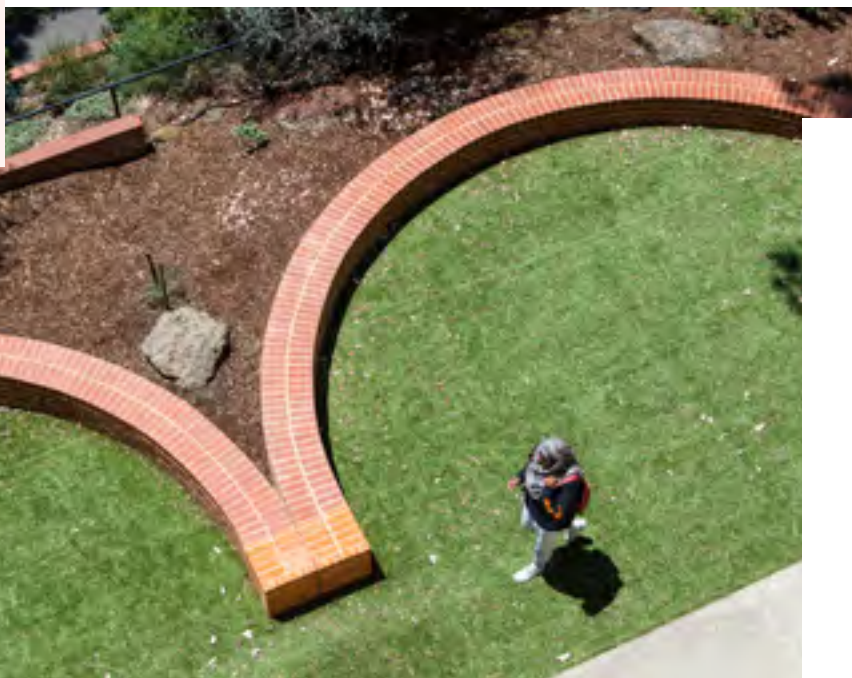


"Brick provides a clear message of balancing and defining thresholds within a building."

JURY
2019

JURY
2019

"A modest project that shows bricks capability and restraint. Fully realised, it encourages an outside learning space with interaction."



The University High School Northern Terrace by WOWOWA is positioned between the site's elevated original 1930s heritage-listed brick building and Storey Street, forming part of the school's historic gateway. Utilising a neglected part of the campus, a set of curved magnet-like forms shapes a series of outdoor learning and lounge spaces. The long, sunny and now very popular north-facing space is denoted by four curved, double-leaf retaining walls nestled within the landscape, made from Nubrik Pressed Bricks in Chapel Red.

The outdoor rooms double the existing terrace area while maintaining and enhancing the dense indigenous garden. The "magnet" ends are tipped with Austral Bricks Camilla bricks in Flame and have been dubbed the "lovers set." The scale of the curved forms allows them to be used as outdoor classrooms, or as more informal gathering spaces for students and parents at school pick-up and drop-off times. This small, modest landscape intervention has provided the school with a versatile, useful and playful learning environment. +

THINK BRICK
AWARDS
2019

UHS NORTHERN TERRACE WOWOWA



HIGH
COMMENDATION

MANUFACTURER Nubrik
BRICK COLLECTION Pressed Bricks
- Chapel Red / Austral Bricks: Camilla - Flame
BUILDER & CONTRACTOR
Azure Landscaping

— 3 9

BEHAN CAR PARK,
TRINITY COLLEGE
JOHN PATRICK
LANDSCAPE ARCHITECTS

This unique project by John Patrick Landscape Architects combines the practicalities of permeability with a trafficable paving system that was customised to blend into the heritage setting.

Adbri Masonry Turfgrid pavers were tinted to a sandstone colour to allow the product to match the sandstone façade of the 1930s heritage building. The colour change created a balance between form and function, providing a soft and subtle ground treatment to the car park and allowing the building to be the main focus.

Contrasting bands of Turfgrid pavers in Charcoal have been used to delineate the car parking bays without the need for additional line marking. The flexibility and customisation embraced by this project have resulted in an attractive landscape solution for the car park. +



NEW ENTRANT
2019

"Sensitive in terms of palette, permeability and texture. The materiality elevates the design to a public space."

JURY
2019

MANUFACTURER Adbri Masonry
MASONRY COLLECTION
Paving - Turfgrid **BUILDER** Trinity College
CONTRACTOR Adbri Masonry

HIGH

COMMENDATION

JURY
2019

"The complex, large-scale pattern modulates texture and interest on the ground plain."



MANDJAR SQUARE CITY OF MANDURAH

The deterioration of infrastructure at Mandjar Square in Mandurah, Western Australia, had elevated in recent years, resulting in the need for upgrade works. The replacement of the existing paving was a priority and made up a significant portion of the overall Mandjar Square redevelopment.

The original paving was insufficient for the vehicle access and event activity occurring in the space. The new paving needed to be functionally appropriate and designed to road standards. The large expanse of paving also provided an opportunity to embed locally specific character and a sense of place.

Pre-cast 300 x 200 x 70 mm concrete pavers from Urbanstone were laid in a 90-degree herringbone pattern. The surface pattern features three colour tones (light grey, mid-grey and dark grey) and three surface finishes (40% shot-blast, 40% milled and 20% honed). The design was documented paver by paver to translate a graphic artwork emulating water flow and movement, and the result is a variegated, free-flowing pattern. The organic pattern is non-directional and without geometry, which creates a sense of flow across the site, in complete contrast to the formal patterns and geometry of the previous paving design. At night, the honed pavers shine and shimmer as overhead lights reflect off the surfaces, further creating the impression of water and a sense of movement. +

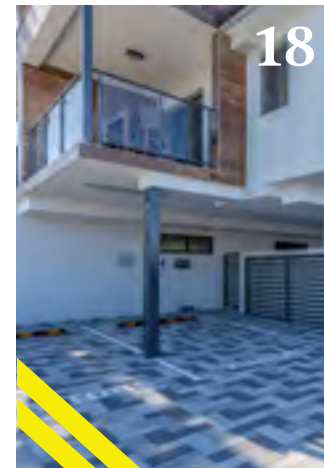
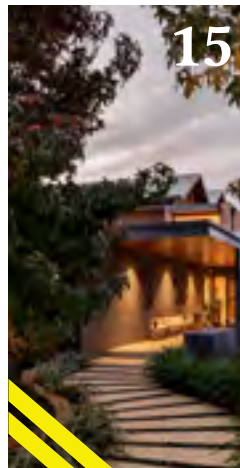
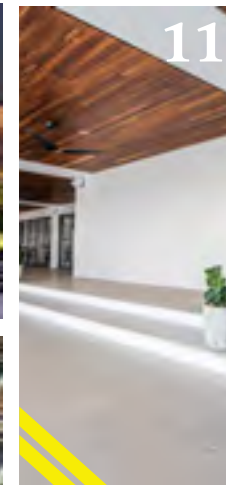
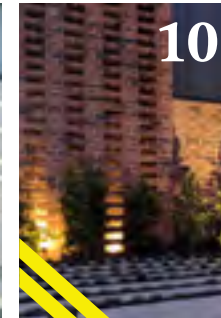
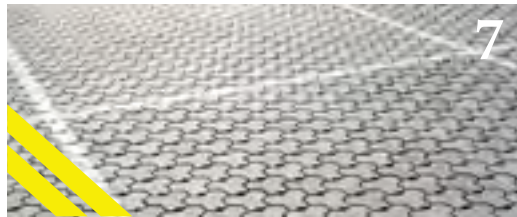
HIGH
COMMENDATION

MANUFACTURER Urbanstone **MASONRY COLLECTION** Engineered Series -
Casino Grey, Newington Grey, Blackpearl (Various finishes) **BUILDER** City of Mandurah
CONTRACTOR Alan Tormey Brickpaving and Earthmoving

NEW ENTRANT
2019

— 4 1

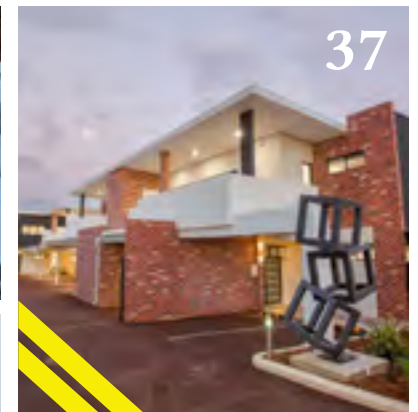
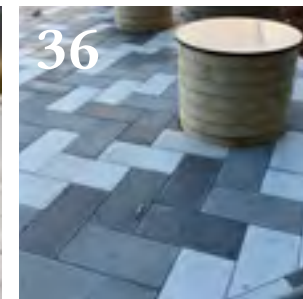
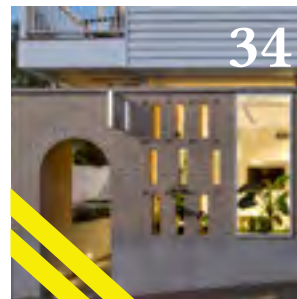
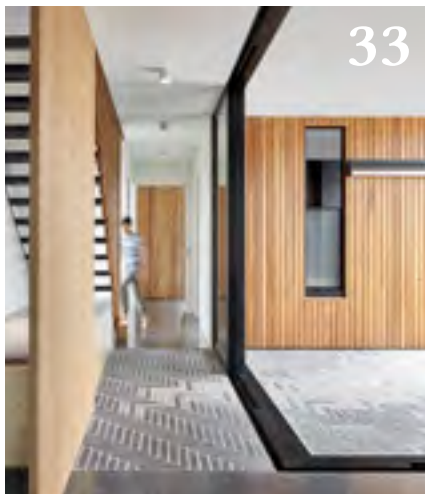
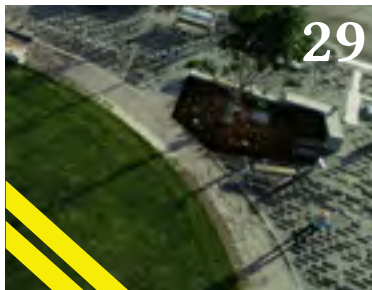
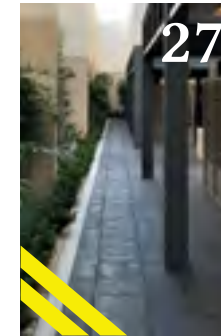
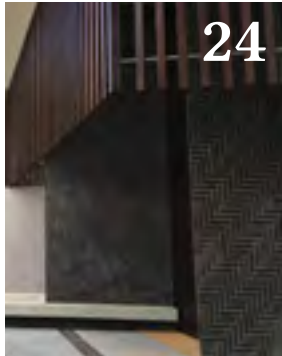
4 2 —



- 1 ANU Daley Rd
Harris Hobbs Landscapes
- 2 Mount Majura Estate
Redbox Design Group
- 3 Teneriffe House Vokes and Peters
- 4 Curtin Central Bus Interchange
Coniglio Ainsworth Architects
- 5 Epicure Residence
Kincaid Developments
- 6 ANU Union Court
Aspect Studios collab. with Lahznimmo Architects
- 7 Penguin Parade
Wood & Grieve Engineers
- 8 The Brook Community Pavilion, Byford
PLAN E Landscape Architects
- 9 Kent Town Revitalisation
Oxygen Architects
- 10 Heydon
ES Design
- 11 Townsville Casino
Woods Bagot
- 12 City Beach Residential College
Iredale Pedersen Hook Architects with CAPA
- 13 Seniors Living Penrith
Arterra Design - Landscape Architects
- 14 Australian Technology Park Public Domain
ASPECT Studios
- 15 Brigadoon Home
SHARP + VAN RHYN ARCHITECTS
- 16 Shepparton Law Court Redevelopment
Architectus
- 17 Roy Marten Park, Taperoo
Outerspace Landscape Architects
- 18 Aquire Apartments Zegna
- 19 Western Sydney Stadium
ASPECT Studios
- 20 Charles & Mollison Street Pocket Park
Hansen Partnership

21 Caulfield to
Dandenong Level
Crossing Removal
Project
ASPECT Studios
22 Boxhill Institute
Tectura Architects
23 Storybook House
Folk Architects
24 Circe Circle
Residence
Mountford Architects
25 West End Building
CKDS Architecture
26 Hampshire Rd,
Sunshine
ACLA Consultants
27 Club Marconi
Da Roit Designs
28 Lime Avenue
Residence Cumulus
Studio
29 Maroochydore City
Center
MC3 (Vee Design &
Tract collaborative)
30 Harold Park
JMD Design
31 Murray Rose Drive
Turf Design
32 Lidcombe Forensic
Court
Site Image Landscape
Architects
33 Dappled Courtyard
Melbourne Design
Studios
34 Doggett Street
Cavill Architects
35 Herford Street,
Botany
Pinnacle Plus
36 Walters Drive
Osborne Park
JCP Construction
37 Murray Rd, Palmyra
M Carbone Design
38 Freshwater Art
House
David Boyle Architect

BRUCE
MACKENZIE
LANDSCAPE
AWARD
ENTRANTS



4 4 —

KEVIN BORLAND MASONRY AWARD

The Concrete Masonry Association of Australia (CMAA) is the peak body that represents the concrete masonry manufacturers of Australia. This includes bricks, blocks, pavers and retaining walls.

The CMAA supports the concrete masonry industry by providing technical information and advice to architects, engineers, specifiers and educators.

The CMAA publishes technical manuals, data sheets and software packages relating to concrete block walling, concrete paving, permeable paving and concrete masonry retaining walls, which are free to download from the CMAA's website.

The Association also conducts workshop courses and provides a technical advisory service for masonry design queries.

HOUSE AT OTAGO BAY
TOPOLOGY STUDIO
PHOTOGRAPHER
Paul Hermes

CONCRETE
MASONRY
ASSOCIATION
OF AUSTRALIA

CMAA
CONCRETE MASONRY
ASSOCIATION OF AUSTRALIA

KEVIN BORLAND

MASONRY AWARD

THE KEVIN BORLAND
MASONRY AWARD
RECOGNISES PROJECTS
THAT HIGHLIGHT THE
DESIGN POTENTIAL OF
CONCRETE MASONRY
IN COMMERCIAL OR
RESIDENTIAL BUILT
ARCHITECTURE.

Kevin Borland (1926–2000) was an innovative architect, a generous patron of younger architects, and an inspiring and much-loved design studio teacher.

After beginning his architectural studies at the University of Melbourne in 1944, Borland deferred to serve in the West Pacific in World War II. On returning, he completed his studies and graduated with a Bachelor of Architecture in 1950.

After working at Mockridge Stahle & Mitchell's office, Borland, together with friends Peter McIntyre and John and Phyllis Murphy, won the national competition to design the Melbourne swimming and diving stadium for the 1956 Summer Olympics.

Together with his former student and friend Daryl Jackson, Borland completed the design and construction of the distinguished brutalist Harold Holt Memorial Swimming Centre (1968–1969 in Melbourne's Glen Iris).

During a time when peer awards were far less common than they are today, Borland's designs received numerous awards from state chapters of the Royal Australian Institute of Architects. His work made a significant contribution to the trajectory of Melbourne architecture. +

4 6

KEVIN BORLAND MASONRY AWARD WINNER

PHOTOGRAPHER
Paul Hermes



MANUFACTURER Adbri Masonry **MASONRY COLLECTION** Architectural Masonry -
Designer Masonry Shotblast **BUILDER** Cave Constructions **CONTRACTOR** RJ BECKER

"This project had a thorough understanding of the constraints and possibilities of masonry. It sits quietly in the landscape, incredibly resolved."

HOUSE AT OTAGO BAY TOPOLOGY STUDIO

On a lazy bend of the Derwent River, House at Otago Bay by Typology Studio accentuates the drama of living at the water's edge. Connections with the landscape oscillate between enclosure and embrace. A masonry courtyard, colonnade, ledges and terraces soften the distinction and encourage connections between the house and the landscape.

The building entry is deliberately solid, drawing you in along a curved masonry wall that follows the contours. The living space is perched high, drawing the water close. A ceiling sweeps up to reveal views of Mount Wellington to the west and Mount Direction to the east.

The lower-floor bedroom is embedded in the rock, the outlook sheltered as the ground falls away to the water. The west-facing masonry wall folds back from a pivot point to form a deep soffit lined with suspended masonry, and then wraps back into the site to form the terrace that, in time, will feel like a remnant of a previous structure. Deep masonry window reveals create privacy and form seats inside and out.

The site process involved numerous sample batches, prototype walls and experimentation with shot blasting techniques, and collaboration with the builder was key to achieving the desired outcome. Locally sourced masonry was custom-manufactured with a bespoke mix to complement the tones of the setting. Refined geometry and carefully selected materials have produced a home that is precise yet textured and warm. +

WINNER 2019

4 8 —

HIGH
COMMENDATION

EDSALL STREET
RITZ & GHOUGASSIAN

Conceptually, this project's framework seeks to articulate architecture as an enveloping medium, providing habitation to the user with an interiorised focus. Light and air are held in tension by architectural elements. Masonry walls stretch across the site, providing apertures to the garden and selected neighbouring views. The architecture acts as a mechanism to naturalise the externalities present in the street context and enhance the habitation from within. Heavy-set, strong masonry walls provide privacy to the neighbouring western and north-western commercial zones. The volume is light filled and well ventilated. The two opposing volumes of the "new" and "old" are separated by a pause. The old volume is a series of compartmentalised spaces, while the new one is the expression of a larger singular volume that appears to bleed out or dissolve into its surroundings. The ground plane falls away to the south, defining and segmenting the various living areas. Spaces expand and contract, sometimes pulling the landscape into view. +



KEVIN BORLAND MASONRY AWARD
HIGH COMMENDATION



"Using the material in a confident manner, this project is a bold gesture to the street. Uncompromising, the masonry contrasts well with other materials."

JURY
2019

PHOTOGRAPHER
Tom Blachford

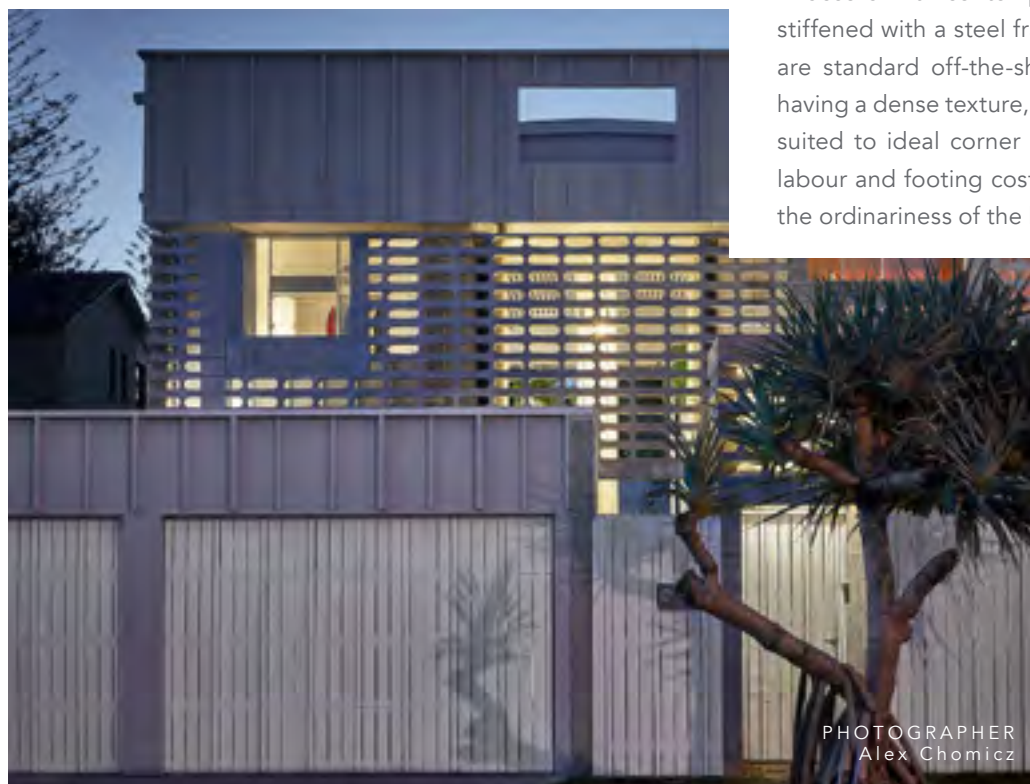
MANUFACTURER Austral Masonry
BRICK COLLECTION GB Smooth - Smooth Porcelain
BUILDER U Wood Projects
CONTRACTOR Hayden's Bricklaying

MERMAID MULTIHOUSE
PARTNERS HILL IN
ASSOCIATION WITH
HOGG & LAMB

Mermaid Multihouse is a duplex on a suburban lot that pushes the practicalities of the breezeblock wall. An entire façade is breeze porous, self-weathering, self-securing and light moderating. Additional to these ubiquitous capabilities, the breezeblocks form a wall in an almost Palladian sense; it is not merely a screen plane, but a fully composed old-fashioned villa front. It has palazzo-style openings – a porched front door, upper storied windows and an inverted cupola. The frontage incorporates belvedere, stylobate and quoined features. A lightweight parapet cost-effectively caps the walls and slides away to form the less apparent and comparatively mute side walls.

In accord with contemporary engineering standards, the blockwork is pinned and stiffened with a steel frame. The blocks are stacked in a “breeze” configuration, but are standard off-the-shelf construction “H” blocks, with the selected sub-variety having a dense texture, warmish grey colour and round fillets (a specific characteristic suited to ideal corner turning). Although materially prosaic, the front wall, due to labour and footing costs, is deployed as a character-giving fragment, in contrast to the ordinariness of the bulk of the building construction. +

NEW ENTRANT
2019



MANUFACTURER National Masonry **BRICK COLLECTION** Designer Block Range – Polished face - Alabaster, Natural Grey - H Block, Standard Grey - Half Block
BUILDER Concord Built **CONTRACTOR** All Brick & Block Bricklaying

JURY
2019

“An innovative use of material and geometry, the masonry screen transforms the building through day and night.”



HIGH
COMMENDATION

BONEO ROAD RESIDENCE
B.E ARCHITECTURE

In response to the client's brief, the Boneo Road Residence by B.E Architecture was designed as a single-level glass box that sits quietly in the surrounding country landscape, opening up to uninterrupted scenic views. The elongated form is sliced through and bound on both ends with thick brick blade walls. These brick walls continue through the building, dividing up the home into the main bedroom quarter, the living and entertainment area, and the guest quarters.

The decision to use brick was driven by the environment that the house was built in; the envelope material needed to be low-maintenance and durable and to patina over time. These considerations led to the selection of the Designer Block range of concrete bricks from National Masonry, rather than clay bricks. The bricks were custom laid with a slight offset in the vertical and horizontal plains to provide a more rustic, textured aesthetic for the exterior and interior walls. Given the simplicity of the material palette throughout the house, the architect's preference was to use a brick with a longer, thinner profile that was reminiscent of the building itself and would add another layer of sophistication and softness to the walls. +

MANUFACTURER National Masonry **BRICK COLLECTION**
Designer Block Range - Smooth face - Alabaster **BUILDER** Willowglen Homes
CONTRACTOR Andrew Ingles Bricklaying

KEVIN BORLAND MASONRY AWARD
HIGH COMMENDATIONPHOTOGRAPHER
Alex Reinders

"Masonry is the hero of the project and provides a surprising warmth through its laying techniques and mortar colour."

JURY
2019

PHOTOGRAPHER
Katherine Lu



JURY
2019

"Humble with a beautifully considered composition. This project approaches the basics of construction and is able to find delight and invention in them."

THINK BRICK
AWARDS
2019

NEW ENTRANT
AWARD
WINNER
2019

1 + 2 HOUSE
CURIOUS PRACTICE

1+2 House demonstrates material honesty and pragmatism, achieving an egalitarian space for its multigenerational inhabitants. The masonry block podium not only serves as a robust island, protecting the house from the high flood line, but it also creates a cave-like undercroft and protective entry courtyard. The blockwork responds to a prevailing pattern of defensive neighbouring architecture and embraces the stoic and elemental form of the block to assert a new standard of building in the area.

The deft arrangement of the heavy blocks relieves the material from a sense of its own gravity. With the garage open, the façade seems to teeter above the undercroft, an extension of the street that reaches deep into the site.

Playful experimentations with the archetypal block have produced an array of bespoke architectural elements, such as secret stairways, bond patterning, exterior light shades, down-pipe conduits, screening and the letterbox. From the scale of architectural form to that of detail, 1+2 House celebrates its masonry foundations as integral to the everyday understanding and use of the building. +



MANUFACTURER Austral Masonry **BRICK COLLECTION**
GB Smooth - Smooth Porcelain, Camino 50 - Sandune **BUILDER** Built by
Eli **CONTRACTOR** Virgili Bricklaying

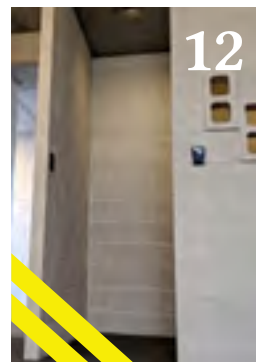
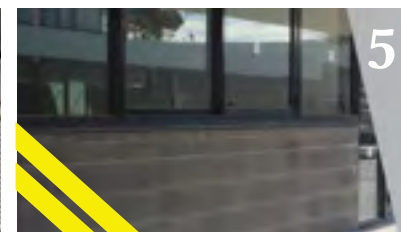
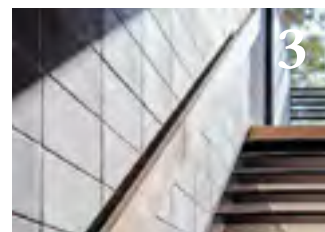
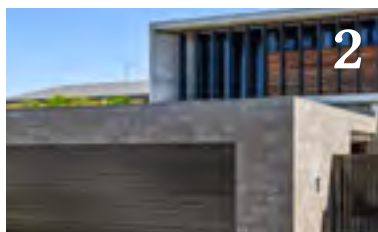
HIGH
COMMENDATION

— 5 1

KEVIN BORLAND MASONRY AWARD ENTRANTS

5 2

1 Edgars Creek High School Brand Architects
 2 Welby Street, Broadbeach Waters BDA Architecture
 3 Princes Street, Port Melbourne Lifting Merlo Homes
 4 First Avenue Vil Brickman Architects
 5 Sunshine College Patrick Architects
 6 Brown Street House Rod Pindar & Natalie Sciberras Architects
 7 William Ruthven Secondary College Kneeler Design Architects
 8 Kids Early Learning Centre, Eagleby Black Ink Architecture
 9 Olympic Park Pavilion JMA Architects
 10 Wickham House MODO Architecture
 11 Aveo Springfield Deicke Richards
 12 Brutalist Urban Greenwall Owner/Builder
 13 Covenant Christian School Belrose Sydney Bow Goold Architects
 14 The Osborne ITN Architects
 15 Dollhouse 2.0 JC Design Studio in association with Laura Chruscinski Architect
 16 Lakeside Drive HONED ARCHITECTURE + DESIGN
 17 Torquay House Eldridge Anderson Architects
 18 Mooloolah Drive, Minyama Grandview Homes
 19 Avanti Street, Mermaid Waters TJV Design
 20 Linden Gallery Upgrade Michael Taylor Architecture & Heritage





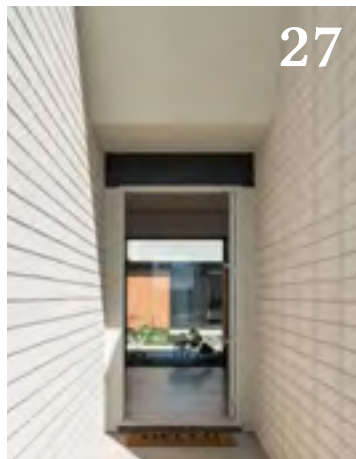
21



22



23



27



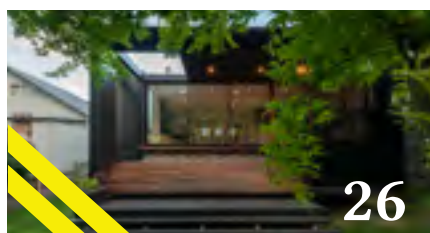
28



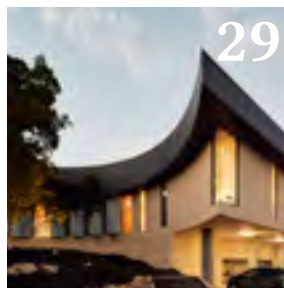
24



25



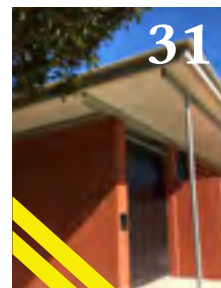
26



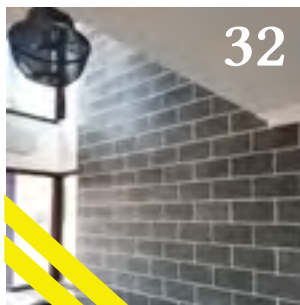
29



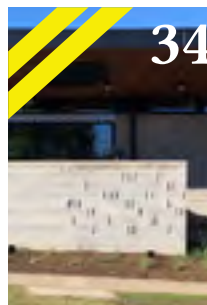
30



31



32



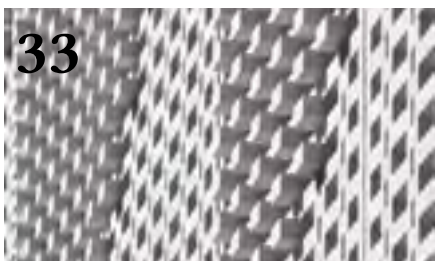
34



35



36



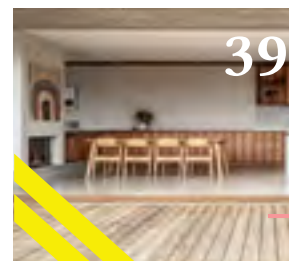
33



37



38



39

- 21 The Fawkner
KPDO
- 22 St. Kilda Football
Club Redevelopment
William Ross Architects
- 23 Coolbina - Display
Home
D4 Designs
- 24 The Palm Springs
Webb & Brown-Neaves
- 25 Epicure Residence
Kincaid Developments
- 26 Floodlight House
Crump Architects
- 27 Bernacki Residence
HONED ARCHITECTURE
+ DESIGN
- 28 The Barnhaus
Residential Attitudes
- 29 City Beach Residential
College Additions
Iredale Pedersen
Hook Architects
- 30 Tyabb Reserve
Extension
JMA Architects
- 31 UQ Amenities Building
Bud Brannigan Architects
- 32 Allora House
Leroy Palmer Consulting
Engineers
- 33 Newstead Series
bureau^proberts
- 34 Alexandra Police
Station
Six Degrees Architects
- 35 Senior Living Housing
Arterra Design -
Landscapes Architects
- 36 Mary St, Halls Head
John Lewis Architects
- 37 Hello Houses
Sibling Architecture
- 38 Brighton Brick House
Tecture Architecture and
Interior Design
- 39 Merewether House
Savio Parsons Architects

NEW ENTRANT

2019

53

5 4 —

AUSTRALIAN
ROOFING TILE
ASSOCIATION



Roof tiles redefine value and challenge the laws of design to transform a home into a timeless masterpiece. The Australian Roofing Tile Association strives to promote stylistic, sustainable roofing solutions that Australians nationwide can be proud of.

Our mission is to deliver the next generation in innovation and sponsor new artforms.

We seek to inspire through the power of natural, Australian products to generate homes that are infinitely more desirable, valuable and liveable.

We stand behind roof tiles not just for their design potential but for their commitment to impeccable quality, safety and protection. From their long-lifespans to eco-friendly manufacture, roof tiles offer numerous features and benefits that are invaluable to any enterprising homeowner.

Our growing commitment to promote the roofing tile industry, sees us provide apprenticeship opportunities for prospective tilers and convey issues on health and safety to both consumers and our members.

ARTA represents over 90% of the Australian Roofing Tile Industry.

SUBIACO HOUSE
VOKES AND PETERS
PHOTOGRAPHER
Christopher Frederick Jones

ROBIN DODS

ROOF TILE EXCELLENCE AWARD

SINCE THE INTRODUCTION OF THE ROOF TILE EXCELLENCE CATEGORY INTO THE AWARDS IN 2014, THE RESPONSE HAS BEEN EXCEPTIONALLY POSITIVE.

Many worthy past winners have pushed the envelope in innovative roof design using terracotta and concrete roof tiles in their residential or commercial building projects.

To further showcase the sustainability benefits, versatility and design possibilities of terracotta roof tiles, a new award category was introduced in 2016, named after renowned architect Robin S. Dods (1868-1920). Robin Dods believed in sustainable design to suit the climate, especially in roofing. His distinctive style of gabled roofs for domestic dwellings, which combined passive solar design while allowing for ventilation and insulation, became prevalent throughout Queensland in the early 1900s.

+

STORYBOOK HOUSE
FOLK ARCHITECTS

PHOTOGRAPHER
Tom Blachford

ROBIN DODS ROOF TILE EXCELLENCE AWARD WINNER

5 6 —

BUILDER Mulberry Homes
CONTRACTOR Carter Roofing and Slating

PHOTOGRAPHER
Christopher Frederick Jones

JURY
2019

"Spatially and geometrically nuanced. It showcases the elegance and complex forms of a roof tile when detailed correctly with care."



THINK BRICK
AWARDS
2019

SUBIACO HOUSE VOKES AND PETERS

Subiaco House is a new family home in the leafy suburb of Subiaco, Western Australia. The house occupies a prominent corner lot that had long been left a vacant lawn. The clients were keen to build a generous house that would allow them to engage with the community, and that was sensitive to the established character of the streetscape.

The design by Vokes and Peters fulfils this ambition by planning the new home around a courtyard garden that is positioned between the building and the street. The courtyard garden offers the amenity of private open space to the occupants, as well as maintaining a privacy buffer that allows the family to remain engaged with the street while also being able to withdraw to more private parts of the house. The courtyard enables the building to contribute open space, vegetation and human occupation to the street, along with a degree of visual permeability through the corner site.

Brick masonry walls have been used to form the garden walls and outdoor fireplace. These elements are painted white to offer a neutral backdrop to the surrounding vegetation and terracotta tile roofing. Inlaid brick flooring softens outdoor entertaining spaces and paths by introducing a hand-laid, tactile surface to the material palette. This flooring material is used both internally and externally, emphasising the continuity between enclosed and semi-enclosed living spaces. +

WINNER 2019

— 57

BRISBANE RIVERBANK HOUSE
OWEN ARCHITECTURE

This house beautifully embraces its Australian riverside bushland context. Two large courtyards have been created by placing a new living pavilion next to the existing 1930s brick and timber house. Earth-based materials – brick and terracotta – have been used in response to the earthy context of riverbank and overland flow gullies. The new work sits respectfully next to the original house while managing the sloping terrain.

The client asked for a home that would support living simply. The family values being together in a relaxed context and having family and friends visit often, so an important part of the plan diagram was to create a level lawn courtyard with direct access from the kitchen and living rooms, all of which overlook the river. +



"The roof forms part of an overall building palette in a relaxed and cohesive way. Horizontal linearity compliments the architectural language."

JURY
2019



PHOTOGRAPHER
Simon Devitt

MANUFACTURER Boral Roofing
ROOF TILE COLLECTION Shingle - Sydney Red
BUILDER Upside Constructions

STORYBOOK HOUSE FOLK ARCHITECTS

An extension to a single-fronted Victorian terrace located in Melbourne's inner-north, Storybook House by Folk Architects optimises the existing footprint to create a functional yet small family home with a series of multi-use spaces. The brief included many of the spatial requirements typical to Victorian period terrace house renovations: open-plan living areas, additional bedrooms and abundant natural light.

The building frames views into a series of open garden spaces, including internal courtyards and a roof garden. It also borrows landscape from the adjacent park and outlook to Melbourne's skyline, connecting the home to its local context and environment.

The material palette is neutral in tone and texture. White and cream terracotta tiles clad the external form to emphasise its formal qualities and reference the traditional pitched tile roof. The rows of tiles seamlessly follow the folds in the roof form, with the tiles mitred at the hip lines.

Sustainability is at the core of Storybook House. The architects have maximised natural light and air to all spaces. A need for air-conditioning is eliminated through active management of shade and passive ventilation. The white glazed terracotta tiles reflect light and drastically reduce urban heat sink and heat transfer internally. Storybook House demonstrates the versatility and potential for terracotta tiles to be used in new and innovative ways. +

JURY
2019

"The use of the material palette on a small refined space produces a tonal quality to this project."

HIGH
COMMENDATION

— 59



BUILDER Moon Building
CONTRACTOR Amalgamated Roofing

PHOTOGRAPHER
Tom Blachford

HARRINGTON GROVE TRADEMARK DESIGNS

NEW ENTRANT

2019

HIGH

COMMENDATION

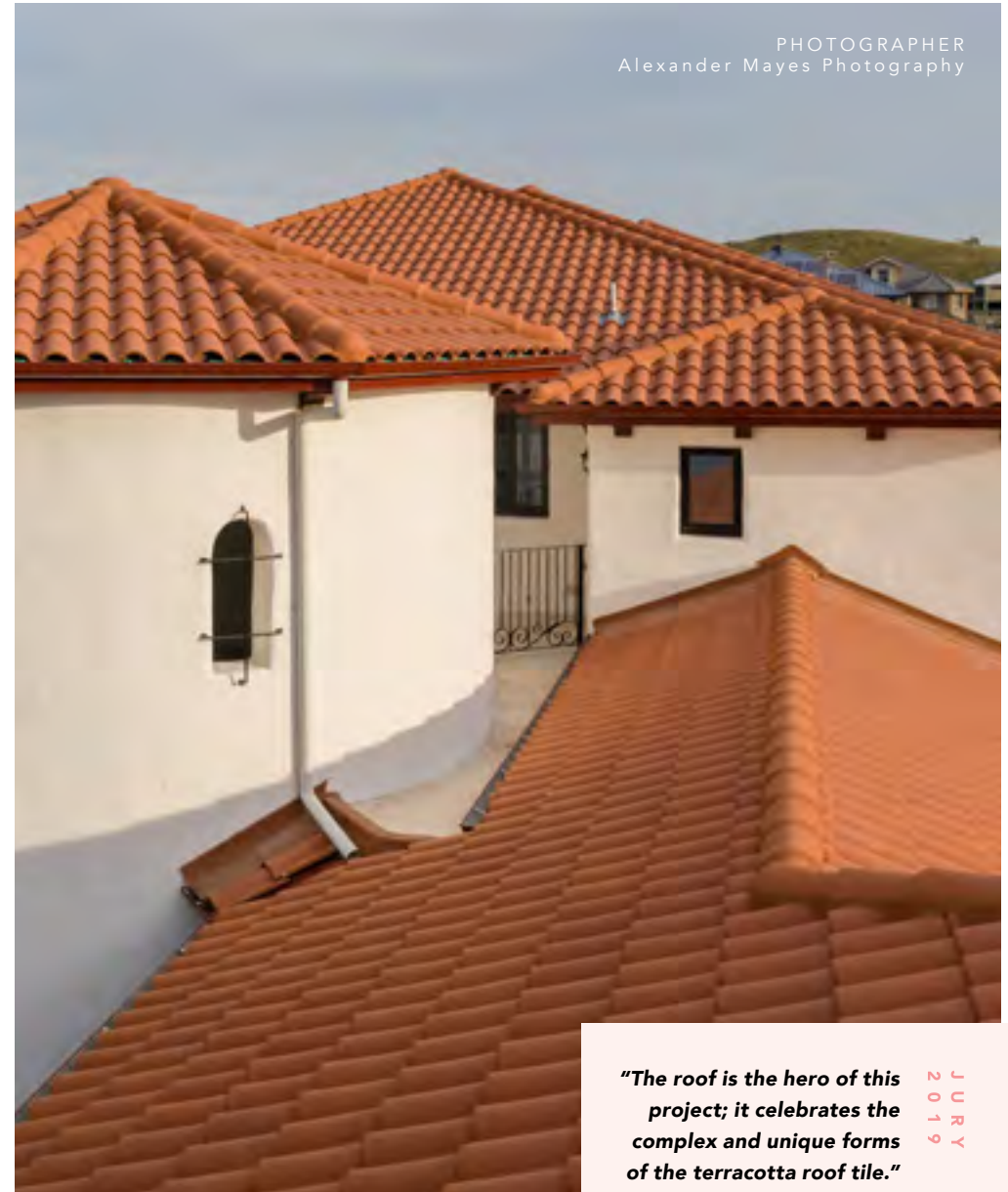
Trademark Designs was asked to design a large Mediterranean-style home – a task that required many hours of articulate design and careful thought. The clients expressed their passion regarding the emphasis on the shapes and curves needed to make up the exterior of the home and the special roof design that was needed to accompany that. The considered choice of internal and external materials was paramount to achieving the design brief.

The exterior barrister white walls feature a fine render detail, with all corners of the structure curved. A large arch and rectangular windows were installed, with curves continuing throughout the interior of the home. The turret tower at the front entry adds to the unique look. The design of the roof and the visual aspects of the roof tiles play a major role in the project. After extensive research with the clients, the designers chose Curvado Roja terracotta roof tiles from Bristle Roofing. The unique colour of the terracotta tile was the perfect choice for achieving the desired appearance. Not all clients are bold enough to select the colour red, but this roof design needed to stand out, and that has been accomplished. The project captures the essence of a Mediterranean home among a sea of grey concrete and metal roofs. +

MANUFACTURER Bristle Roofing **ROOF TILE COLLECTION**
Terracotta Roof Tiles - Curvado Roja **BUILDER** Owner/Builder
CONTRACTOR Berrigan and Associates

ROBIN DODS ROOF TILE EXCELLENCE AWARD
HIGH COMMENDATION

PHOTOGRAPHER
Alexander Mayes Photography



"The roof is the hero of this project; it celebrates the complex and unique forms of the terracotta roof tile."

JURY
2019

JURY
2019

*"This project celebrates
the materiality and the
tiler's craftsmanship
through its epic scale."*



PHOTOGRAPHER
Gary Peters Photography

Montgomery House by Montague Grant Architects is the remarkable result of the transformation of a group of derelict heritage buildings into a unique aged care residence in Mount Claremont, Western Australia. Formerly known as Swanbourne Hospital, the site has over 100 years of history, with the heritage buildings being the remnant core of the original Claremont Hospital for the Insane, constructed in 1904. Acquired by Aegis in 2012, this conservation and adaptation project has enhanced the very best of the original character with elegance and sympathy. New additions and landscaping have been sensitively integrated with the existing structures to create an outstanding outcome for this heritage site. +



MONTGOMERY HOUSE
MONTAGUE GRANT
ARCHITECTS

MANUFACTURER Bristle Roofing
ROOF TILE COLLECTION Swan Valley
Collection - Marseille Range Burnt Ochre
CONTRACTOR TDR Roofing

HIGH
COMMENDATION

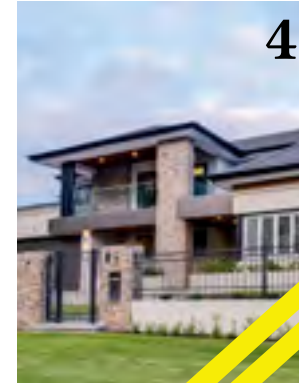
— 61

6 2

1 Classic Charm -
Getting a Modern
Barn Look
Front Porch Properties
2 Yacht Street
Reece Keil Design
3 Hamptons Beachside
Cape Cod
4 Fraser St Applecross
GRH Designs
5 Sandringham Classic
Terracotta
Peter Wright &
Associates
6 Bowral
Kathy Barnsley
Architect
7 University of WA
Albany Campus
City of Albany
8 Leading with the Hart
Hall & Hart
9 Atlas - Port
Macquarie
Pycon Homes
10 The Parkdale
Roke Design Studio
11 The South Hampton
Aspire Homes

NEW ENTRANT

2019



ROBIN DODS
ROOF TILE
EXCELLENCE
AWARD
ENTRANTS

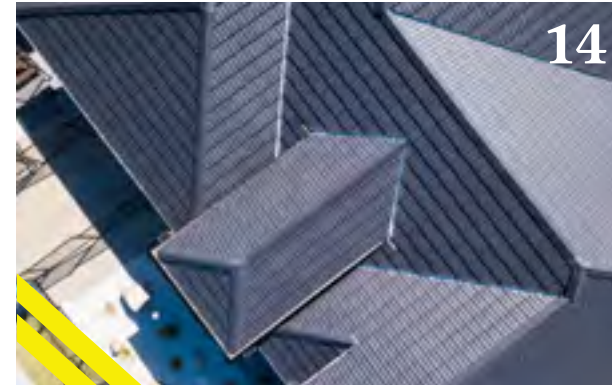
ROBIN DODS
ROOF TILE
EXCELLENCE
AWARD
ENTRANTS



12



13



14



15



16



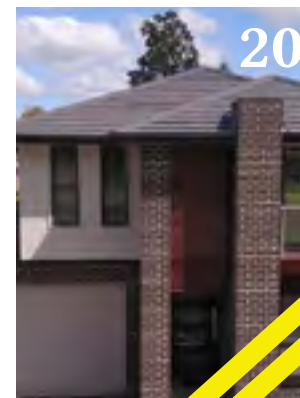
17



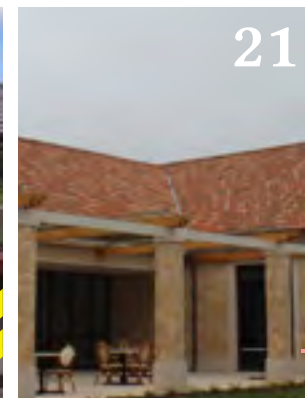
18



19



20



21



22

- 12 St Thomas More Chapel Re Roof
- 13 Roof Restoration Three Birds Renovation
- 14 Oracle Springfield Rise
- Oracle Platinum Homes
- 15 Building the Dream Hilstin
- 16 Hampton Islands Spectrum Homes
- 17 A Refreshing Idea Dreamroof
- 18 Classic Good Looks Marretta Design & Development
- 19 La Escandella Re-roof
- 20 Knock Down Rebuild Forever Home Rawson Homes
- 21 Hidden Valley Retirement Village Clubhouse
- Mcldowie Partners
- 22 Iconic Restoration Burnei
- KJ Evans Roofing

NEW ENTRANT
2019

63

6 4 —

NEW ENTRANT

2019



23



24



25



26



27

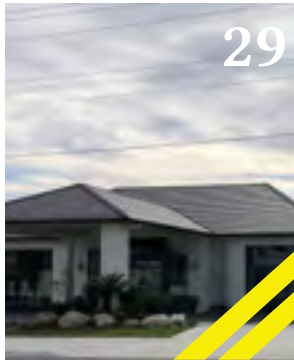


28

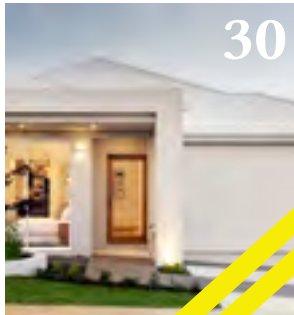
23 Oasis Noosa Springs
Paul Clout Design
24 Hadley 2nd
Floor Addition
Dymaxion Design
25 Moreing Rd
Attadale
Maughan Building
Company
26 City Beach 2
Mulvey Builders
27 The Casa
Webb & Brown-Neaves
28 Oracles Lincoln 39
Oracle Platinum Homes

ROBIN DODS
ROOF TILE
EXCELLENCE
AWARD
ENTRANTS

29 Arcare Templestowe
 - Age Care Facility
 Via Architects
 30 The Honolua Bay
 Go Homes
 31 Why Duplexes are
 a good investment
 Casaview Homes
 32 French Connection
 Luxe Home Design &
 Decor
 33 Salty Sandy Beach
 Perry Homes
 34 Dalkeith Residence
 R.M. Davey &
 Associates
 35 Perry St Hamilton
 C U Design
 36 Hamptons in the
 Hunter
 Dymaxion Designs
 37 Balinese On The Bay
 Denmack
 Developments
 38 Casa Dei Sogni
 - House of Dreams
 Downs Designer
 Homes
 39 Balmoral Hotel Re
 Roof
 Pro Roof Group
 40 Eastwest Roofing
 Locus Design Group
 41 Hamptons High On
 The Hill
 Owner/Builder
 42 Hinterland
 Tallebudgera
 Damon Newall
 Building



29



30



31



32



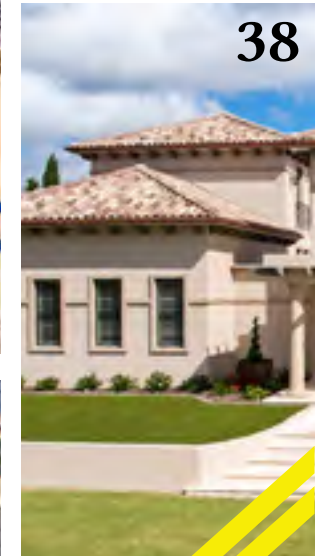
33



34



35



38



36



37



39



40



41



42

ROBIN DODS
 ROOF TILE
 EXCELLENCE
 AWARD
 ENTRANTS

NEW ENTRANT
 2019

— 6 5

6 6 —

NEW ENTRANT AWARD

IN 2018, THE THINK BRICK AWARDS EXPANDED WITH THE ADDITION OF A 'NEW ENTRANT AWARD' CATEGORY, that encouraged architectural firms to enter and be judged in a separate category if they had not entered before. This category is a great endorsement of the growing momentum of the Think Brick Awards. +



WINNER 2019

NEW ENTRANT AWARD

1 + 2 HOUSE

CURIOUS PRACTICE

PHOTOGRAPHER
Christopher Frederick Jones

KEVIN BORLAND MASONRY AWARD

MANUFACTURER Austral Masonry

BRICK COLLECTION GB Smooth

BUILDER Built by Eli

CONTRACTOR Virgili Bricklaying



BELLBIRD RETREAT
STEENDIJK

HORBURY HUNT RESIDENTIAL
AWARD **BUILDER** E.A. & P.J. Bell



PHOTOGRAPHER
Christopher Frederick Jones

HORBURY HUNT RESIDENTIAL AWARD
BUILDER Concord Built **MANUFACTURER** National
Masonry **CONTRACTOR** All Brick & Block Bricklaying

MERMAID
MULTIHOUSE
PARTNERS
HILL IN
ASSOCIATION
WITH HOGG &
LAMB



PHOTOGRAPHER
Alex Chomicz

DOUBLEGROUND
MUIR ARCHITECTURE
+ OPENWORK



PHOTOGRAPHER
Tom Blachford

BRUCE MACKENZIE LANDSCAPE
AWARD **MANUFACTURER**
Bowral Bricks **CONTRACTOR** Consultant/
Engineer: Iwinconsult, **Subcontractors:**
DGB Projects, Programmed, Show Works, Charles
Sandford and Higgins

THE IAN POTTER CENTRE
FOR PERFORMING ARTS
PETER ELLIOTT ARCHITECTURE
+ URBAN DESIGN

HORBURY HUNT COMMERCIAL
AWARD **MANUFACTURER**
Austral Bricks **BUILDER** Multiplex
CONTRACTOR Mulgrave Bricklaying
& Building Contractors / Byrne Construction
Systems



PHOTOGRAPHER
John Gollings

HIGH
6 7
COMMENDATIONS

19 Western Sydney Stadium ASPECT Studios
M: Adbri Masonry
P: Paving - Trihex, Ecotrihex, Trupave
C: Sam The Paving Man
20 Charles & Mollison Street Pocket Park Hansen Partnership
P: Recycled Brick
C: Planned Constructions
21 Caulfield to Dandenong Level Crossing Removal

Project ASPECT Studios
M: Austral Masonry
P: Hamlet - Ash, Blue, Sepia
C: Civilex & Landscape Plus
22 Boxhill Institute Tectura Architects
M: Adbri Masonry
P: Retaining Wall - AB Aussie Vertical
C: Adbri Masonry Contracting
23 Storybook House Folk Architects
M: Bowral Bricks

P: Bowral Dry Pressed - Chillingham White
C: Haydens Bricklaying
24 Circe Circle Residence Mountford Architects
M: Bowral Bricks
P: Bowral Dry Pressed - Bowral Blue
25 West End Building CKDS Architecture
M: Adbri Masonry
P: Paving - Euro

Classic
26 Hampshire Rd, Sunshine ACLA Consultants
M: Adbri Masonry
P: Paving - Trihex
C: North To South Landscapes
27 Club Marconi Da Roit Designs
M: Adbri Masonry
P: Paving - Euro Classic
C: C Maxx Tiling & Stone
28 Lime Avenue Residence Cumulus

Studio
M: Austral Bricks
P: Symmetry - Red
C: Vander Velde Bricklaying
29 Maroochydore City Centre MC3 (Vee Design & Tract collaborative)
P: Engineered Series - Maroochydore - Milled Finish
M: Urbanstone
C: Eureka Landscapes
30 Harold Park

JMD Design
M: Recycled
P: Recycled Brick
C: Mansour Paving
31 Murray Rose Drive Turf Design
M: Adbri Masonry
P: Paving - Trihex & Brickpave
C: Regal Innovations
32 Lidcombe Forensic Court Site Image Landscape Architects
M: Adbri Masonry
P: Paving - Euro Classic
C: AYZ Landscapes

33 Dappled Courtyard Melbourne Design Studios
M: Austral Bricks
P: La Paloma - Dali, Gaudi Miro
C: Homestead Bricklaying
34 Doggett Street Cavill Architects
M: Bowral Bricks
P: Bowral Dry Pressed - St Pauls Cream
C: La Spina, Trabucco & Co.

35 Herford Street, Botany Pinnacle Plus
M: Adbri Masonry
P: Paving - Trihex & Ecotrihex
C: The Sydney Brick Paving Company
36 Walters Drive Osborne Park JCP Construction
M: Brikmakers
P: Custom Paving Range - Custom Paving Colour, Custombrik Range - Custom Brick Colour

C: Bellaluca Construction and Stone
37 Murray Rd, Palmyra M Carbone Design
M: Brikmakers
P: Traditional Brick Collection - Vintage Red Tumbled
C: InBrick
38 Freshwater Art House David Boyle Architect
P: Recycled Brick
C: Pasquale Cavallaro Bricklaying

KEVIN BORLAND MASONRY AWARD ENTRANTS INDEX

1 Edgars Creek High School Brand Architects
M: Adbri Masonry
P: Architectural Masonry - Architectural Brick
C: Spiden Bricklaying
2 Welby Street, Broadbeach Waters BDA Architecture
M: National Masonry
P: Designer Block Range - Polished face - Charcoal
C: Greenroom Building Company
3 Princes Street, Port Melbourne Lifting Merlo Homes
M: Austral Masonry
P: GB Honed - Honed Pewter
C: Lifting Merlo Homes

4 First Avenue Vil Brickman Architects
M: Austral Masonry
P: Solitary Smooth - Smooth Ash
C: Hunt & Moore Bricklayers
5 Sunshine College Patrick Architects
M: National Masonry
P: Honed face - Alabaster & Pearl, Smooth face - Charcoal & Alabaster
C: Stuart Dent Bricklaying
6 Brown Street House Rod Pindar & Natalie Sciberras Architects
M: Adbri Masonry
P: Architectural Masonry - Architectural Brick
C: JDC Masonry

7 William Ruthven Secondary College Kneeler Design Architects
M: National Masonry
P: Designer Block Range - Honed face - Pearl Grey & Split face Face - Pearl Grey
C: Matt Dummett Bricklaying
8 Kids Early Learning Centre, Eagleby Black Ink Architecture
M: National Masonry
P: ULTRA BRICK - Honed face & Smooth face - Coco
C: TFA Constructions
9 Olympic Park Pavilion JMA Architects
M: National Masonry
P: Designer Block

Range - Honed Face - Almond & Smooth Face - Charcoal
C: Dummett Bricklaying
10 Wickham House MODO Architecture
M: Adbri Masonry
P: Architectural Masonry - Architectural Brick / Southern Smooth - Titanium
C: Justin Gee Building and Construction
11 Aveo Springfield Deicke Richards
M: National Masonry
P: Designer Block Range - Split Face - Alabaster
C: Brisbane Brick & Block
12 Brutalist Urban Greenwall Owner/Builder

C: Brendan Cox Blocklaying
13 Covenant Christian School Belrose Sydney Bow Goold Architects
M: Baines Masonry
P: Honed Block - Opal White
C: Reitsma Constructions
14 The Osborne ITN Architects
M: Boral Masonry
P: 200mm Series Blocks - Natural
C: Brian Andrew Master Builders
15 Dollhouse 2.0 JC Design Studio in association with Laura Chruscinski Architect
16 Lakeside Drive HONED ARCHITECTURE + DESIGN
M: Adbri Masonry
P: Architectural Masonry -

Architectural Brick
C: McKinnell Bricklaying
17 Torquay House Eldridge Anderson Architects
M: National Masonry
P: Designer Block Range - Honed face - Pearl Grey
18 Mooloolah Drive, Minyama Grandview Homes
M: National Masonry
P: Designed Block Range - Polished face - Charcoal
C: Grandview Homes
19 Avanti Street, Mermaid Waters TJV Design
M: National Masonry
P: Designer Block Range - Polished

face - Charcoal
C: Wave Developments
20 Linden Gallery Upgrade Michael Taylor Architecture & Heritage
M: National Masonry
P: Designer Block Range - Polished face - Alabaster & Honed face - Alabaster
C: Diamond Valley Bricklaying
21 The Fawknor KPDO
M: Adbri Masonry
P: Architectural Masonry - Architectural Brick
C: Mulgrave Bricklaying & Building Contractors
22 St. Kilda Football Club Redevelopment William Ross Architects
M: Austral Masonry

P: G B Honed Porcelain & Pewter
C: DT Commercial
23 Coolbina - Display Home D4 Designs
M: Austral Masonry
P: GB Smooth - Porcelain
C: Q Group
24 The Palm Springs Webb & Brown-Neaves
M: Austral Masonry
P: Breeze Blocks - Wedge - Porcelain, GB Honed - Honed Porcelain
C: Daniel Scarterfield Bricklaying
25 Epicure Residence Kincaid Developments
M: Adbri Masonry
P: Architectural Masonry - Architectural Brick
C: Montevue Developments
26 Floodlight House

Crump Architects
M: Adbri Masonry
P: Architectural Masonry - Rumbled Brick Series
C: Keystone Masonry
27 Bernacki Residence HONED ARCHITECTURE + DESIGN
M: Adbri Masonry
P: Architectural Masonry - Designer Masonry Shotblast
C: Greg Longmore Bricklaying
28 The Barnhaus Residential Attitudes
M: Brikmakers
P: Masonry Blocks - 100mm Wide Series 10.01 & 10.83
C: Simon Jolliffe Bricklaying

KEVIN BORLAND MASONRY AWARD ENTRANTS INDEX CONTINUED

M: MANUFACTURER P: PRODUCT C: CONTRACTOR

29 City Beach
Residential College
Additions Iredale
Pedersen Hook
Architects
M: Austral Masonry
P: GB Smooth -
Limestone
C: Tyrone Group
30 Tyabb Reserve
Extension JMA

Architects
M: National
Masonry
P: Designer Block
Range - Honed Face
- Charcoal
C: Mordialloc Brick
and Block Laying
31 UQ Amenities
Building Bud Brannigan
Architects

M: National
Masonry
P: Designer Block
Range - Smooth
Face Terracotta
C: MBrick Brick and
Block Laying
32 Allora House Leroy
Palmer Consulting
Engineers
M: National

Masonry
P: Designer Block
Range - Polished
Face - Charcoal
C: Darlymple
Landscape Haulage
33 Newstead Series
bureau^proberts
M: Austral Masonry
P: Gb Honed -
Porcelain

34 Alexandra Police
Station Six Degrees
Architects
M: Austral Masonry
P: Grey Block -
Smooth Grey
C: Hedger
Constructions
35 Senior Living
Housing Arterra Design
- Landscapes Architects

M: Adbri Masonry
P: Architectural
Masonry - Designer
Masonry Honed
C: Northwest
Masonry
36 Mary St, Halls Head
John Lewis Architects
C: Mal Tapper
Builder

37 Hello Houses
Sibling Architecture
M: Austral Masonry
P: GB Honed -
Honed Pewter
& Porcelain, GB
Smooth - Pewter &
Porcelain
38 Brighton Brick
House Texture
Architecture and

Interior Design
P: Melbourne
Bricks - Grey Brick
C: Andrew Trainor
Bricklaying
39 Merewether
House Savio Parsons
Architects
M: Austral Masonry
P: GB Smooth -
Smooth Porcelain

ROBIN DODS ROOF TILE EXCELLENCE AWARD ENTRANTS INDEX

1 Classic Charm -
Getting a Modern
Barn Look Front Porch
Properties
M: Monier Roofing
P: Cambridge -
Soho Night
C: Monier Roofing
2 Yacht Street Reece
Keil Design
M: Bristle Roofing
P: Terracotta Roof
Tiles - Curvado
Tossal
3 Hamptons Beachside
Cape Cod
M: Monier Roofing
P: Nullarbor - Peak
C: Monier Roofing
4 Fraser St Applecross
GRH Designs
M: Monier Prime
P: Concrete Horizon
- Barramundi
C: GEN Roofing
5 Sandringham Classic
Terracotta Peter Wright
& Associates
M: Bristle Roofing
P: Terracotta Roof
Tiles - Marseille Roja
6 Bowral Kathy

Barnsley Architect
M: Bristle Roofing
P: Terracotta Roof
Tiles - Planum Slate
C: A. T. Roofing
7 University of WA
Albany Campus City of
Albany
M: Boral Roofing
P: Shingle - Asphalt
C: Programmed
8 Leading with the
Hart Hall & Hart
M: Monier Roofing
P: Atura -
Barramundi
C: Monier Roofing
9 Atlas - Port
Macquarie Pycon
Homes
M: Bristle Roofing
P: Concrete Roof
Tiles - Prestige
Smooth Radium
C: Bristle Roofing
10 The Parkdale Roke
Design Studio
M: Boral Roofing
P: Shingle -
Bluestone
C: Roofing To
Perfection

11 The South
Hampton Aspire
Homes
M: Boral Roofing
P: Wave - Basalt
C: Boral Roofing
12 St Thomas More
Chapel Re Roof
M: Bristle Roofing
P: Swan Valley
Collection - Vienna
Range Cocoa
C: TDR Roofing
13 Roof Restoration
Three Birds Renovation
M: Monier Roofing
P: Horizon -
Barramundi
C: Monier Roofing
14 Oracle Springfield
Rise Oracle Platinum
Homes
M: Bristle Roofing
P: Innova Range -
Slate
C: BST Roofing
15 Building the Dream
Hilstin
M: Monier Roofing
P: Madison - Soho
Night
16 Hampton Islands

Spectrum Homes
M: Bristle Roofing
P: Concrete Roof
Tiles - Prestige
Smooth Mercury
C: Allens Roofing
17 A Refreshing Idea
Dreamroof
M: Monier Roofing
P: Nullarbor - Peak
C: Dreamroof
18 Classic Good Looks
Marretta Design &
Development
M: Monier Roofing
P: Atura -
Barramundi
C: Monier Roofing
19 La Escandella
Re-roof
M: Bristle Roofing
P: Terracotta Roof
Tiles - Curvado
Galia
C: Canterbury Roof
Tiles
20 Knock Down
Rebuild Forever Home
Rawson Homes
M: Monier Roofing
P: Horizon -
Barramundi

21 Hidden Valley
Retirement Village
Clubhouse McIldowie
Partners
M: Bristle Roofing
P: Terracotta Roof
Tiles - Curvado
Galia
C: Johnson Roofing
22 Iconic Restoration
Burne: KJ Evans
Roofing
M: Monier Roofing
P: Marseille - Aurora
C: KJ Evans Roofing
23 Oasis Noosa
Springs Paul Clout
Design
M: Bristle Roofing
P: Terracotta Roof
Tiles - Curvado
Milenum
C: First Point
Roofing
24 Hadley 2nd Floor
Addition Dymaxion
Design
M: Boral Roofing
P: Contour -
Charcoal Grey
C: Danny Smith
Professional
Building Services

25 Moreing Rd
Attadale Maughan
Building Company
M: Monier Prime
P: Terracotta
Nullarbor - Peak
C: Mason Roofing
26 City Beach 2
Mulvay Builders
M: Monier Prime
P: Terracotta
Nullarbor - Peak
C: Monier Prime
27 The Casa Webb &
Brown-Neaves
M: Bristle Roofing
P: Terracotta Roof
Tiles - Curvado
Galia
C: TDR Roofing
28 Oracles Lincoln 39
Oracle Platinum Homes
M: Bristle Roofing
P: Terracotta Roof
Tiles - Planum Slate
C: BST Roofing
29 Arcare
Templestowe - Age
Care Facility Via
Architects
M: Boral Roofing
P: Artline - Eclipse

C: Vickers Roofing
30 The Honolulu Bay
Go Homes
M: Harmony Roof
Tiles
P: Contemporary
Shingles - Frost
C: Winchester Roof
Tiling
31 Why Duplexes are
a good investment
Casaview Homes
M: Monier Roofing
P: Atura - Sambuca
C: Monier Roofing
32 French Connection
Luxe Home Design &
Decor
M: Monier Roofing
P: Nullarbor - Titan
C: Monier Roofing
33 Salty Sandy Beach
Perry Homes
M: Monier Roofing
P: Cambridge - Salt
Spray (Boutique
Collection)
C: Monier Roofing
34 Dalkeith Residence
R.M. Davey &
Associates
M: Harmony Roof

Tiles
P: Contemporary
Shingles - Stellar
C: Winchester
Roofing
35 Perry St Hamilton C
U Design
M: Bristle Roofing
P: Terracotta Roof
Tiles - La Escandella
Innova Slate
C: Imperial
36 Hamptons in the
Hunter Dymaxion
Designs
M: Monier Roofing
P: Nullarbor - Peak
C: Monier Roofing
37 Balinese On
The Bay Denmack
Developments
M: Monier Roofing
P: Nullarbor - Peak
C: Monier Roofing
38 Casa Dei Sogni
- House of Dreams
Downs Designer
Homes
M: Bristle Roofing
P: Terracotta Roof
Tiles - Curvado
Aitana

C: Ryan Battersby
39 Balmoral Hotel Re
Roof Pro Roof Group
M: Monier Prime
P: Terracotta
Marseille - Earth
C: Pro Roof Group
40 Eastwest Roofing
Locus Design Group
M: Bristle Roofing
P: Terracotta Roof
Tiles - Visum Slate
C: East West
Roofing
41 Hamptons High On
The Hill Owner/Builder
M: Monier Roofing
P: Madison - Soho
Night
C: Monier Roofing
42 Hinterland
Tallebudgera Damon
Newall Building
M: Bristle Roofing
P: Terracotta Roof
Tiles - Planum
Caviar
C: Brett Sullivan

7 0 —



SPONSORING MEMBERS



Adbri Masonry
adbri-masonry.com.au



Austral Masonry
australmasonry.com.au

STATE MEMBERS



Brikmakers
brikmakers.com



Boral Masonry
boral.com.au



National Masonry
nationalmasonry.com.au

GENERAL MEMBERS



Baines Masonry
bainesmasonry.com.au



BCP Building Products
bcpbuildingproducts.com.au



Cowra Concrete Products
cowraconcreteproducts.com.au



Island Block and Paving
islandblock.com.au



Urban Stone
urbanstonecentral.com.au

ASSOCIATES



Besser
besser.com



Bliss & Reels
blissandreels.com.au



BlockAid
blockaid.com.au



Cathay Industries
cathayindustries.com.au



Columbia Concrete Block Machine
columbiemachine.com



GuardIT Solutions
guarditsolutions.com.au



Lanxess
lanxess.com.au



safeTEC Solutions
safetecsolutions.com.au



NATIONAL MEMBERS



Boral Roofing
boral.com.au



Bristile Roofing
bristilerroofing.com.au



Monier
monier.com.au

STATE MEMBERS



Alice Roof Tiles
alicerootiles.com.au



Harmony Roof Tiles
harmonyrooftiles.com.au



Monier Prime
monierprime.com.au

THINK BRICK AUSTRALIA

NATIONAL MEMBERS



Austral Bricks
australbricks.com.au



PGH Bricks & Pavers™
pghbricks.com.au

STATE MEMBER



Brikmakers
brikmakers.com



A **BORAL** COMPANY

Midland Brick
midlandbrick.com.au

REGIONAL MEMBERS



BOWRAL BRICKS

Bowral Bricks
bowralbricks.com.au



Daniel Robertson Australia
danielrobertson.com.au



Geraldton Bricks
geraldtonbrick.com.au



Krause Bricks
krausebricks.com.au

NAMOI VALLEY BRICKS

Namoi Valley Bricks
nvbricks.com.au

ASSOCIATE MEMBERS



Ancon
ancon.com.au



GuardIT Solutions
guarditsolutions.com.au

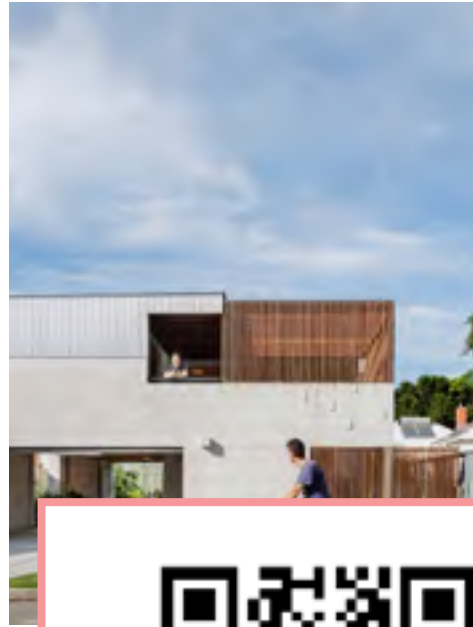


safeTEC Solutions
safetecolutions.com.au

INTERNATIONAL AFFILIATE



Masonry Institute of America
masonryinstitute.org



SCAN THE QR CODE
TO VIEW ALL THE
THINK BRICK AWARDS
ENTRIES ONLINE.
THINKBRICK.COM.AU



THINK BRICK
AUSTRALIA

CMAA
CONCRETE MASONRY
ASSOCIATION OF AUSTRALIA

ARTA
AUSTRALIAN ROOFING TILE ASSOCIATION

THINK
BRICK
AWARDS
2019

